

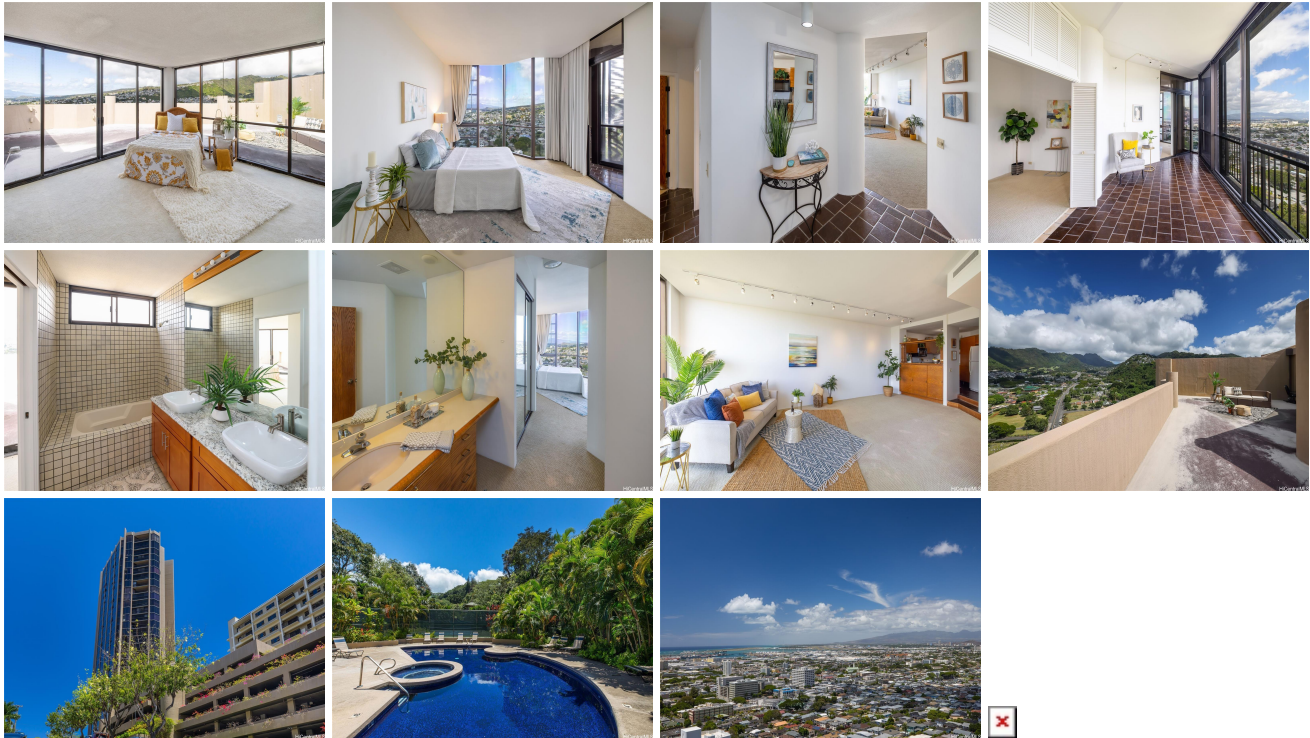
Craigside 2101 Nuuanu Avenue Unit PHA5, Honolulu 96817 * Craigside * \$525,000

Beds: 2	MLS#: 202414394, LH	Year Built: 1981
Bath: 2/0	Status: Active	Remodeled:
Living Sq. Ft.: 2,567	List Date & DOM: 06-19-2024 & 11	Total Parking: 2
Land Sq. Ft.: 158,210	Condition: Average	Assessed Value
Lanai Sq. Ft.: 0	Frontage: Other	Building: \$1,157,900
Sq. Ft. Other: 0	Tax/Year: \$570/2023	Land: \$90,800
Total Sq. Ft. 2,567	Neighborhood: Nuuanu-lower	Total: \$1,248,700
Maint./Assoc. \$411 / \$612	Flood Zone : Zone X - Tool	Stories / CPR: 21+ / No
Assigned, Covered - 2, Garage,		
Parking: Guest, Open - 3+, Secured Entry, Street, Tandem		Frontage: Other

Zoning: 13 - A-3 High Density Apartment

View: Coastline, Mountain, Ocean, Sunset

Public Remarks: PRICE REDUCED RARE CHANCE to live the Penthouse Life at Craigside in Nuuanu Downtown. Expansive 2 bedroom, 3 bath with 2 secured and covered parking. Appraised at \$686,000 in 2021. Spectacular Panoramic Views from Oahu Country Club up The Pali to the Waianae Coast. This 2,500 Plus sq. ft. condo with 10- foot floor to ceiling windows and a massive 600 Plus sq. ft. lanai to sun, cocktail and entertain is one of the largest condo units on the market this close to town. Enjoy the luxury living of amenities that Craigside offers with Heated Pool, Patio?Deck, BBQs, Sauna, Whirlpool Pool Spa, Tennis Courts, New Fitness Center and plenty of parking for you guests. Minutes to Chinatown, Bishop Street, Kakaako, Honolulu International Airport, Medical Facilities, Beaches, Shopping, Hawaii Theater, Ala Moana Center, Honolulu Academy of Arts, Foster Botanical Gardens, Hiking Trails more **Sale Conditions:** None **Schools:** , , * [Request Showing](#), [Photos](#), [History](#), [Maps](#), [Deed](#), [Watch List](#), [Tax Info](#)



Address	Price	Bd & Bth	Living / Avg.	Land Avg.	Lanai	Occ.	FL	DOM
2101 Nuuanu Avenue PHA5	\$525,000 LH	2 & 2/0	2,567 \$205	158,210 \$3	0	72%	26	11

Address	Tax Maint. Ass.	Assessed Land	Assessed Building	Assessed Total	Ratio	Year & Remodeled
2101 Nuuanu Avenue PHA5	\$570 \$411 \$612	\$90,800	\$1,157,900	\$1,248,700	42%	1981 & NA

2101 Nuuanu Avenue PHA5 - MLS#: **202414394** - PRICE REDUCED RARE CHANCE to live the Penthouse Life at Craigside in Nuuanu Downtown. Expansive 2 bedroom, 3 bath with 2 secured and covered parking. Appraised at \$686,000 in 2021. Spectacular Panoramic Views from Oahu Country Club up The Pali to the Waianae Coast. This 2,500 Plus sq. ft. condo with 10- foot floor to ceiling windows and a massive 600 Plus sq. ft. lanai to sun, cocktail and entertain is one of the largest condo units on the market this close to town. Enjoy the luxury living of amenities that Craigside offers with Heated Pool, Patio?Deck, BBQs, Sauna, Whirlpool Pool Spa, Tennis Courts, New Fitness Center and plenty of parking for you guests. Minutes to Chinatown, Bishop Street, Kakaako, Honolulu International Airport, Medical Facilities, Beaches, Shopping, Hawaii Theater, Ala Moana Center, Honolulu Academy of Arts, Foster Botanical Gardens, Hiking Trails more **Region:** Metro **Neighborhood:** Nuuanu-lower **Condition:** Average **Parking:** Assigned, Covered - 2, Garage, Guest, Open - 3+, Secured Entry, Street, Tandem **Total Parking:** 2 **View:** Coastline, Mountain, Ocean, Sunset **Frontage:** Other **Pool:** **Zoning:** 13 - A-3 High Density Apartment **Sale Conditions:** None **Schools:** , , * [Request Showing](#), [Photos](#), [History](#), [Maps](#), [Deed](#), [Watch List](#), [Tax Info](#)

DOM = Days on Market, Occ. = Occupancy, FL = Floor Number