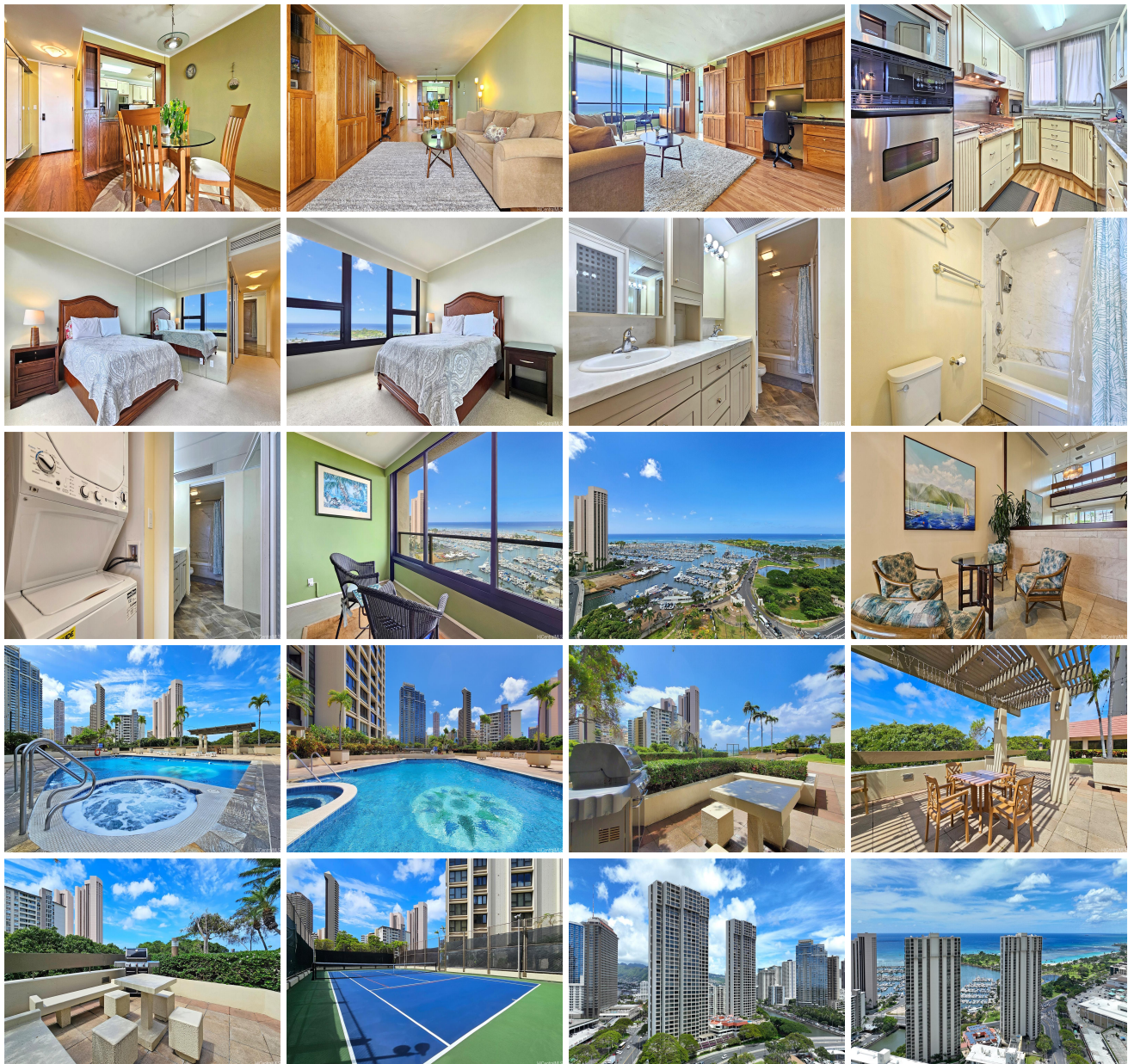


Yacht Harbor Towers 1600 Ala Moana Boulevard Unit 2010, Honolulu 96815 * \$728,000

Beds: 1	MLS#: 202414399, FS	Year Built: 1973
Bath: 1/0	Status: Active	Remodeled:
Living Sq. Ft.: 930	List Date & DOM: 06-17-2024 & 12	Total Parking: 1
Land Sq. Ft.: 138,216	Condition: Above Average	Assessed Value
Lanai Sq. Ft.: 122	Frontage:	Building: \$672,600
Sq. Ft. Other: 0	Tax/Year: \$216/2024	Land: \$46,800
Total Sq. Ft. 1,052	Neighborhood: Ala Moana	Total: \$719,400
Maint./Assoc. \$1,431 / \$0	Flood Zone : Zone AE - Tool	Stories / CPR: 21+ / No
Parking: Assigned, Covered - 1	Frontage:	
Zoning : 12 - A-2 Medium Density Apartme	View: Ocean, Other	

Public Remarks: Enjoy the unobstructed ocean view from well maintained 1 bedroom, 1 bath unit with 1 covered parking stall. Washer/dry in unit. Conveniently located at the entrance to Waikiki, close to Ala Moana Beach Park, Magic Island and Ala Moana Shopping Center. Steps away from shopping, dining, and entertainment. Maintenance fee \$1083.63/month, reserved fund contribution \$347.62/month. Property is sold "AS IS". **Sale Conditions:** None **Schools:** , , * [Request Showing](#), [Photos](#), [History](#), [Maps](#), [Deed](#), [Watch List](#), [Tax Info](#)



Address	Price	Bd & Bth	Living / Avg.	Land Avg.	DOM
1600 Ala Moana Boulevard 2010	\$728,000	1 & 1/0	930 \$783	138,216 \$5	12

Address	Tax Maint. Ass.	Assessed Land	Assessed Building	Assessed Total	Ratio	Year & Remodeled
1600 Ala Moana Boulevard 2010	\$216 \$1,431 \$0	\$46,800	\$672,600	\$719,400	101%	1973 & NA

[1600 Ala Moana Boulevard 2010](#) - MLS#: [202414399](#) - Enjoy the unobstructed ocean view from well maintained 1 bedroom, 1 bath unit with 1 covered parking stall. Washer/dry in unit. Conveniently located at the entrance to Waikiki, close to Ala Moana Beach Park, Magic Island and Ala Moana Shopping Center. Steps away from shopping, dining, and entertainment. Maintenance fee \$1083.63/month, reserved fund contribution \$347.62/month. Property is sold "AS IS". **Region:** Metro **Neighborhood:** Ala Moana **Condition:** Above Average **Parking:** Assigned, Covered - 1 **Total Parking:** 1 **View:** Ocean, Other **Frontage:** **Pool:** **Zoning:** 12 - A-2 Medium Density Apartme **Sale Conditions:** None **Schools:** , , * [Request Showing](#), [Photos](#), [History](#), [Maps](#), [Deed](#), [Watch List](#), [Tax Info](#)

DOM = Days on Market