

Villa on Eaton Square 400 Hobron Lane Unit 2206, Honolulu 96815 * Villa on Eaton Square

*** \$398,900**

Beds: **0**
 Bath: **1/0**
 Living Sq. Ft.: **462**
 Land Sq. Ft.: **0**
 Lanai Sq. Ft.: **0**
 Sq. Ft. Other: **0**
 Total Sq. Ft. **462**
 Maint./Assoc. **\$665 / \$0**
 Parking: **Unassigned**

MLS#: **202414449, FS**
 Status: **Active**
 List Date & DOM: **06-17-2024 & 11**
 Condition: **Excellent**
 Frontage: **Stream/Canal**
 Tax/Year: **\$116/2023**
 Neighborhood: **Waikiki**
 Flood Zone: **Zone AO - Tool**

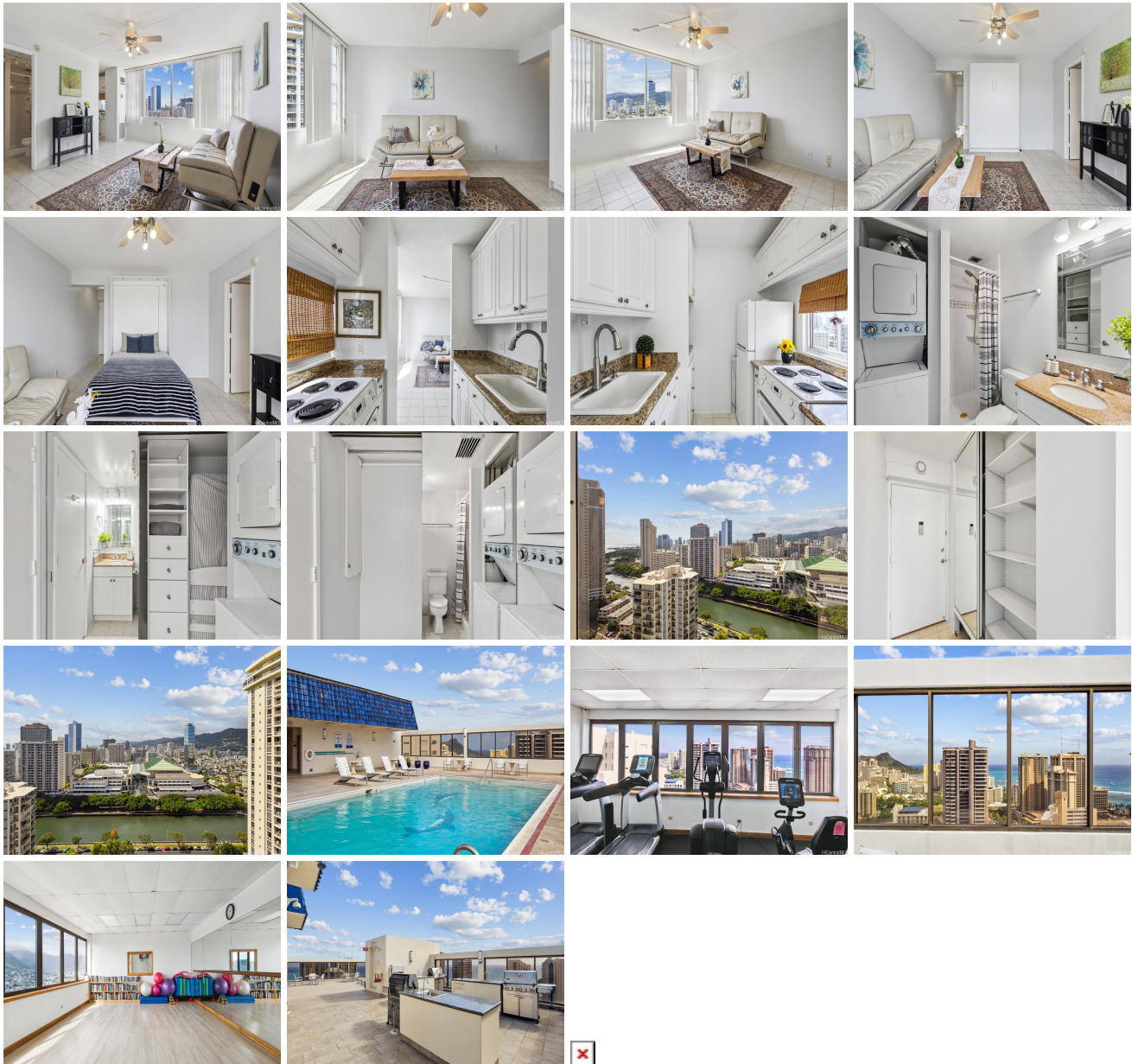
Year Built: **1974**
 Remodeled:
 Total Parking: **1**
[Assessed Value](#)
 Building: **\$397,000**
 Land: **\$48,000**
 Total: **\$445,000**
 Stories / CPR: / **No**

Zoning: X2 - Apartment Precinct

Frontage: **Stream/Canal**

View: **City, Marina/Canal, Mountain, Ocean, Sunset**

Public Remarks: Welcome to this spacious 462 sq. ft. studio in the heart of Waikiki! Enjoy the convenience of an in-unit washer/dryer, a full kitchen, and a Murphy bed. Recently painted, the unit comes with one parking stall and a storage locker. The monthly maintenance fee includes all utilities, including water and electricity. There are beautiful views of Ala Wai, the convention center, and the mountains from the unit. The Villa on Eaton Square is pet friendly and it offers rooftop amenities such as a pool, BBQ area, yoga/exercise room, and fitness center. With 24-hour security, and proximity to a grocery store, restaurants, shops, and Ala Moana Mall, this studio has everything you need. Schedule a viewing today! **Sale Conditions:** None **Schools:** , , * [Request Showing](#), [Photos](#), [History](#), [Maps](#), [Deed](#), [Watch List](#), [Tax Info](#)



Address	Price	Bd & Bth	Living / Avg.	Land Avg.	Lanai	Occ.	FL	DOM
400 Hobron Lane 2206	\$398,900	0 & 1/0	462 \$863	0 \$inf	0	48%	22	11

Address	Tax Maint. Ass.	Assessed Land	Assessed Building	Assessed Total	Ratio	Year & Remodeled
400 Hobron Lane 2206	\$116 \$665 \$0	\$48,000	\$397,000	\$445,000	90%	1974 & NA

[400 Hobron Lane 2206](#) - MLS#: [202414449](#) - Welcome to this spacious 462 sq. ft. studio in the heart of Waikiki! Enjoy the convenience of an in-unit washer/dryer, a full kitchen, and a Murphy bed. Recently painted, the unit comes with one parking stall and a storage locker. The monthly maintenance fee includes all utilities, including water and electricity. There are beautiful views of Ala Wai, the convention center, and the mountains from the unit. The Villa on Eaton Square is pet friendly and it offers rooftop amenities such as a pool, BBQ area, yoga/exercise room, and fitness center. With 24-hour security, and proximity to a grocery store, restaurants, shops, and Ala Moana Mall, this studio has everything you need. Schedule a viewing today! **Region:** Metro **Neighborhood:** Waikiki **Condition:** Excellent **Parking:** Unassigned **Total Parking:** 1 **View:** City, Marina/Canal, Mountain, Ocean, Sunset **Frontage:** Stream/Canal **Pool:** **Zoning:** X2 - Apartment Precinct **Sale Conditions:** None **Schools:** , , * [Request Showing](#), [Photos](#), [History](#), [Maps](#), [Deed](#), [Watch List](#), [Tax Info](#)

DOM = Days on Market, Occ. = Occupancy, FL = Floor Number