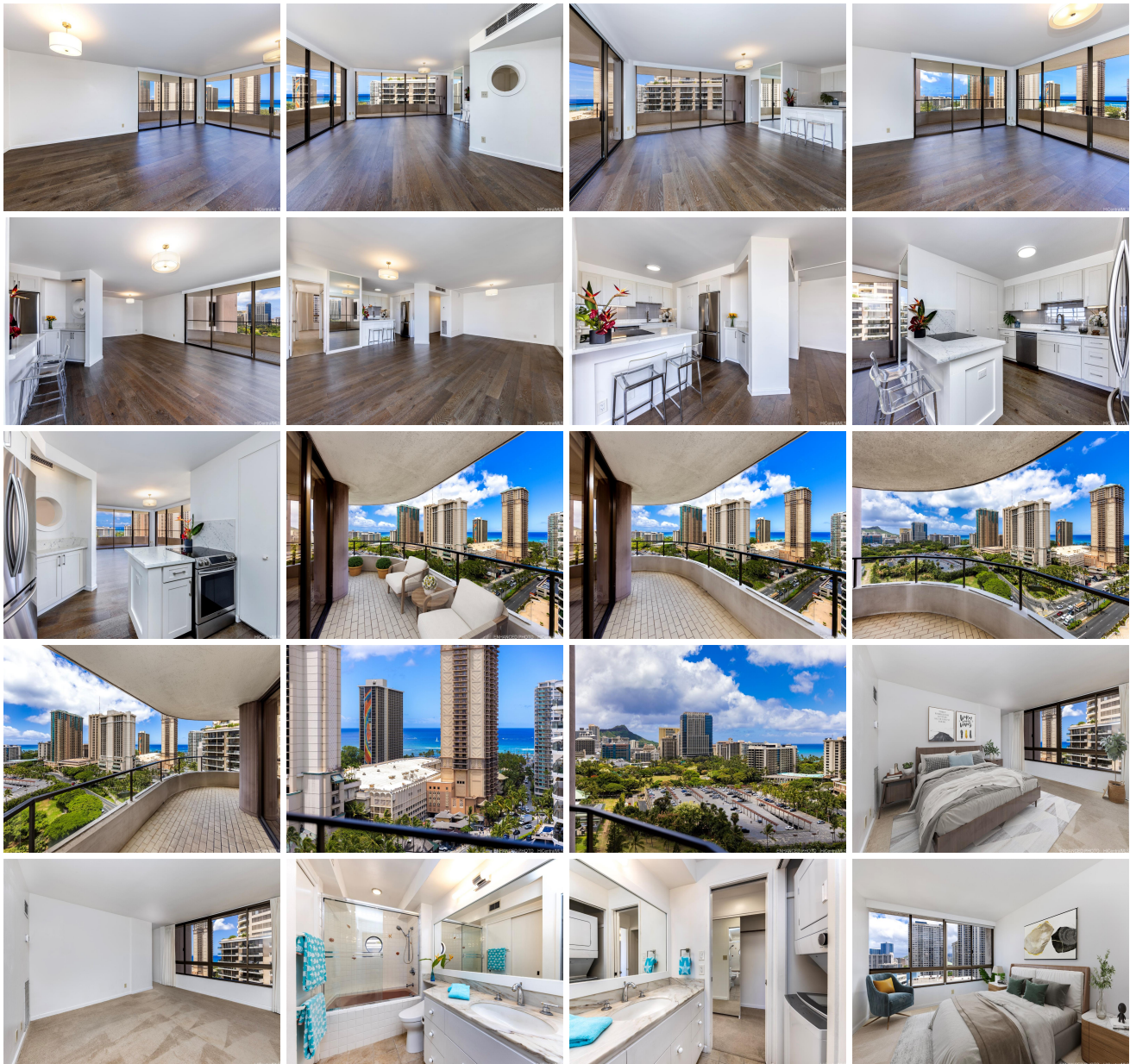


Canterbury Pl 1910 Ala Moana Boulevard Unit 19A, Honolulu 96815 * Canterbury Pl *

\$435,000

Bed: 2	MLS#: 202414451, LH	Year Built: 1978
Bath: 2/0	Status: Active	Remodeled:
Living Sq. Ft.: 1,270	List Date & DOM: 06-18-2024 & 12	Total Parking: 1
Land Sq. Ft.: 35,371	Condition: Above Average	Assessed Value
Lanai Sq. Ft.: 280	Frontage: Other	Building: \$933,000
Sq. Ft. Other: 0	Tax/Year: \$278/2024	Land: \$59,400
Total Sq. Ft. 1,550	Neighborhood: Waikiki	Total: \$992,400
Maint./Assoc. \$2,320 / \$0	Flood Zone: Zone AE - Tool	Stories / CPR: 15-20 / No
Parking: Assigned, Covered - 1, Garage	Frontage: Other	
Zoning: X2 - Apartment Precinct	View: Ocean	

Public Remarks: Canterbury Place is a well-established condominium situated at the entrance of Waikiki. This 2 bedroom, 2 bath residence welcomes you home with a spacious, open-concept main living area combining living, kitchen, and dining spaces, with Pacific Ocean views as your backdrop. From the wrap-around lanai, enjoy vistas of Diamond Head, verdant parks, twinkling city lights, with wrap-around Pacific Ocean views. For added privacy, the bedrooms are positioned on opposite sides of the floor plan, with the primary suite enjoying Pacific Ocean views. Unit has been upgraded with new flooring in the main living area, an updated kitchen, popcorn ceiling removal, lighting upgrades, and more. Superb location puts you nearby all-things Ala Moana and Waikiki, offering your choice of beaches, shops, restaurants, and water activities at your leisure. Listing includes enhanced, virtually staged and zoomed-in photos. This property is land lease with currently \$58.13/mo and Sandwich lease \$941.71/mo. **Sale Conditions:** None **Schools:** [Ala Wai](#), [Washington](#), [Kaimuki](#) * [Request Showing](#), [Photos](#), [History](#), [Maps](#), [Deed](#), [Watch List](#), [Tax Info](#)





Address	Price	Bd & Bth	Living / Avg.	Land Avg.	Lanai	Occ.	FL	DOM
1910 Ala Moana Boulevard 19A	\$435,000 LH	2 & 2/0	1,270 \$343	35,371 \$12	280	34%	19	12

Address	Tax Maint. Ass.	Assessed Land	Assessed Building	Assessed Total	Ratio	Year & Remodeled
1910 Ala Moana Boulevard 19A	\$278 \$2,320 \$0	\$59,400	\$933,000	\$992,400	44%	1978 & NA

[1910 Ala Moana Boulevard 19A](#) - MLS#: [202414451](#) - Canterbury Place is a well-established condominium situated at the entrance of Waikiki. This 2 bedroom, 2 bath residence welcomes you home with a spacious, open-concept main living area combining living, kitchen, and dining spaces, with Pacific Ocean views as your backdrop. From the wrap-around lanai, enjoy vistas of Diamond Head, verdant parks, twinkling city lights, with wrap-around Pacific Ocean views. For added privacy, the bedrooms are positioned on opposite sides of the floor plan, with the primary suite enjoying Pacific Ocean views. Unit has been upgraded with new flooring in the main living area, an updated kitchen, popcorn ceiling removal, lighting upgrades, and more. Superb location puts you nearby all-things Ala Moana and Waikiki, offering your choice of beaches, shops, restaurants, and water activities at your leisure. Listing includes enhanced, virtually staged and zoomed-in photos. This property is land lease with currently \$58.13/mo and Sandwich lease \$941.71/mo. **Region:** Metro **Neighborhood:** Waikiki **Condition:** Above Average **Parking:** Assigned, Covered - 1, Garage **Total Parking:** 1 **View:** Ocean **Frontage:** Other **Pool:** **Zoning:** X2 - Apartment Precinct **Sale Conditions:** None **Schools:** [Ala Wai](#), [Washington](#), [Kaimuki](#) * [Request Showing](#), [Photos](#), [History](#), [Maps](#), [Deed](#), [Watch List](#), [Tax Info](#)

DOM = Days on Market, Occ. = Occupancy, FL = Floor Number