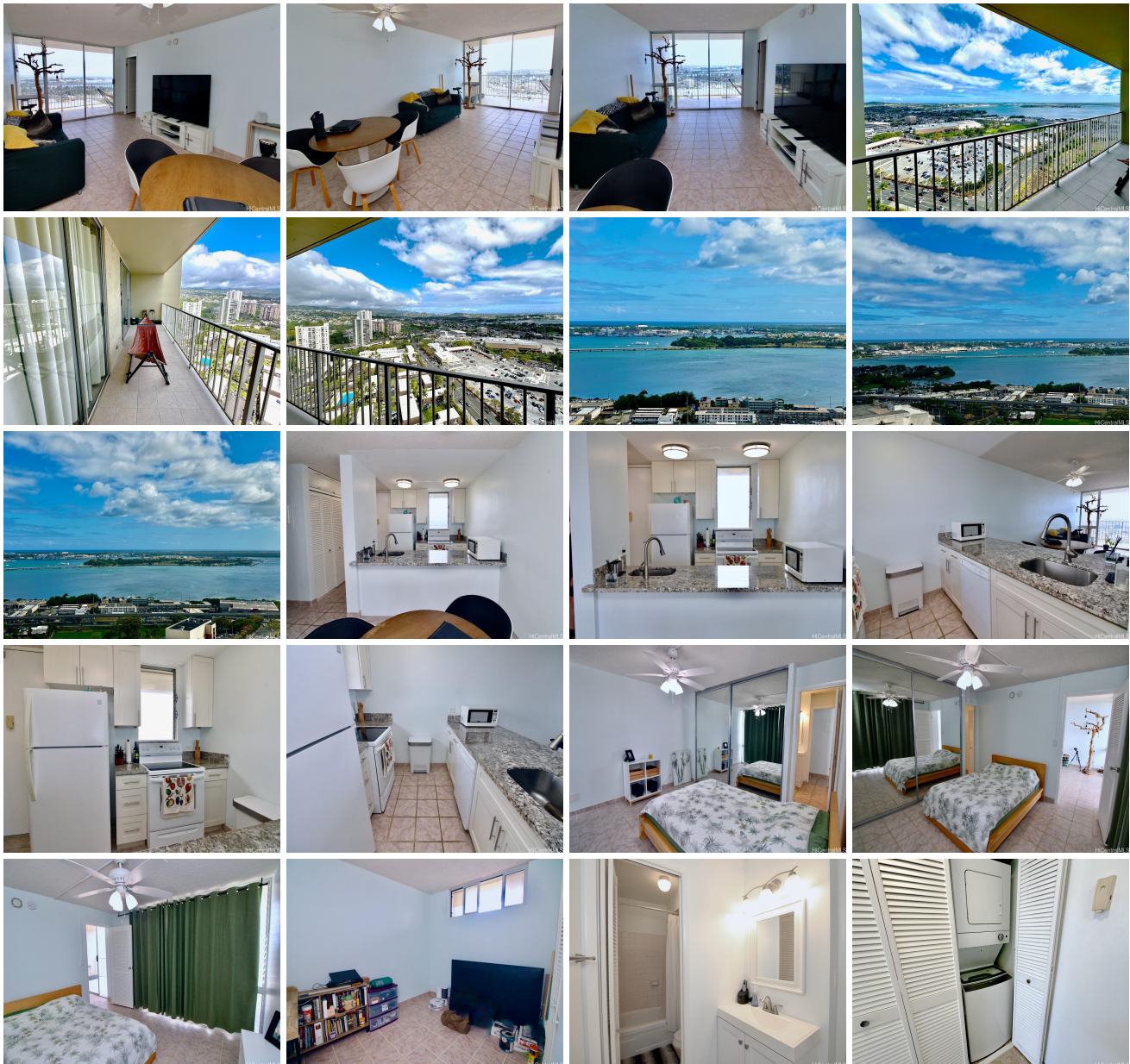


**Lele Pono 98-099 Uao Place Unit 2702, Aiea 96701 \* Lele Pono \* \$480,000**

Beds: <b>2</b>	MLS#: <b>202414463, FS</b>	Year Built: <b>1976</b>
Bath: <b>1/0</b>	Status: <b>Active</b>	Remodeled:
Living Sq. Ft.: <b>720</b>	List Date & DOM: <b>06-17-2024 &amp; 13</b>	Total Parking: <b>1</b>
Land Sq. Ft.: <b>93,785</b>	Condition: <b>Excellent</b>	<a href="#">Assessed Value</a>
Lanai Sq. Ft.: <b>144</b>	Frontage:	Building: <b>\$458,700</b>
Sq. Ft. Other: <b>0</b>	Tax/Year: <b>\$81/2023</b>	Land: <b>\$44,100</b>
Total Sq. Ft. <b>864</b>	Neighborhood: <b>Pearlridge</b>	Total: <b>\$502,800</b>
Maint./Assoc. <b>\$674 / \$0</b>	<a href="#">Flood Zone</a> : <b>Zone X - Tool</b>	Stories / CPR: <b>21+ / No</b>
Parking: <b>Assigned, Covered - 1</b>	Frontage:	
<a href="#">Zoning</a> : <b>12 - A-2 Medium Density Apartme</b>	View: <b>Coastline, Marina/Canal, Ocean</b>	

**Public Remarks:** Cool and breezy with Pearl Harbor view for days. Enjoy your morning java on the lanai. Flooring is easy to maintain ceramic tile. Building has a pool. One covered parking. VA approved. Super easy freeway access. Convenient to major military installations. Priced to sell! Association fee varies with electric usage. Easy to see on short notice. **Sale Conditions:** None **Schools:** , \* [Request Showing](#), [Photos](#), [History](#), [Maps](#), [Deed](#), [Watch List](#), [Tax Info](#)





Address	Price	Bd & Bth	Living / Avg.	Land   Avg.	Lanai	Occ.	FL	DOM
<a href="#">98-099 Uao Place 2702</a>	<a href="#">\$480,000</a>	2 & 1/0	720   \$667	93,785   \$5	144	50%	27	13

Address	Tax   Maint.   Ass.	Assessed Land	Assessed Building	Assessed Total	Ratio	Year & Remodeled
<a href="#">98-099 Uao Place 2702</a>	\$81   \$674   \$0	\$44,100	\$458,700	\$502,800	95%	1976 & NA

[98-099 Uao Place 2702](#) - MLS#: [202414463](#) - Cool and breezy with Pearl Harbor view for days. Enjoy your morning java on the lanai. Flooring is easy to maintain ceramic tile. Building has a pool. One covered parking. VA approved. Super easy freeway access. Convenient to major military installations. Priced to sell! Association fee varies with electric usage. Easy to see on short notice. **Region:** Pearl City **Neighborhood:** Pearlridge **Condition:** Excellent **Parking:** Assigned, Covered - 1 **Total Parking:** 1 **View:** Coastline, Marina/Canal, Ocean **Frontage:** **Pool:** **Zoning:** 12 - A-2 Medium Density Apartme **Sale Conditions:** None **Schools:** , , \* [Request Showing](#), [Photos](#), [History](#), [Maps](#), [Deed](#), [Watch List](#), [Tax Info](#)

DOM = Days on Market, Occ. = Occupancy, FL = Floor Number