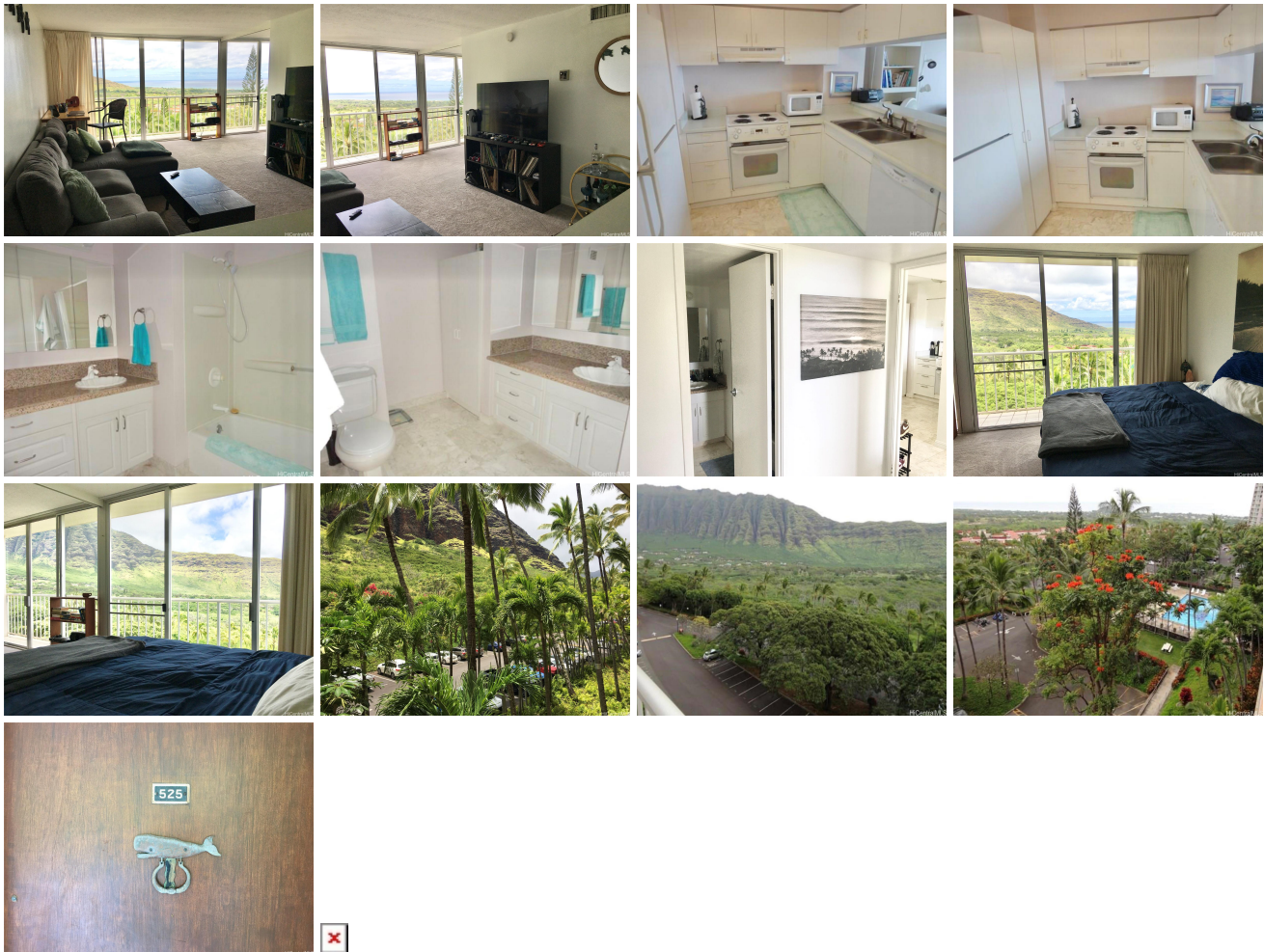


**Makaha Valley Towers 84-740 Kili Drive Unit 525, Waianae 96792 \* Makaha Valley Towers**

**\* \$219,000**

Beds: <b>1</b>	MLS#: <b>202414489, FS</b>	Year Built: <b>1970</b>
Bath: <b>1/0</b>	Status: <b>Active</b>	Remodeled:
Living Sq. Ft.: <b>684</b>	List Date & DOM: <b>06-19-2024 &amp; 10</b>	Total Parking: <b>1</b>
Land Sq. Ft.: <b>612,759</b>	Condition: <b>Above Average</b>	<a href="#">Assessed Value</a>
Lanai Sq. Ft.: <b>60</b>	Frontage:	Building: <b>\$194,400</b>
Sq. Ft. Other: <b>0</b>	Tax/Year: <b>\$66/2024</b>	Land: <b>\$31,600</b>
Total Sq. Ft. <b>744</b>	Neighborhood: <b>Makaha</b>	Total: <b>\$226,000</b>
Maint./Assoc. <b>\$1,065 / \$0</b>	<a href="#">Flood Zone: Zone D - Tool</a>	Stories / CPR: / <b>No</b>
Parking: <b>Guest, Open - 1, Unassigned</b>	Frontage:	
<a href="#">Zoning: 12 - A-2 Medium Density Apartme</a>	View: <b>Garden, Golf Course, Mountain, Ocean</b>	

**Public Remarks:** Welcome to your oasis at Makaha Valley Towers! This charming 1-BR, 1-bath condo is located on a lower floor, offering serene mountain, waterfall, & ocean views that will take your breath away. From your windows, enjoy the beauty of a lush treetop canopy, creating a picturesque backdrop for your daily life. Upgraded with the popcorn ceiling removed, this unit exudes a vintage charm bathed in natural light which highlights the thoughtful layout. Step inside to find a partially furnished space with ample storage that feels just like home. The lower floor location means fewer stairs to climb, ensuring easy access and convenience. Residents of Makaha Valley Towers enjoy a host of amenities including a refreshing saltwater pool, perfect for leisurely swims. The beautifully landscaped grounds feature a tiki-torched lit BBQ area, ideal for entertaining friends & family. About a mile away, discover the pristine beaches of Makaha, where you can indulge in sunbathing, swimming, & surfing. This condo is more than just a home; it's a lifestyle. Don't miss your chance to own a piece of paradise in this sought-after community & experience the tranquility & beauty of Makaha Valley living. **Sale Conditions:** None **Schools:** [Makaha](#), [Waianae](#), [Waianae](#) \* [Request Showing](#), [Photos](#), [History](#), [Maps](#), [Deed](#), [Watch List](#), [Tax Info](#)



Address	Price	Bd & Bth	Living / Avg.	Land   Avg.	Lanai	Occ.	FL	DOM
<a href="#">84-740 Kili Drive 525</a>	<a href="#">\$219,000</a>	1 & 1/0	684   \$320	612,759   \$0	60	45%	525	10

Address	Tax   Maint.   Ass.	Assessed Land	Assessed Building	Assessed Total	Ratio	Year & Remodeled
<a href="#">84-740 Kili Drive 525</a>	\$66   \$1,065   \$0	\$31,600	\$194,400	\$226,000	97%	1970 & NA

[84-740 Kili Drive 525](#) - MLS#: [202414489](#) - Welcome to your oasis at Makaha Valley Towers! This charming 1-BR, 1-bath condo is located on a lower floor, offering serene mountain, waterfall, & ocean views that will take your breath away. From your windows, enjoy the beauty of a lush treetop canopy, creating a picturesque backdrop for your daily life. Upgraded with the popcorn ceiling removed, this unit exudes a vintage charm bathed in natural light which highlights the thoughtful layout. Step inside to find a partially furnished space with ample storage that feels just like home. The lower floor location means fewer stairs to climb, ensuring easy access and convenience. Residents of Makaha Valley Towers enjoy a host of amenities including a refreshing saltwater pool, perfect for leisurely swims. The beautifully landscaped grounds feature a tiki-torched lit BBQ area, ideal for entertaining friends & family. About a mile away, discover the pristine beaches of Makaha, where you can indulge in sunbathing, swimming, & surfing. This condo is more than just a home; it's a lifestyle. Don't miss your chance to own a piece of paradise in this sought-after community & experience the tranquility & beauty of Makaha Valley living.

**Region:** Leeward **Neighborhood:** Makaha **Condition:** Above Average **Parking:** Guest, Open - 1, Unassigned **Total Parking:** 1 **View:** Garden, Golf Course, Mountain, Ocean **Frontage:** **Pool:** **Zoning:** 12 - A-2 Medium Density Apartme **Sale Conditions:** None **Schools:** [Makaha](#), [Waianae](#), [Waianae](#) \* [Request Showing](#), [Photos](#), [History](#), [Maps](#), [Deed](#), [Watch List](#), [Tax Info](#)

DOM = Days on Market, Occ. = Occupancy, FL = Floor Number