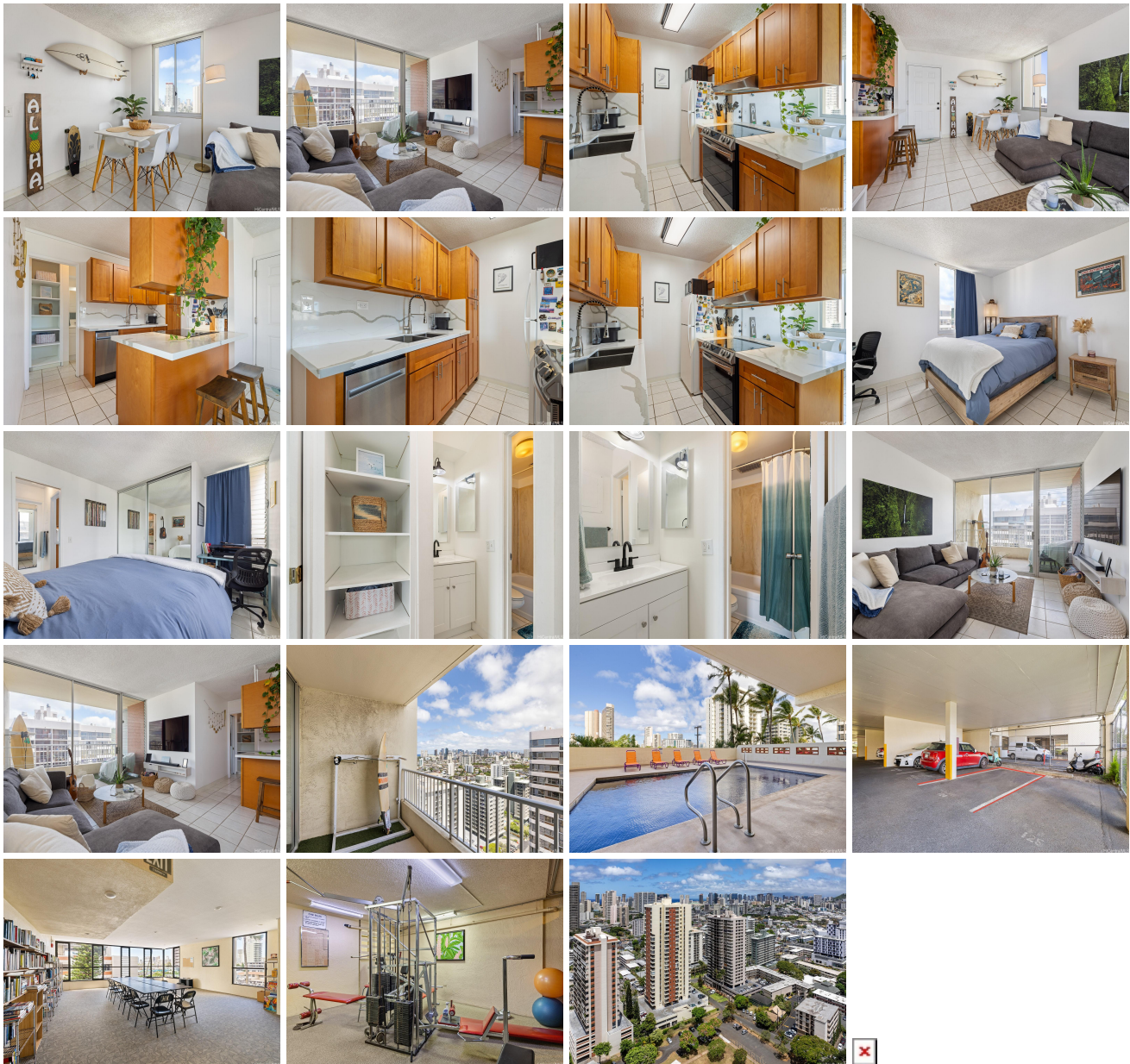


Hale Kulanui 2740 Kuilei Street Unit 2206, Honolulu 96826 * Hale Kulanui * \$405,000

Beds: 1	MLS#: 202414559, FS	Year Built: 1975
Bath: 1/0	Status: Active	Remodeled:
Living Sq. Ft.: 541	List Date & DOM: 06-24-2024 & 22	Total Parking: 1
Land Sq. Ft.: 30,318	Condition: Excellent, Above Average	Assessed Value
Lanai Sq. Ft.: 78	Frontage:	Building: \$319,500
Sq. Ft. Other: 0	Tax/Year: \$45/2023	Land: \$34,900
Total Sq. Ft. 619	Neighborhood: Moiliili	Total: \$354,400
Maint./Assoc. \$715 / \$0	Flood Zone : Zone X - Tool	Stories / CPR: One / No
Parking: Assigned, Covered - 1	Frontage:	
Zoning : 12 - A-2 Medium Density Apartme	View: City, Mountain	

Public Remarks: Enjoy sunset views from your new high-floor, corner unit in the heart of Moiliili! This 1 bed/1 bath condo features a spacious lanai, secure covered parking, and an additional storage unit on the same floor. The move-in-ready unit includes a newly renovated kitchen and bathroom vanity. Hale Kulanui is a secure building with an on-site resident manager, offering an array of amenities, including a swimming pool, gym, library, meeting and party rooms, and a BBQ picnic area. Pet-friendly and conveniently located, this condo is just minutes from UH Manoa, freeway access, bus lines, markets, and restaurants. Take in the beautiful city and mountain views from your private enclosed lanai. The monthly maintenance fee of \$715 includes water, sewer, internet and cable TV. Welcome home to Hale Kulanui! **Sale Conditions:** None **Schools:** , , * [Request Showing](#), [Photos](#), [History](#), [Maps](#), [Deed](#), [Watch List](#), [Tax Info](#)



Address	Price	Bd & Bth	Living / Avg.	Land Avg.	Lanai	Occ.	FL	DOM
---------	-------	----------	---------------	-------------	-------	------	----	-----

2740 Kuilei Street 2206	\$405,000	1 & 1/0	541 \$749	30,318 \$13	78	57%	21	22
---	---------------------------	---------	-------------	---------------	----	-----	----	----

Address	Tax Maint. Ass.	Assessed Land	Assessed Building	Assessed Total	Ratio	Year & Remodeled
2740 Kuilei Street 2206	\$45 \$715 \$0	\$34,900	\$319,500	\$354,400	114%	1975 & NA

[2740 Kuilei Street 2206](#) - MLS#: [202414559](#) - Enjoy sunset views from your new high-floor, corner unit in the heart of Moiliili! This 1 bed/1 bath condo features a spacious lanai, secure covered parking, and an additional storage unit on the same floor. The move-in-ready unit includes a newly renovated kitchen and bathroom vanity. Hale Kulanui is a secure building with an on-site resident manager, offering an array of amenities, including a swimming pool, gym, library, meeting and party rooms, and a BBQ picnic area. Pet-friendly and conveniently located, this condo is just minutes from UH Manoa, freeway access, bus lines, markets, and restaurants. Take in the beautiful city and mountain views from your private enclosed lanai. The monthly maintenance fee of \$715 includes water, sewer, internet and cable TV. Welcome home to Hale Kulanui! **Region:** Metro **Neighborhood:** Moiliili **Condition:** Excellent, Above Average **Parking:** Assigned, Covered - 1 **Total Parking:** 1 **View:** City, Mountain **Frontage:** **Pool:** **Zoning:** 12 - A-2 Medium Density Apartme **Sale Conditions:** None **Schools:** , , * [Request Showing](#), [Photos](#), [History](#), [Maps](#), [Deed](#), [Watch List](#), [Tax Info](#)

DOM = Days on Market, Occ. = Occupancy, FL = Floor Number