

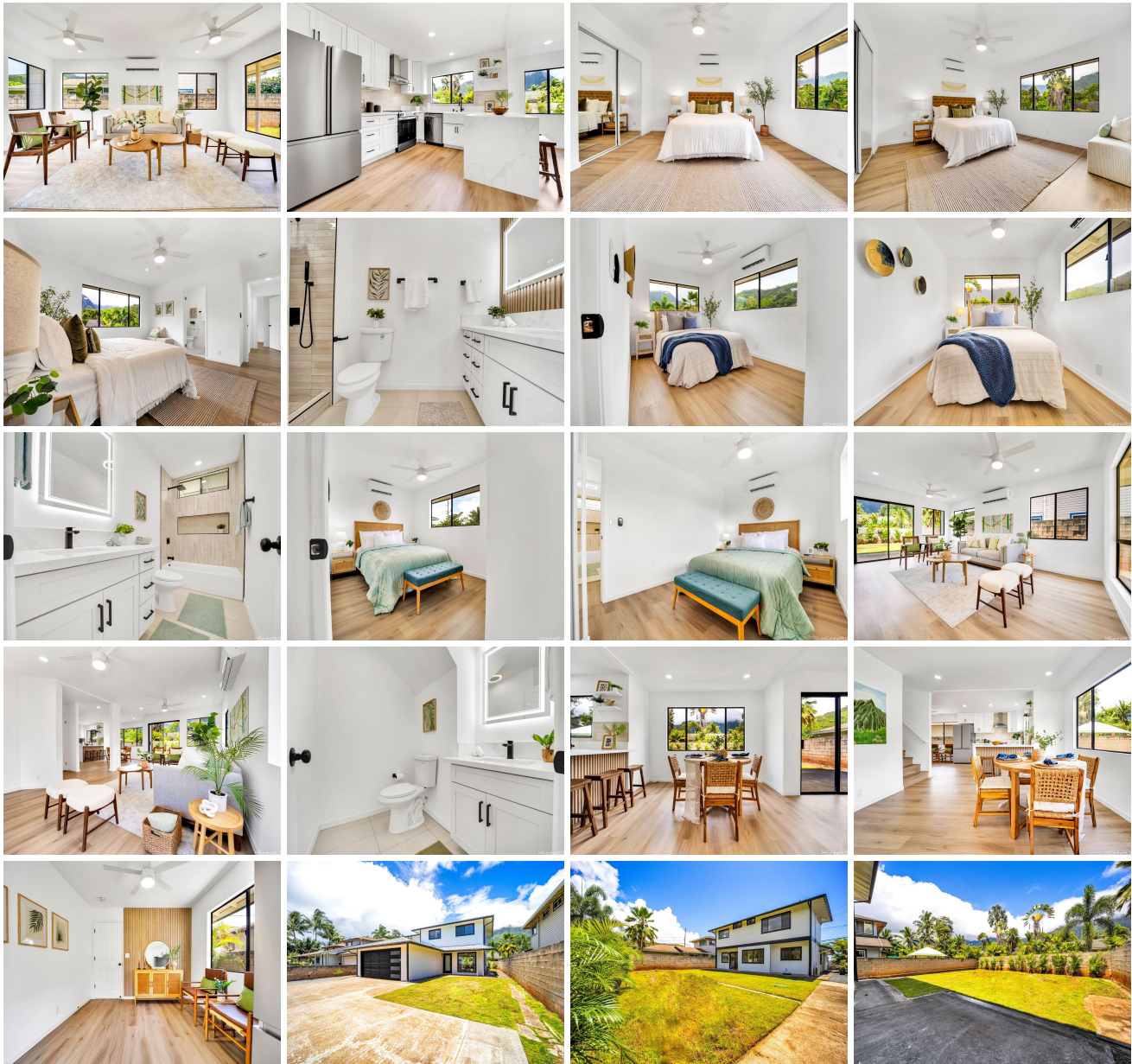
47-786 Kamehameha Highway, Kaneohe 96744 * \$1,200,000

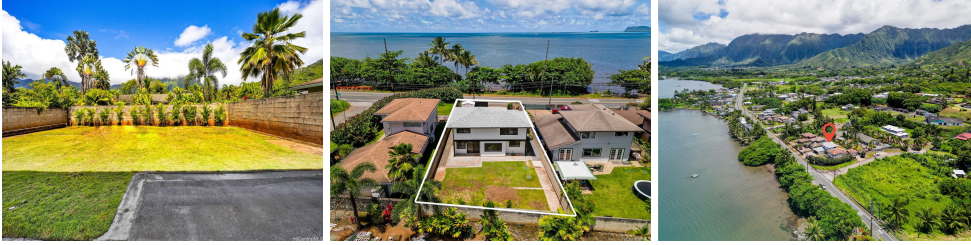
Beds: 3	MLS#: <u>202414617</u>, FS	Year Built: 1990
Bath: 2/1	Status: Active	Remodeled:
Living Sq. Ft.: 1,541	List Date & DOM: 07-01-2024 & 12	Total Parking: 2
Land Sq. Ft.: 6,000	Condition: Excellent	Assessed Value
Lanai Sq. Ft.: 20	Frontage: Other	Building: \$285,200
Sq. Ft. Other: 39	Tax/Year: \$234/2024	Land: \$698,300
Total Sq. Ft. 1,600	Neighborhood: Kaalaea	Total: \$983,500
Maint./Assoc. \$0 / \$0	Flood Zone : Zone X - Tool	Stories / CPR: Two / No
Parking: 2 Car, Driveway, Garage	Frontage: Other	

[Zoning](#): **03 - R10 - Residential District**

View: **Mountain, Ocean, Other, Sunrise, Sunset**

Public Remarks: E Komo Mai to your newly renovated home with deeded beach access, perfect for you and your guests. This home has been elegantly revitalized in 2024, seamlessly blending modern sophistication with charming country aesthetics. Upon arrival, you will be greeted by a plethora of parking options, including ample space for your boat. The home boasts fresh paint both inside and out, a brand-new garage door, and luxury vinyl plank flooring throughout. Each room is equipped with a split A/C system, ensuring comfort in every corner of the home. The kitchen is a culinary masterpiece, featuring brand-new appliances, a farm sink, soft-close white shaker cabinets with a custom backsplash, and an accent wall that complements the quartz waterfall countertop. Enjoy cooking and dining with stunning views of the Ko'olau mountains. Conveniently located, you are just a short drive from local eateries, grocery stores, and a variety of outdoor activities. The location offers easy access, providing seamless travel to both the North Shore and Kaneohe town. Embrace the best of both worlds in this exquisite Hawaiian home, where modern luxury meets country beauty. **Sale Conditions:** None **Schools:** [Waiahole](#), [King](#), [Castle](#) * [Request Showing](#), [Photos](#), [History](#), [Maps](#), [Deed](#), [Watch List](#), [Tax Info](#)





Address	Price	Bd & Bth	Living / Avg.	Land Avg.	DOM
47-786 Kamehameha Highway	\$1,200,000	3 & 2/1	1,541 \$779	6,000 \$200	12

Address	Tax Maint. Ass.	Assessed Land	Assessed Building	Assessed Total	Ratio	Year & Remodeled
47-786 Kamehameha Highway	\$234 \$0 \$0	\$698,300	\$285,200	\$983,500	122%	1990 & NA

[47-786 Kamehameha Highway](#) - MLS#: [202414617](#) - E Komo Mai to your newly renovated home with deeded beach access, perfect for you and your guests. This home has been elegantly revitalized in 2024, seamlessly blending modern sophistication with charming country aesthetics. Upon arrival, you will be greeted by a plethora of parking options, including ample space for your boat. The home boasts fresh paint both inside and out, a brand-new garage door, and luxury vinyl plank flooring throughout. Each room is equipped with a split A/C system, ensuring comfort in every corner of the home. The kitchen is a culinary masterpiece, featuring brand-new appliances, a farm sink, soft-close white shaker cabinets with a custom backsplash, and an accent wall that complements the quartz waterfall countertop. Enjoy cooking and dining with stunning views of the Ko'olau mountains. Conveniently located, you are just a short drive from local eateries, grocery stores, and a variety of outdoor activities. The location offers easy access, providing seamless travel to both the North Shore and Kaneohe town. Embrace the best of both worlds in this exquisite Hawaiian home, where modern luxury meets country beauty. **Region:** Kaneohe **Neighborhood:** Kaalaea **Condition:** Excellent **Parking:** 2 Car, Driveway, Garage **Total Parking:** 2 **View:** Mountain, Ocean, Other, Sunrise, Sunset **Frontage:** Other **Pool:** None **Zoning:** 03 - R10 - Residential District **Sale Conditions:** None **Schools:** [Waiahole](#), [King](#), [Castle](#) * [Request Showing](#), [Photos](#), [History](#), [Maps](#), [Deed](#), [Watch List](#), [Tax Info](#)

DOM = Days on Market