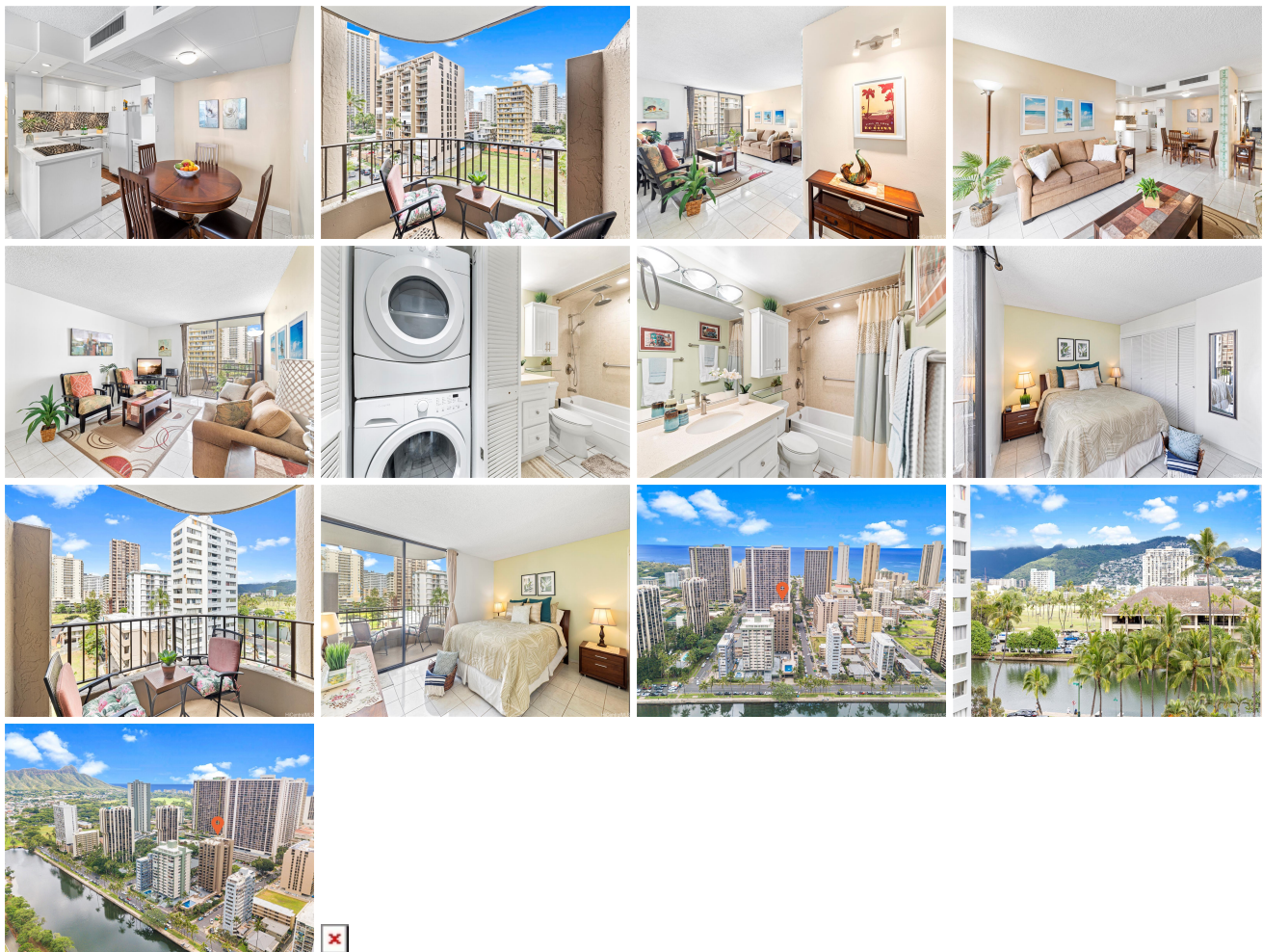


Leisure Heritage 311 Ohua Avenue Unit 501A, Honolulu 96815 * Leisure Heritage *

\$489,000

| | | |
|---|--|--|
| Beds: 1 Bath: 1/0 Living Sq. Ft.: 720 Land Sq. Ft.: 21,432 Lanai Sq. Ft.: 77 Sq. Ft. Other: 0 Total Sq. Ft. 797 Maint./Assoc. \$984 / \$0 Parking: Assigned, Garage, Guest Zoning: X2 - Apartment Precinct | MLS#: 202414634, FS Status: Active List Date & DOM: 06-18-2024 & 11 Condition: Above Average Frontage: Tax/Year: \$126/2023 Neighborhood: Waikiki Flood Zone: Zone AE - Tool | Year Built: 1974 Remodeled: 2023 Total Parking: 1 Assessed Value Building: \$348,100 Land: \$85,600 Total: \$433,700 Stories / CPR: / No Frontage: View: City, Garden, Mountain |
|---|--|--|

Public Remarks: This turn-key, fully furnished condo shows nicely! Clean and bright and updated. Maintenance fee includes: electricity, central air, internet, cable, and hot water. *Agent has the condo docs as well as the insurance schedule and several lenders who can lend on it. NO ASSESSMENTS. The unit features ample natural light, a renovated bathroom, and a partially renovated kitchen with a new stove, sink, and countertops. The open-concept living area integrates the kitchen, dining area, and living spaces. One of the largest 1 bedrooms on the market at 720 sqft! There are two private lanais, one with a peekaboo ocean view and the other with mountain, and canal views. Head to the Pool area to host a BBQ with friends or enjoy the views from the lanai. One dedicated parking space, underground, in a gated garage and guest parking. Just a minute away from Waikiki Beach, The Shell amphitheater, shopping, and dining. 6-month rental minimum. **Sale Conditions:** None **Schools:** [Jefferson](#), [Washington](#), [Kaimuki](#) * [Request Showing](#), [Photos](#), [History](#), [Maps](#), [Deed](#), [Watch List](#), [Tax Info](#)



| Address | Price | Bd & Bth | Living / Avg. | Land Avg. | Lanai | Occ. | FL | DOM |
|--------------------------------------|------------------|----------|---------------|---------------|-------|------|----|-----|
| 311 Ohua Avenue 501A | \$489,000 | 1 & 1/0 | 720 \$679 | 21,432 \$23 | 77 | 68% | 5 | 11 |

| Address | Tax Maint. Ass. | Assessed Land | Assessed Building | Assessed Total | Ratio | Year & Remodeled |
|--------------------------------------|---------------------|---------------|-------------------|----------------|-------|------------------|
| 311 Ohua Avenue 501A | \$126 \$984 \$0 | \$85,600 | \$348,100 | \$433,700 | 113% | 1974 & 2023 |

[311 Ohua Avenue 501A](#) - MLS#: [202414634](#) - This turn-key, fully furnished condo shows nicely! Clean and bright and updated. Maintenance fee includes: electricity, central air, internet, cable, and hot water. *Agent has the condo docs as well as the insurance schedule and several lenders who can lend on it. NO ASSESSMENTS. The unit features ample natural light, a renovated bathroom, and a partially renovated kitchen with a new stove, sink, and countertops. The open-concept living area integrates the kitchen, dining area, and living spaces. One of the largest 1 bedrooms on the market at 720 sqft! There are two private lanais, one with a peekaboo ocean view and the other with mountain, and canal views. Head to the Pool area to host a BBQ with friends or enjoy the views from the lanai. One dedicated parking space, underground, in a gated garage and guest parking. Just a minute away from Waikiki Beach, The Shell amphitheater, shopping, and dining. 6-month rental minimum. **Region:** Metro **Neighborhood:** Waikiki **Condition:** Above Average **Parking:** Assigned, Garage, Guest **Total Parking:** 1 **View:** City, Garden, Mountain **Frontage:** **Pool:** **Zoning:** X2 - Apartment Precinct **Sale Conditions:** None **Schools:** [Jefferson](#), [Washington](#), [Kaimuki](#) * [Request Showing](#), [Photos](#), [History](#), [Maps](#), [Deed](#), [Watch List](#), [Tax Info](#)

DOM = Days on Market, Occ. = Occupancy, FL = Floor Number