

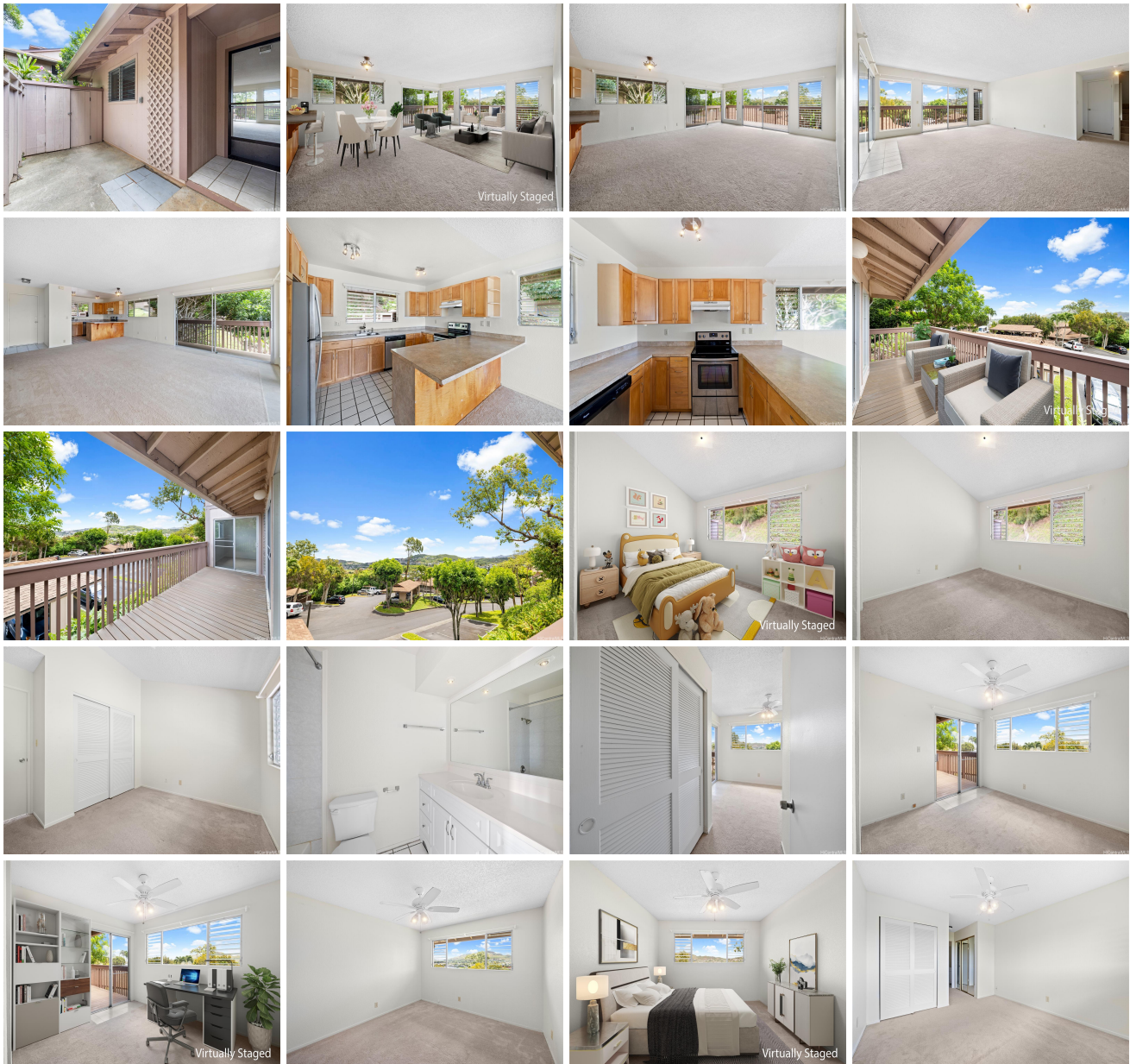
Lakeview 1130A Akipohē Street Unit 16A, Kailua 96734 * \$835,000

Beds: 3	MLS#: 202414647, FS	Year Built: 1980
Bath: 2/0	Status: Active	Remodeled:
Living Sq. Ft.: 1,355	List Date & DOM: 07-08-2024 & 5	Total Parking: 2
Land Sq. Ft.: 391,474	Condition: Above Average	Assessed Value
Lanai Sq. Ft.: 268	Frontage:	Building: \$648,300
Sq. Ft. Other: 0	Tax/Year: \$237/2023	Land: \$165,000
Total Sq. Ft. 1,623	Neighborhood: Enchanted Lake	Total: \$813,300
Maint./Assoc. \$1,124 / \$0	Flood Zone : Zone X - Tool	Stories / CPR: Two / No
Parking: Assigned, Covered - 1, Guest, Open - 1	Frontage:	

Zoning: 05 - R-5 Residential District

View: Garden, Mountain, Ocean

Public Remarks: Aloha and welcome to our 2-story townhome in remotely located Lakeview! This 3br / 2ba corner end unit features a well-sought layout, a breezy wrap around lanai, two assigned parking stalls and plenty of storage space. The kitchen opens up to a grand living area with glass sliders that expand to a 250+ sqft porch that is overlooking the beauty of Enchanted Lakes and the ocean in distance. Two bedrooms and a full bathroom are on ground level including washer/dryer. Primary suite is upstairs with large closet and broad panoramic view. Pet-friendly Lakeview is a hidden gem that is situated in lush, serene environment and boasts top location. **Sale Conditions:** None **Schools:** , , * [Request Showing](#), [Photos](#), [History](#), [Maps](#), [Deed](#), [Watch List](#), [Tax Info](#)





Address	Price	Bd & Bth	Living / Avg.	Land Avg.	DOM
1130A Akipohe Street 16A	\$835,000	3 & 2/0	1,355 \$616	391,474 \$2	5

Address	Tax Maint. Ass.	Assessed Land	Assessed Building	Assessed Total	Ratio	Year & Remodeled
1130A Akipohe Street 16A	\$237 \$1,124 \$0	\$165,000	\$648,300	\$813,300	103%	1980 & NA

[1130A Akipohe Street 16A](#) - MLS#: [202414647](#) - Aloha and welcome to our 2-story townhome in remotely located Lakeview! This 3br / 2ba corner end unit features a well-sought layout, a breezy wrap around lanai, two assigned parking stalls and plenty of storage space. The kitchen opens up to a grand living area with glass sliders that expand to a 250+ sqft porch that is overlooking the beauty of Enchanted Lakes and the ocean in distance. Two bedrooms and a full bathroom are on ground level including washer/dryer. Primary suite is upstairs with large closet and broad panoramic view. Pet-friendly Lakeview is a hidden gem that is situated in lush, serene environment and boasts top location. **Region:** Kailua **Neighborhood:** Enchanted Lake **Condition:** Above Average **Parking:** Assigned, Covered - 1, Guest, Open - 1 **Total Parking:** 2 **View:** Garden, Mountain, Ocean **Frontage:** **Pool:** **Zoning:** 05 - R-5 Residential District **Sale Conditions:** None **Schools:** , , * [Request Showing, Photos, History, Maps, Deed, Watch List, Tax Info](#)

DOM = Days on Market