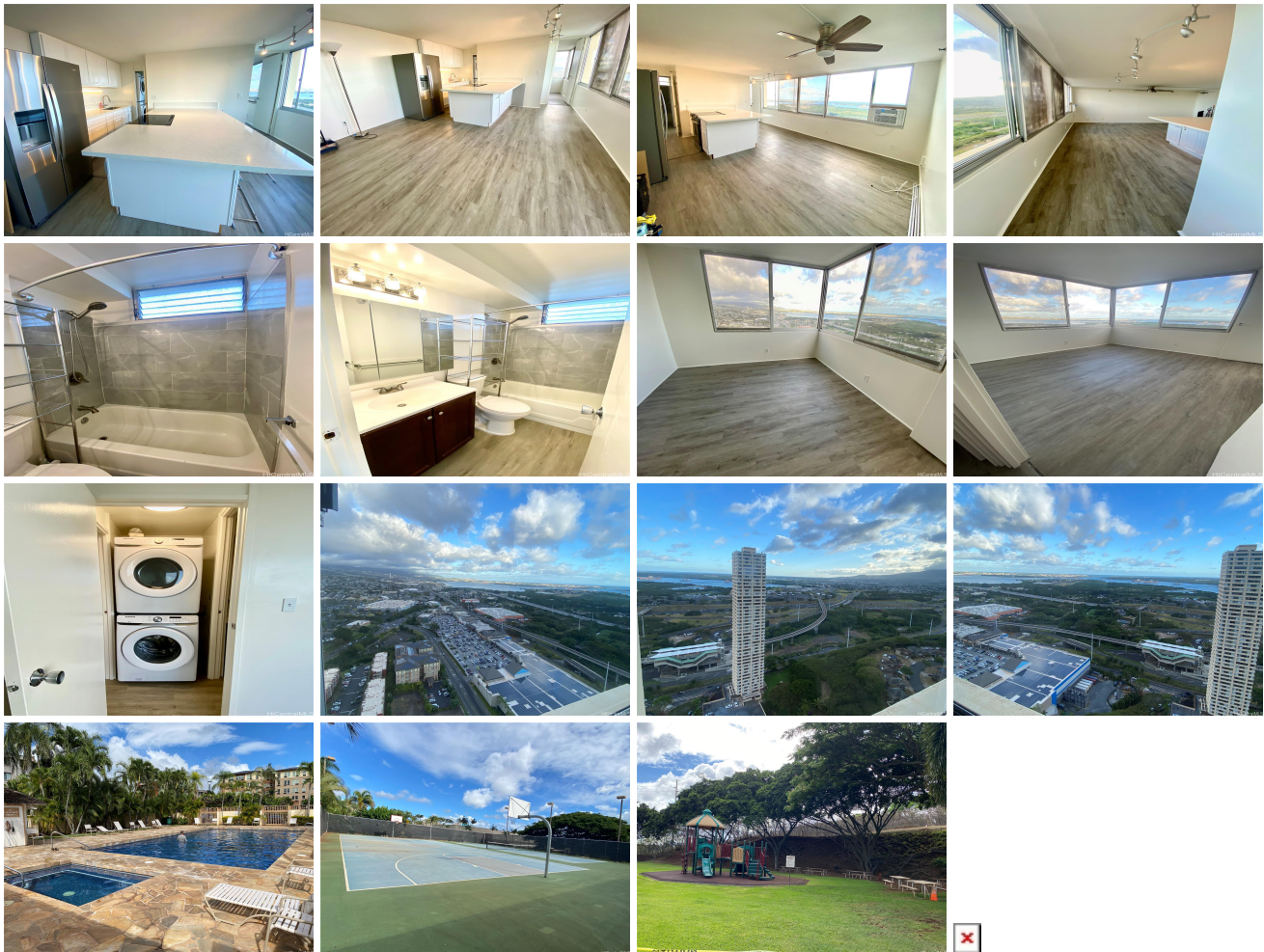


Century Park Plaza 1060 Kamehameha Highway Unit 3903B, Pearl City 96782 * Century

Park Plaza * \$370,000

Beds: 1	MLS#: 202414674, FS	Year Built: 1984
Bath: 1/0	Status: Active Under Contract	Remodeled: 2022
Living Sq. Ft.: 515	List Date & DOM: 06-20-2024 & 12	Total Parking: 1
Land Sq. Ft.: 214,620	Condition: Above Average	Assessed Value
Lanai Sq. Ft.: 0	Frontage:	Building: \$275,800
Sq. Ft. Other: 0	Tax/Year: \$95/2023	Land: \$49,800
Total Sq. Ft. 515	Neighborhood: Manana	Total: \$325,600
Maint./Assoc. \$549 / \$0	Flood Zone : Zone X - Tool	Stories / CPR: 21+ / No
Parking: Assigned, Covered - 1, Guest, Secured Entry	Frontage:	
Zoning : 12 - A-2 Medium Density Apartme	View: City, Mountain, Ocean	

Public Remarks: Welcome to this meticulously maintained 1-bedroom, 1-bath condo that embodies modern elegance. Perfect for first-time homebuyers or investors, renovated in 2022, this home features a spacious layout highlighted by a large kitchen island offering ample storage and adorned with sleek quartz countertops. The kitchen seamlessly flows into the living area, enhanced by pristine laminate flooring that exudes contemporary charm throughout. The bedroom provides a tranquil retreat with generous natural light, complemented by a stylishly updated bathroom featuring modern fixtures and finishes. this condo boasts a prime location within walking distance to Sam's Club, Walmart, Regal Theater, 24 Hour Fitness, Pearl City Highland Shopping Center, and more. Enjoy the convenience of being near Waikale Premium Outlets, Pearl Harbor, and easy freeway access. Amenities include: On-site Resident Manager, 24-Hour Security, Swimming Pool, Basketball/Tennis Court, BBQ Facilities, Playground, and many guest parkings. **Sale Conditions:** None **Schools:** [Manana](#), [Highlands](#), [Pearl City](#) * [Request Showing](#), [Photos](#), [History](#), [Maps](#), [Deed](#), [Watch List](#), [Tax Info](#)



Address	Price	Bd & Bth	Living / Avg.	Land Avg.	Lanai	Occ.	FL	DOM
1060 Kamehameha Highway 3903B	\$370,000	1 & 1/0	515 \$718	214,620 \$2	0	30%	39	12

Address	Tax Maint. Ass.	Assessed Land	Assessed Building	Assessed Total	Ratio	Year & Remodeled
1060 Kamehameha Highway 3903B	\$95 \$549 \$0	\$49,800	\$275,800	\$325,600	114%	1984 & 2022

[1060 Kamehameha Highway 3903B](#) - MLS#: [202414674](#) - Welcome to this meticulously maintained 1-bedroom, 1-bath condo that embodies modern elegance. Perfect for first-time homebuyers or investors, renovated in 2022, this home features a spacious layout highlighted by a large kitchen island offering ample storage and adorned with sleek quartz countertops. The kitchen seamlessly flows into the living area, enhanced by pristine laminate flooring that exudes contemporary charm throughout. The bedroom provides a tranquil retreat with generous natural light, complemented by a stylishly updated bathroom featuring modern fixtures and finishes. this condo boasts a prime location within walking distance to Sam's Club, Walmart, Regal Theater, 24 Hour Fitness, Pearl City Highland Shopping Center, and more. Enjoy the convenience of being near Waikale Premium Outlets, Pearl Harbor, and easy freeway access. Amenities include: On-site Resident Manager, 24-Hour Security, Swimming Pool, Basketball/Tennis Court, BBQ Facilities, Playground, and many guest parkings. **Region:** Pearl City **Neighborhood:** Manana **Condition:** Above Average **Parking:** Assigned, Covered - 1, Guest, Secured Entry **Total Parking:** 1 **View:** City, Mountain, Ocean **Frontage:** **Pool:** **Zoning:** 12 - A-2 Medium Density Apartme **Sale Conditions:** None **Schools:** [Manana](#), [Highlands](#), [Pearl City](#) * [Request Showing](#), [Photos](#), [History](#), [Maps](#), [Deed](#), [Watch List](#), [Tax Info](#)

DOM = Days on Market, Occ. = Occupancy, FL = Floor Number