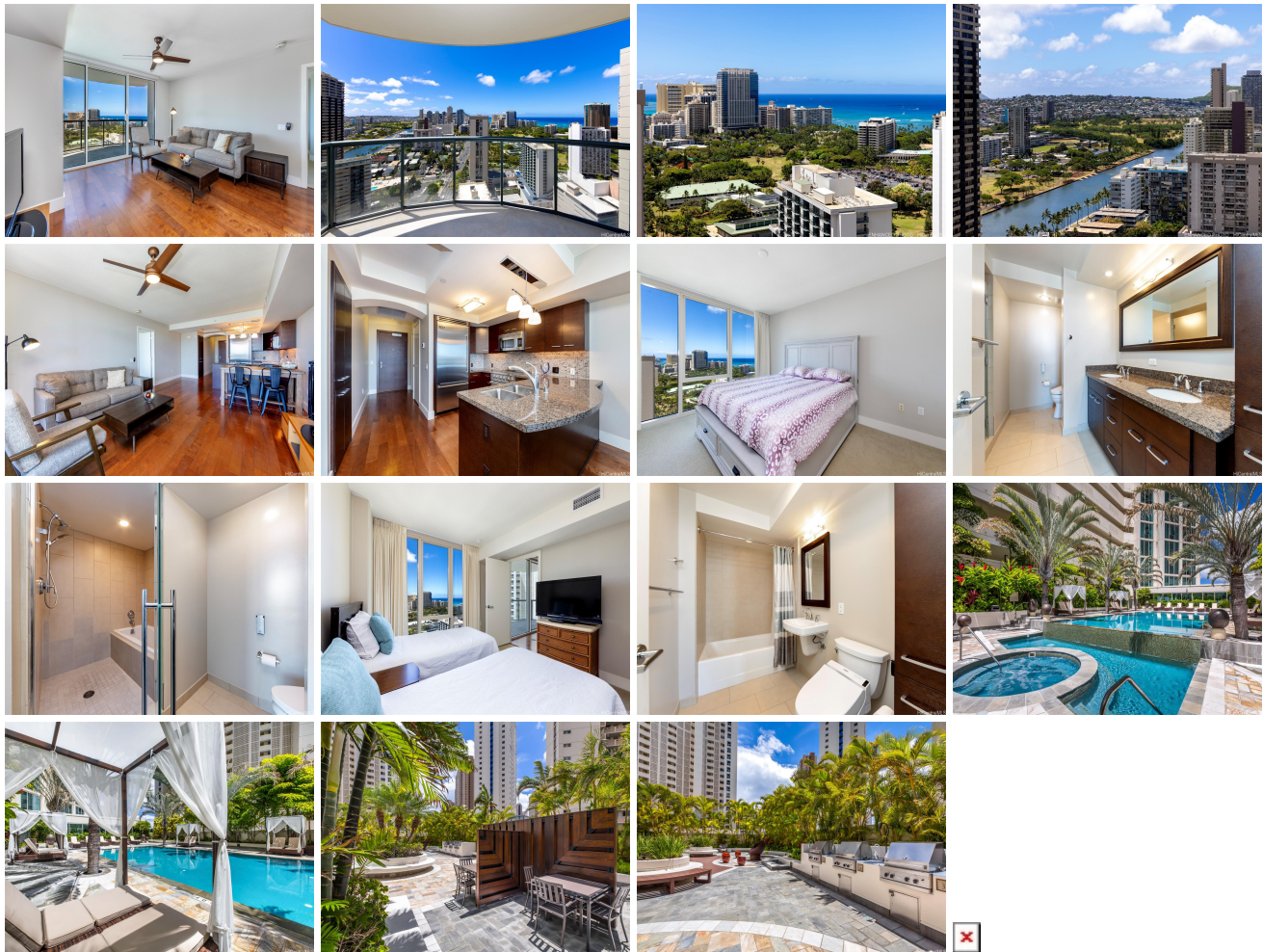


**Allure Waikiki 1837 Kalakaua Avenue Unit 2803, Honolulu 96815 \* Allure Waikiki \***

**\$1,325,000**

Beds: <b>2</b> Bath: <b>2/0</b> Living Sq. Ft.: <b>1,057</b> Land Sq. Ft.: <b>0</b> Lanai Sq. Ft.: <b>88</b> Sq. Ft. Other: <b>0</b> Total Sq. Ft. <b>1,145</b> Maint./Assoc. <b>\$1,132 / \$0</b> Parking: <b>Assigned, Covered - 2</b> Zoning: <b>X6 - Resort Mixed Use Precinct</b>	MLS#: <b>202414688, FS</b> Status: <b>Active</b> List Date & DOM: <b>06-21-2024 &amp; 8</b> Condition: <b>Excellent</b> Frontage: Tax/Year: <b>\$451/2023</b> Neighborhood: <b>Waikiki</b> Flood Zone: <b>Zone AO - Tool</b>	Year Built: <b>2009</b> Remodeled: Total Parking: <b>2</b> <a href="#">Assessed Value</a> Building: <b>\$1,090,900</b> Land: <b>\$32,600</b> Total: <b>\$1,123,500</b> Stories / CPR: <b>21+ / No</b> Frontage: View: <b>City, Diamond Head</b>
---	---	--

**Public Remarks:** Allure Waikiki stands as one of Waikiki's most established luxury condominium residences. With its modern design and resort-style amenities, this icon in Honolulu is one you don't want to miss. This 28th-floor unit features a spacious 2 bedroom, 2 bath floor plan, facing east with stunning views of the Pacific Ocean, DeRussy Park, Ala Wai Canal, Waikiki, and partial Diamond Head vistas from the primary living area and both bedroom suites. The primary suite offers a true resort experience with stunning views of paradise, a walk-in closet, ensuite bathroom with double vanity and walk-in shower room with a separate soaking tub. This superb location at the entrance of Waikiki puts dining, shopping, entertainment, beaches, and water sports within blocks. Welcome home to a lifestyle of luxury at Allure Waikiki #2803. Photos include enhanced, virtually staged and zoomed-in photos. **Sale Conditions:** None **Schools:** , , \* [Request Showing](#), [Photos](#), [History](#), [Maps](#), [Deed](#), [Watch List](#), [Tax Info](#)



Address	Price	Bd & Bth	Living / Avg.	Land   Avg.	Lanai	Occ.	FL	DOM
<a href="#">1837 Kalakaua Avenue 2803</a>	<a href="#">\$1,325,000</a>	2 & 2/0	1,057   \$1,254	0   \$inf	88	43%	28	8

Address	Tax   Maint.   Ass.	Assessed Land	Assessed Building	Assessed Total	Ratio	Year & Remodeled
<a href="#">1837 Kalakaua Avenue 2803</a>	\$451   \$1,132   \$0	\$32,600	\$1,090,900	\$1,123,500	118%	2009 & NA

[1837 Kalakaua Avenue 2803](#) - MLS#: [202414688](#) - Allure Waikiki stands as one of Waikiki's most established luxury condominium residences. With its modern design and resort-style amenities, this icon in Honolulu is one you don't want to miss. This 28th-floor unit features a spacious 2 bedroom, 2 bath floor plan, facing east with stunning views of the Pacific Ocean, DeRussy Park, Ala Wai Canal, Waikiki, and partial Diamond Head vistas from the primary living area and both bedroom suites. The primary suite offers a true resort experience with stunning views of paradise, a walk-in closet, ensuite bathroom with double vanity and walk-in shower room with a separate soaking tub. This superb location at the entrance of Waikiki puts dining, shopping, entertainment, beaches, and water sports within blocks. Welcome home to a lifestyle of luxury at Allure Waikiki #2803. Photos include enhanced, virtually staged and zoomed-in photos. **Region:** Metro **Neighborhood:** Waikiki **Condition:** Excellent **Parking:** Assigned, Covered - 2 **Total Parking:** 2 **View:** City, Diamond Head **Frontage:** Pool **Zoning:** X6 - Resort Mixed Use Precinct **Sale Conditions:** None **Schools:** , , \* [Request Showing](#), [Photos](#), [History](#), [Maps](#), [Deed](#), [Watch List](#), [Tax Info](#)

DOM = Days on Market, Occ. = Occupancy, FL = Floor Number