

55-428 Moana Street, Laie 96762 * \$1,899,900

Beds: 7
 Bath: 8/0
 Living Sq. Ft.: 3,549
 Land Sq. Ft.: 9,450
 Lanai Sq. Ft.: 466
 Sq. Ft. Other: 0
 Total Sq. Ft. 4,015
 Maint./Assoc. \$0 / \$0

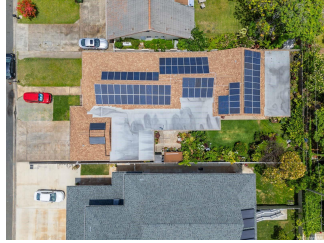
MLS#: **202414708, FS**
 Status: **Active**
 List Date & DOM: **06-22-2024 & 21**
 Condition: **Above Average, Average**
 Frontage: **Other**
 Tax/Year: **\$927/2024**
 Neighborhood: **Laie**
 Flood Zone: **Zone AE - Tool**

Year Built: **1974**
 Remodeled:
 Total Parking: **6**
Assessed Value
 Building: **\$685,600**
 Land: **\$808,600**
 Total: **\$1,494,200**
 Stories / CPR: **One / No**

Parking: **3 Car+, Boat, Driveway, Street**
Zoning: 05 - R-5 Residential District

Frontage: **Other**
 View: **None, Mountain**

Public Remarks: Opportunity awaits with this large multi-generational home in the heart of Laie. Currently accommodating six living spaces, each with interior and exterior access's. Equipped with new (2023) split AC's, 2 laundry areas, 2 water heaters and approx. 6 parking. Comes with a TOTAL of 89 solar panels! (approx. half of the panels are NEM (net energy metering) and the other half NEM Plus and 2 solar water panels). The sizable lot is fully fenced, grassy and equipped with gate codes. Amazing location, approx .5 miles from Brigham Young University, Polynesian Cultural Center, Courtyard Oahu North Shore Hotel and the beach. Close to Foodland, gas station, local eateries, Laie point and so much more! **Sale Conditions:** None **Schools:** , , * [Request Showing](#), [Photos](#), [History](#), [Maps](#), [Deed](#), [Watch List](#), [Tax Info](#)





Address	Price	Bd & Bth	Living / Avg.	Land Avg.	DOM
55-428 Moana Street	\$1,899,900	7 & 8/0	3,549 \$535	9,450 \$201	21

Address	Tax Maint. Ass.	Assessed Land	Assessed Building	Assessed Total	Ratio	Year & Remodeled
55-428 Moana Street	\$927 \$0 \$0	\$808,600	\$685,600	\$1,494,200	127%	1974 & NA

[55-428 Moana Street](#) - MLS#: [202414708](#) - Opportunity awaits with this large multi-generational home in the heart of Laie. Currently accommodating six living spaces, each with interior and exterior access's. Equipped with new (2023) split AC's, 2 laundry areas, 2 water heaters and approx. 6 parking. Comes with a TOTAL of 89 solar panels! (approx. half of the panels are NEM (net energy metering) and the other half NEM Plus and 2 solar water panels). The sizable lot is fully fenced, grassy and equipped with gate codes. Amazing location, approx .5 miles from Brigham Young University, Polynesian Cultural Center, Courtyard Oahu North Shore Hotel and the beach. Close to Foodland, gas station, local eateries, Laie point and so much more! **Region:** North Shore **Neighborhood:** Laie **Condition:** Above Average, Average **Parking:** 3 Car+, Boat, Driveway, Street **Total Parking:** 6 **View:** None, Mountain **Frontage:** Other **Pool:** None **Zoning:** 05 - R-5 Residential District **Sale Conditions:** None **Schools:** , , * [Request Showing](#), [Photos](#), [History](#), [Maps](#), [Deed](#), [Watch List](#), [Tax Info](#)

DOM = Days on Market