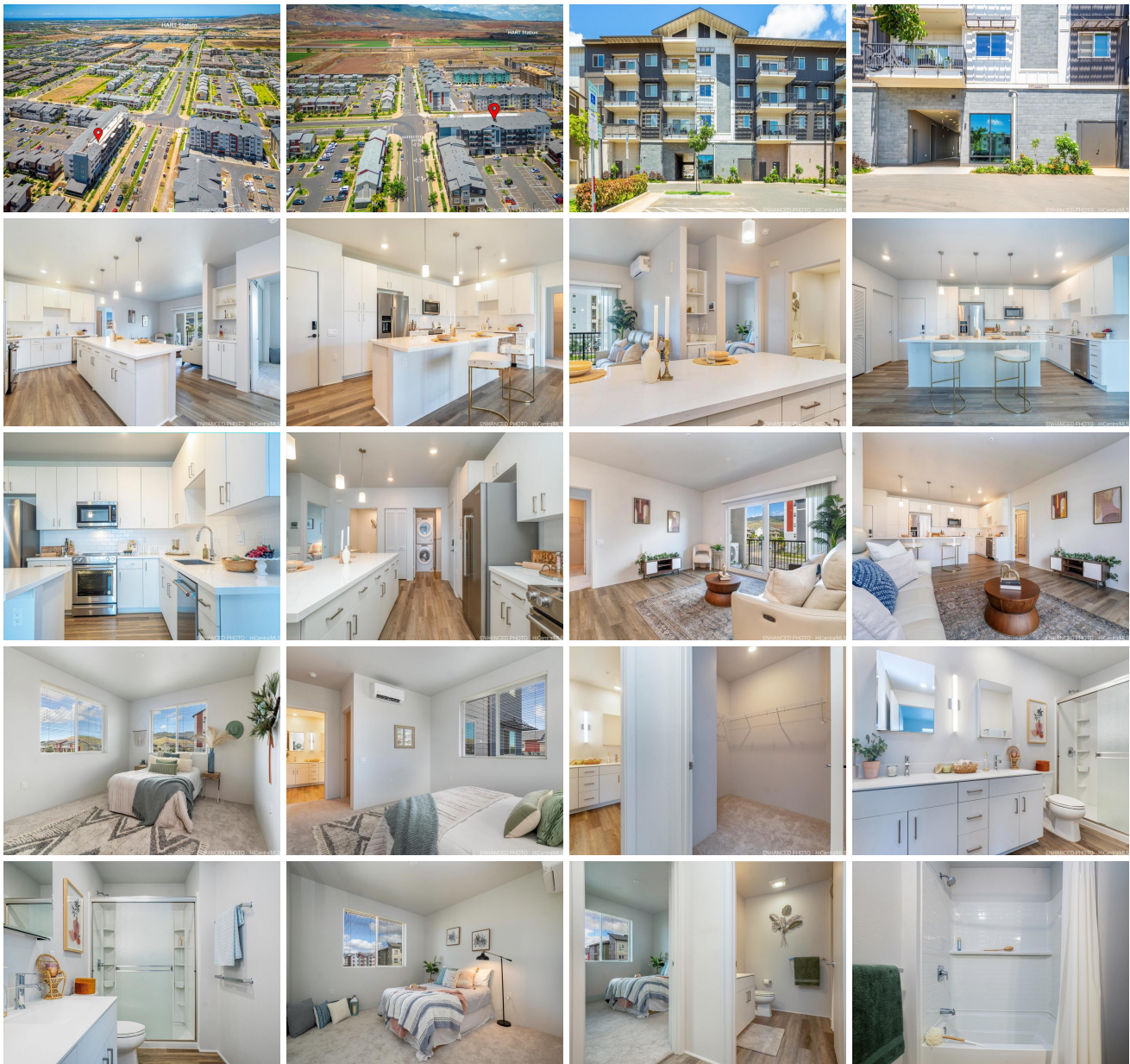


**Kaikea at Hoopili 91-3575 Iwikuamoo Street Unit 9110, Ewa Beach 96706 \* Kaikea at Hoopili \* \$650,000 \* Originally \$678,000**

Beds: <b>2</b>	MLS#: <b>202414734, FS</b>	Year Built: <b>2022</b>
Bath: <b>2/0</b>	Status: <b>Active</b>	Remodeled:
Living Sq. Ft.: <b>1,066</b>	List Date & DOM: <b>06-24-2024 &amp; 22</b>	Total Parking: <b>2</b>
Land Sq. Ft.: <b>0</b>	Condition: <b>Excellent</b>	<a href="#">Assessed Value</a>
Lanai Sq. Ft.: <b>89</b>	Frontage: <b>Other</b>	Building: <b>\$411,500</b>
Sq. Ft. Other: <b>0</b>	Tax/Year: <b>\$168/2023</b>	Land: <b>\$164,300</b>
Total Sq. Ft. <b>1,155</b>	Neighborhood: <b>Hoopili-iliahi</b>	Total: <b>\$575,800</b>
Maint./Assoc. <b>\$421 / \$78</b>	<a href="#">Flood Zone</a> : <b>Zone D - Tool</b>	Stories / CPR: <b>Three+ / No</b>
Parking: <b>Assigned, Guest, Open - 2</b>	Frontage: <b>Other</b>	
<a href="#">Zoning</a> : <b>17 - AMX-2 Medium Density Apt M</b>	View: <b>None, Mountain</b>	

**Public Remarks:** The property in Kaikea at Hoopili is truly a gem! This sought-after B-2 model boasts stunning finishes, including LG Viterra White Quartz Countertops and luxury vinyl plank flooring in the living room and kitchen. The spacious bedrooms each have their own split A/C system and plush carpet flooring. The en-suite is a highlight with a large spacious closet, dual vanity sinks, and ample counter space. The open living room features its own split A/C and leads to a spacious lanai with breathtaking views of the Makakilo Mountain range, Sunset, and Makakilo -facing views. The building is secure with a call box for privacy. Hoopili offers a vibrant community with amenities like the Soho Community Pool, Dog Parks, and local boutiques. Don't miss this opportunity to own in this desirable community! **Sale Conditions:** None **Schools:** , , \* [Request Showing, Photos, History, Maps, Deed, Watch List, Tax Info](#)





Address	Price	Bd & Bth	Living / Avg.	Land   Avg.	Lanai	Occ.	FL	DOM
<a href="#">91-3575 Iwikuamoo Street 9110</a>	<b>\$650,000</b>	2 & 2/0	1,066   \$610	0   \$inf	89	76%	1	22

Address	Tax   Maint.   Ass.	Assessed Land	Assessed Building	Assessed Total	Ratio	Year & Remodeled
<a href="#">91-3575 Iwikuamoo Street 9110</a>	\$168   \$421   \$78	\$164,300	\$411,500	\$575,800	113%	2022 & NA

[91-3575 Iwikuamoo Street 9110](#) - MLS#: [202414734](#) - Original price was \$678,000 - The property in Kaieka at Hoopili is truly a gem! This sought-after B-2 model boasts stunning finishes, including LG Viterra White Quartz Countertops and luxury vinyl plank flooring in the living room and kitchen. The spacious bedrooms each have their own split A/C system and plush carpet flooring. The en-suite is a highlight with a large spacious closet, dual vanity sinks, and ample counter space. The open living room features its own split A/C and leads to a spacious lanai with breathtaking views of the Makakilo Mountain range, Sunset, and Makakilo -facing views. The building is secure with a call box for privacy. Hoopili offers a vibrant community with amenities like the Soho Community Pool, Dog Parks, and local boutiques. Don't miss this opportunity to own in this desirable community! **Region:** Ewa Plain **Neighborhood:** Hoopili-iliahi **Condition:** Excellent **Parking:** Assigned, Guest, Open - 2 **Total Parking:** 2 **View:** None, Mountain **Frontage:** Other **Pool:** **Zoning:** 17 - AMX-2 Medium Density Apt M **Sale Conditions:** None **Schools:** , , \* [Request Showing](#), [Photos](#), [History](#), [Maps](#), [Deed](#), [Watch List](#), [Tax Info](#)

DOM = Days on Market, Occ. = Occupancy, FL = Floor Number