

Fairway Villa 2345 Ala Wai Boulevard Unit 1113, Honolulu 96815 * \$322,000 * Originally

\$325,000

Beds: **0**
 Bath: **1/0**
 Living Sq. Ft.: **364**
 Land Sq. Ft.: **37,810**
 Lanai Sq. Ft.: **77**
 Sq. Ft. Other: **0**
 Total Sq. Ft. **441**
 Maint./Assoc. **\$581 / \$0**

MLS#: **202414765, FS**
 Status: **Active**
 List Date & DOM: **06-25-2024 & 22**
 Condition: **Average**
 Frontage: **Other**
 Tax/Year: **\$85/2023**
 Neighborhood: **Waikiki**
 Flood Zone: **Zone AE - Tool**

Year Built: **1974**
 Remodeled:
 Total Parking: **1**
[Assessed Value](#)
 Building: **\$262,400**
 Land: **\$28,300**
 Total: **\$290,700**
 Stories / CPR: / **No**

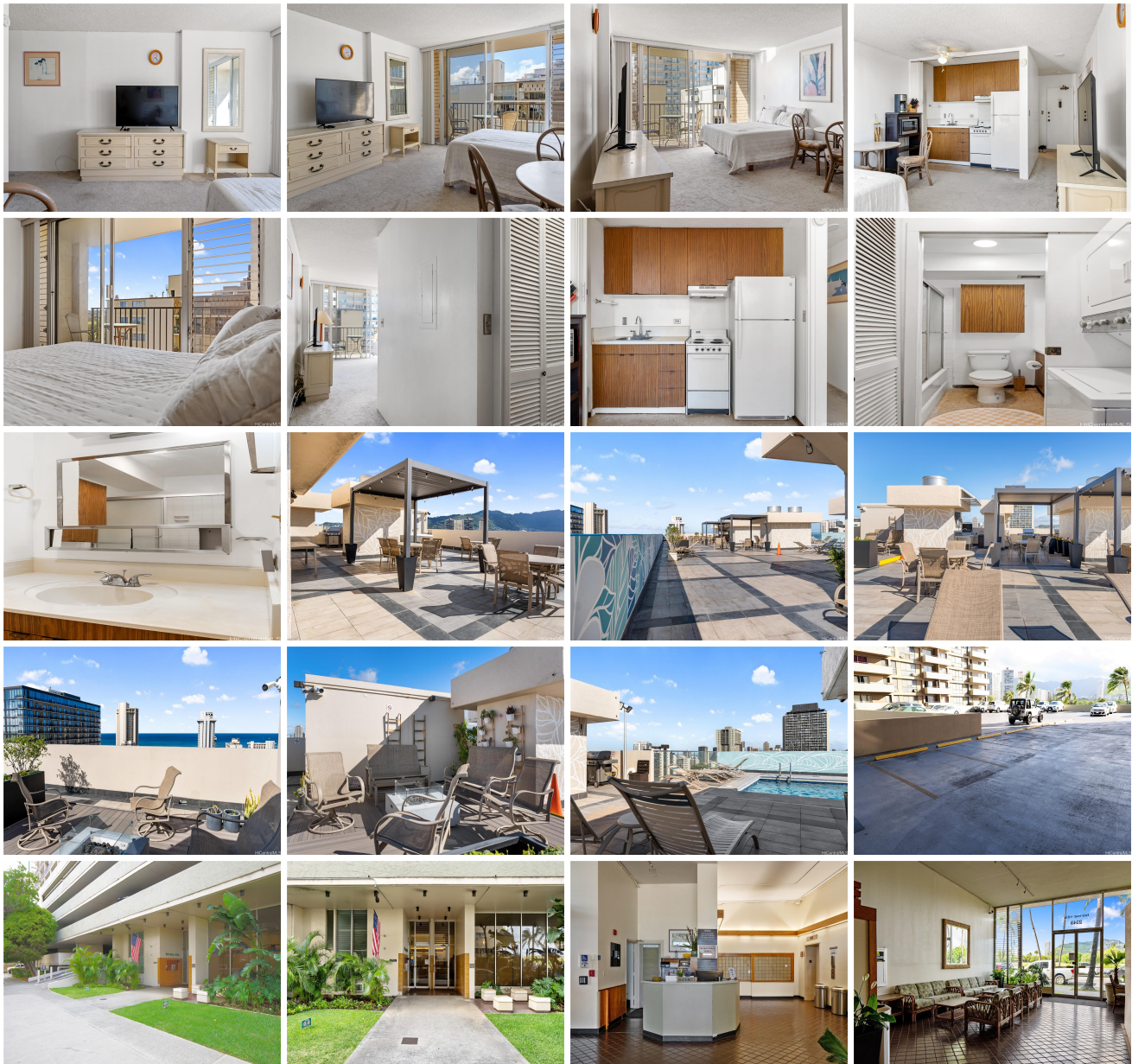
Parking: **Assigned, Open - 1**

Zoning: **X2 - Apartment Precinct**

Frontage: **Other**

View: **City, Marina/Canal, Mountain**

Public Remarks: Don't miss out—come see it now! Currently the most affordable unit in the building, This great starter studio features a full kitchen, a washer/dryer inside the unit, and an assigned parking stall. The spacious open lanai, perfect for relaxing and enjoying views of the golf course, canal, mountains, and vibrant city lights. Maintenance fee includes cable TV, (hot) water, & sewer utilities. Conveniently located just a block away from the International Market Place and a short distance from world-famous Waikiki Beach, shopping centers, boutiques, restaurants, and bus stops. Fairway Villa is a secured residential high-rise features a recently improved rooftop pool deck with a kitchen area with sink, lounge chairs. BBQ cabanas, a hot tub, a sauna, and a fireplace, perfect for entertaining guests while enjoying panoramic views of Diamond Head, Ala Wai, the Ko'olau Mountains, and Waikiki Beach. Ample guest parkings are available on the 6th floor. The building is VA approved and allows minimum 30-day rentals, making it ideal for both personal use and rentals. **Sale Conditions:** None
Schools: , , * [Request Showing](#), [Photos](#), [History](#), [Maps](#), [Deed](#), [Watch List](#), [Tax Info](#)





| Address | Price | Bd & Bth | Living / Avg. | Land Avg. | DOM |
|---|------------------|----------|---------------|--------------|-----|
| 2345 Ala Wai Boulevard 1113 | \$322,000 | 0 & 1/0 | 364 \$885 | 37,810 \$9 | 22 |

| Address | Tax Maint. Ass. | Assessed Land | Assessed Building | Assessed Total | Ratio | Year & Remodeled |
|---|---------------------|---------------|-------------------|----------------|-------|------------------|
| 2345 Ala Wai Boulevard 1113 | \$85 \$581 \$0 | \$28,300 | \$262,400 | \$290,700 | 111% | 1974 & NA |

[2345 Ala Wai Boulevard 1113](#) - MLS#: [202414765](#) - Original price was \$325,000 - Don't miss out—come see it now! Currently the most affordable unit in the building, This great starter studio features a full kitchen, a washer/dryer inside the unit, and an assigned parking stall. The spacious open lanai, perfect for relaxing and enjoying views of the golf course, canal, mountains, and vibrant city lights. Maintenance fee includes cable TV, (hot) water, & sewer utilities. Conveniently located just a block away from the International Market Place and a short distance from world-famous Waikiki Beach, shopping centers, boutiques, restaurants, and bus stops. Fairway Villa is a secured residential high-rise features a recently improved rooftop pool deck with a kitchen area with sink, lounge chairs. BBQ cabanas, a hot tub, a sauna, and a fireplace, perfect for entertaining guests while enjoying panoramic views of Diamond Head, Ala Wai, the Ko'olau Mountains, and Waikiki Beach. Ample guest parkings are available on the 6th floor. The building is VA approved and allows minimum 30-day rentals, making it ideal for both personal use and rentals. **Region:** Metro **Neighborhood:** Waikiki **Condition:** Average **Parking:** Assigned, Open - 1 **Total Parking:** 1 **View:** City, Marina/Canal, Mountain **Frontage:** Other **Pool:** **Zoning:** X2 - Apartment Precinct **Sale Conditions:** None **Schools:** , , * [Request Showing](#), [Photos](#), [History](#), [Maps](#), [Deed](#), [Watch List](#), [Tax Info](#)

DOM = Days on Market