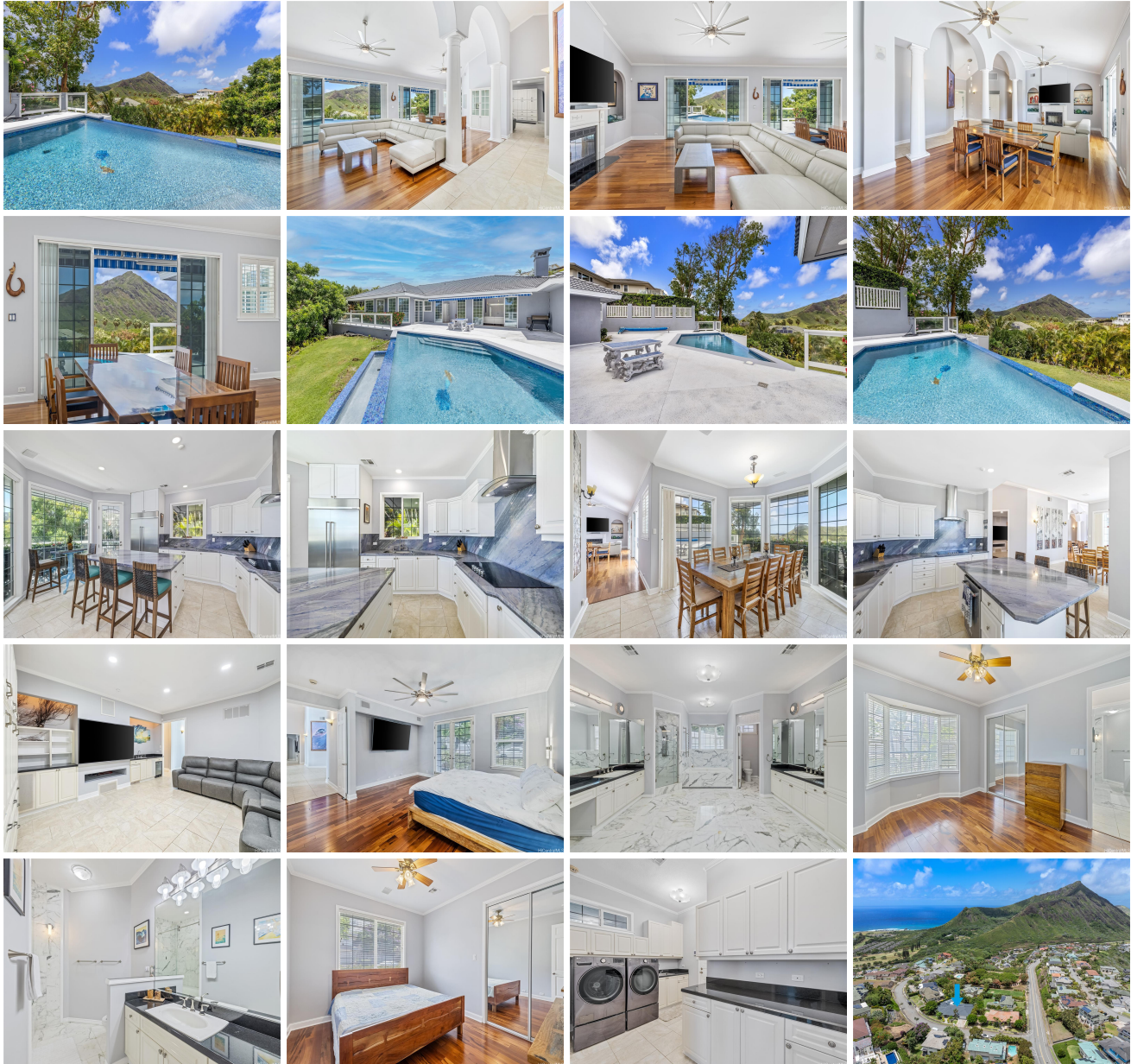


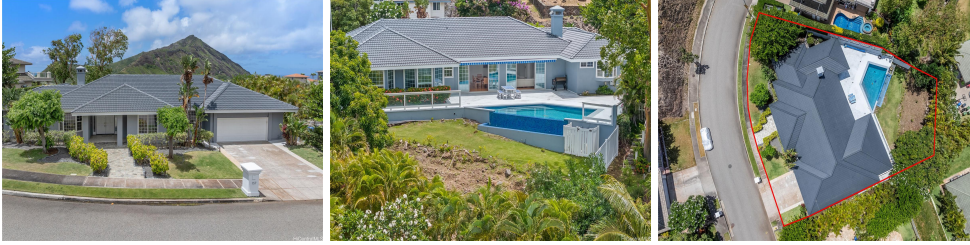
157 Hoolako Place, Honolulu 96825 ** \$2,800,000

Beds: 3	MLS#: <u>202414771</u>, FS	Year Built: 1992
Bath: 3/0	Status: Active	Remodeled: 2023
Living Sq. Ft.: 3,206	List Date & DOM: 07-02-2024 & 1	Total Parking: 2
Land Sq. Ft.: 13,087	Condition: Above Average	Assessed Value
Lanai Sq. Ft.: 0	Frontage: Other	Building: \$1,159,700
Sq. Ft. Other: 0	Tax/Year: \$1,668/2024	Land: \$1,225,900
Total Sq. Ft. 3,206	Neighborhood: Napali Haweo	Total: \$2,385,600
Maint./Assoc. \$0 / \$123	Flood Zone : Zone D - Tool	Stories / CPR: One / No
Parking: 2 Car, Driveway, Garage, Street	Frontage: Other	
Zoning : 03 - R10 - Residential District	View: Garden, Mountain, Ocean	

Public Remarks: Experience premium living in this stunning single level home in Na Pali Haweo, an exclusive community set on the Kamehameha Ridge in Hawaii Kai. This 3-bed, 3-bath gem has just been remodeled, offering a stylish and contemporary living space. Step into an inviting foyer with soaring ceilings and a direct, breathtaking view of Koko Crater. Gorgeous hardwood floors guide you through open-concept living to a gourmet kitchen, complete with new appliances and topped with Blue Granite counters. A true reflection of indoor-outdoor living with an expansive deck and infinity salt-water pool, perfect for leisure and entertaining. Cozy media room with built-in wet bar, wine chiller and smart tech surround sound system. Enjoy a secluded primary bedroom and ensuite bath with dual showers, walk-in-closets, heated towel bars and a jacuzzi tub. Additional features include Office, 2-Car Garage with Tool Workshop, EV Charger, Digital Alarm System, (2) Tankless Water Heaters, and Neighborhood Community Patrol. Prime location offers close proximity to Costco, Safeway, and Hawaii Kai shops and eateries. Variety of outdoor activities nearby, such as hikes, great beaches, boating, fishing and surfing.

Sale Conditions: None **Schools:** [Koko Head](#), [Niu Valley](#), [Kaiser](#) * [Request Showing](#), [Photos](#), [History](#), [Maps](#), [Deed](#), [Watch List](#), [Tax Info](#)





Address	Price	Bd & Bth	Living / Avg.	Land Avg.	Lanai	Occ.	FL	DOM
157 Hoolako Place	\$2,800,000	3 & 3/0	3,206 \$873	13,087 \$214	0	0%	0	1

Address	Tax Maint. Ass.	Assessed Land	Assessed Building	Assessed Total	Ratio	Year & Remodeled
157 Hoolako Place	\$1,668 \$0 \$123	\$1,225,900	\$1,159,700	\$2,385,600	117%	1992 & 2023

[157 Hoolako Place](#) - MLS#: [202414771](#) - Experience premium living in this stunning single level home in Na Pali Haweo, an exclusive community set on the Kamehameha Ridge in Hawaii Kai. This 3-bed, 3-bath gem has just been remodeled, offering a stylish and contemporary living space. Step into an inviting foyer with soaring ceilings and a direct, breathtaking view of Koko Crater. Gorgeous hardwood floors guide you through open-concept living to a gourmet kitchen, complete with new appliances and topped with Blue Granite counters. A true reflection of indoor-outdoor living with an expansive deck and infinity salt-water pool, perfect for leisure and entertaining. Cozy media room with built-in wet bar, wine chiller and smart tech surround sound system. Enjoy a secluded primary bedroom and ensuite bath with dual showers, walk-in-closets, heated towel bars and a jacuzzi tub. Additional features include Office, 2-Car Garage with Tool Workshop, EV Charger, Digital Alarm System, (2) Tankless Water Heaters, and Neighborhood Community Patrol. Prime location offers close proximity to Costco, Safeway, and Hawaii Kai shops and eateries. Variety of outdoor activities nearby, such as hikes, great beaches, boating, fishing and surfing. **Region:** Hawaii Kai **Neighborhood:** Napali Haweo **Condition:** Above Average **Parking:** 2 Car, Driveway, Garage, Street **Total Parking:** 2 **View:** Garden, Mountain, Ocean **Frontage:** Other **Pool:** In Ground **Zoning:** 03 - R10 - Residential District **Sale Conditions:** None **Schools:** [Koko Head](#), [Niu Valley](#), [Kaiser](#) * [Request Showing](#), [Photos](#), [History](#), [Maps](#), [Deed](#), [Watch List](#), [Tax Info](#)

DOM = Days on Market, Occ. = Occupancy, FL = Floor Number