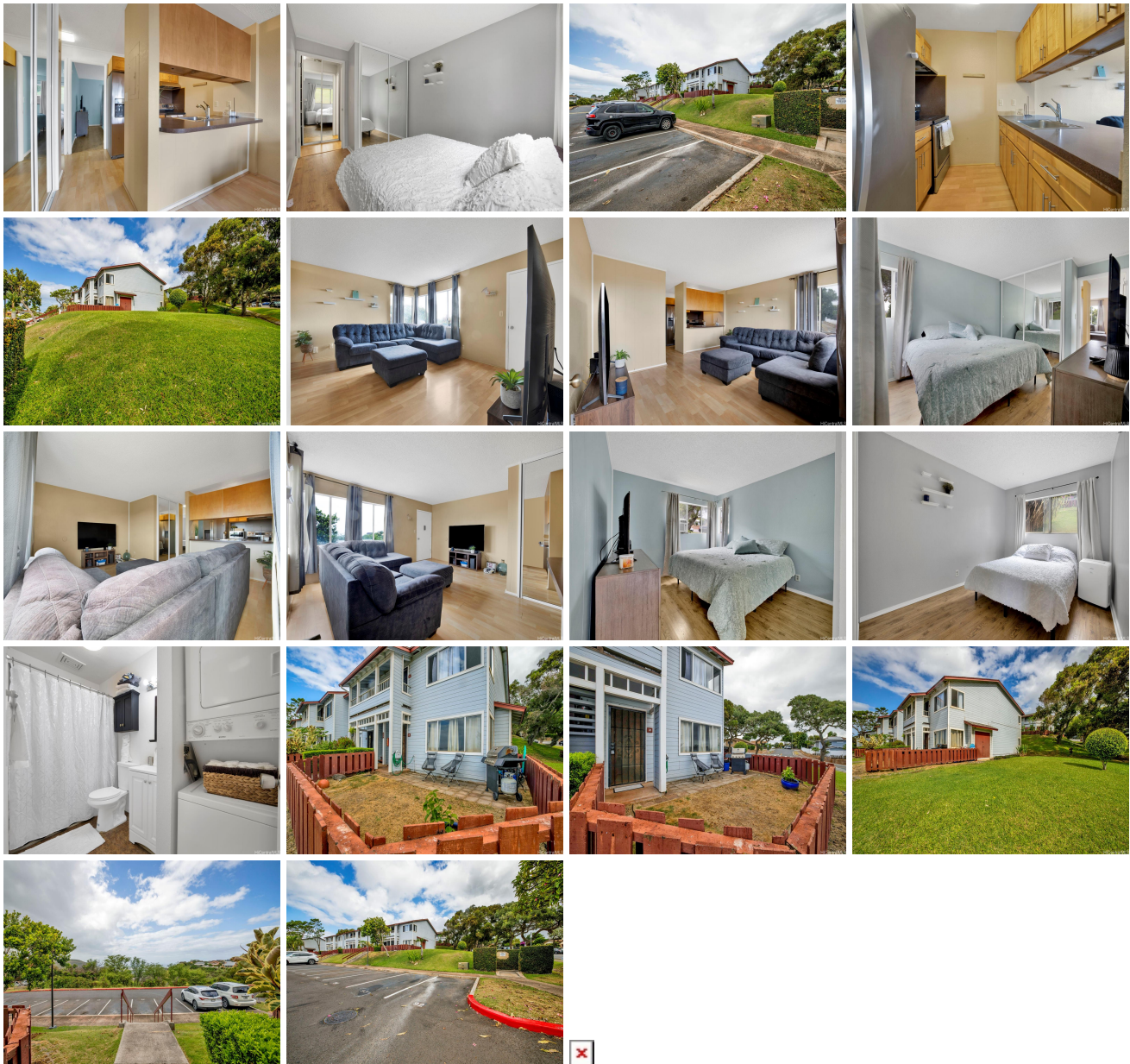


## Palehua Nani 92-1260 Makakilo Drive Unit 70, Kapolei 96707 \* Palehua Nani \* \$450,000

Beds: <b>2</b>	MLS#: <b>202414778, FS</b>	Year Built: <b>1988</b>
Bath: <b>1/0</b>	Status: <b>Active</b>	Remodeled:
Living Sq. Ft.: <b>638</b>	List Date & DOM: <b>07-10-2024 &amp; 3</b>	Total Parking: <b>1</b>
Land Sq. Ft.: <b>64,077</b>	Condition: <b>Above Average</b>	<a href="#">Assessed Value</a>
Lanai Sq. Ft.: <b>0</b>	Frontage:	Building: <b>\$243,200</b>
Sq. Ft. Other: <b>0</b>	Tax/Year: <b>\$56/2023</b>	Land: <b>\$148,900</b>
Total Sq. Ft. <b>638</b>	Neighborhood: <b>Makakilo-upper</b>	Total: <b>\$392,100</b>
Maint./Assoc. <b>\$398 / \$0</b>	<a href="#">Flood Zone</a> : <b>Zone D - Tool</b>	Stories / CPR: / <b>No</b>
Parking: <b>Open - 1, Street</b>	Frontage:	
<a href="#">Zoning</a> : <b>11 - A-1 Low Density Apartment</b>	View: <b>Ocean</b>	

**Public Remarks:** Rare GROUND FLOOR CORNER unit with a private yard. This two-bedroom condo offers a perfect blend of modern comfort and island tranquility nestled in a breezy location. Both bedrooms are generously sized, with window views of the lush surroundings and cool island breeze. Step outside into your private yard, overlooking lower Makakilo and oceans views that provide a serene backdrop, this outdoor space is perfect for enjoying Hawaii's beautiful weather year-round. Located in upper Makakilo, you'll enjoy a quiet neighborhood with easy access to local amenities and outdoor activities. Don't miss out on the opportunity to call this incredible condo your home. Schedule a showing today and discover the perfect blend of comfort, convenience, and island living in upper Makakilo! **Sale Conditions:** None **Schools:** , \* [Request Showing](#), [Photos](#), [History](#), [Maps](#), [Deed](#), [Watch List](#), [Tax Info](#)



Address	Price	Bd & Bth	Living / Avg.	Land   Avg.	Lanai	Occ.	FL	DOM
---------	-------	----------	---------------	-------------	-------	------	----	-----

<a href="#">92-1260 Makakilo Drive 70</a>	<a href="#">\$450,000</a>	2 & 1/0	638   \$705	64,077   \$7	0	51%	1	3
---	---------------------------	---------	-------------	--------------	---	-----	---	---

Address	Tax   Maint.   Ass.	Assessed Land	Assessed Building	Assessed Total	Ratio	Year & Remodeled
<a href="#">92-1260 Makakilo Drive 70</a>	\$56   \$398   \$0	\$148,900	\$243,200	\$392,100	115%	1988 & NA

<p><a href="#">92-1260 Makakilo Drive 70</a> - MLS#: <a href="#">202414778</a> - Rare GROUND FLOOR CORNER unit with a private yard. This two-bedroom condo offers a perfect blend of modern comfort and island tranquility nestled in a breezy location. Both bedrooms are generously sized, with window views of the lush surroundings and cool island breeze. Step outside into your private yard, overlooking lower Makakilo and oceans views that provide a serene backdrop, this outdoor space is perfect for enjoying Hawaii's beautiful weather year-round. Located in upper Makakilo, you'll enjoy a quiet neighborhood with easy access to local amenities and outdoor activities. Don't miss out on the opportunity to call this incredible condo your home. Schedule a showing today and discover the perfect blend of comfort, convenience, and island living in upper Makakilo! <b>Region:</b> Makakilo <b>Neighborhood:</b> Makakilo-upper <b>Condition:</b> Above Average <b>Parking:</b> Open - 1, Street <b>Total Parking:</b> 1 <b>View:</b> Ocean <b>Frontage:</b> <b>Pool:</b> <b>Zoning:</b> 11 - A-1 Low Density Apartment <b>Sale Conditions:</b> None <b>Schools:</b> , , * <a href="#">Request Showing</a>, <a href="#">Photos</a>, <a href="#">History</a>, <a href="#">Maps</a>, <a href="#">Deed</a>, <a href="#">Watch List</a>, <a href="#">Tax Info</a></p>						
--	--	--	--	--	--	--

DOM = Days on Market, Occ. = Occupancy, FL = Floor Number