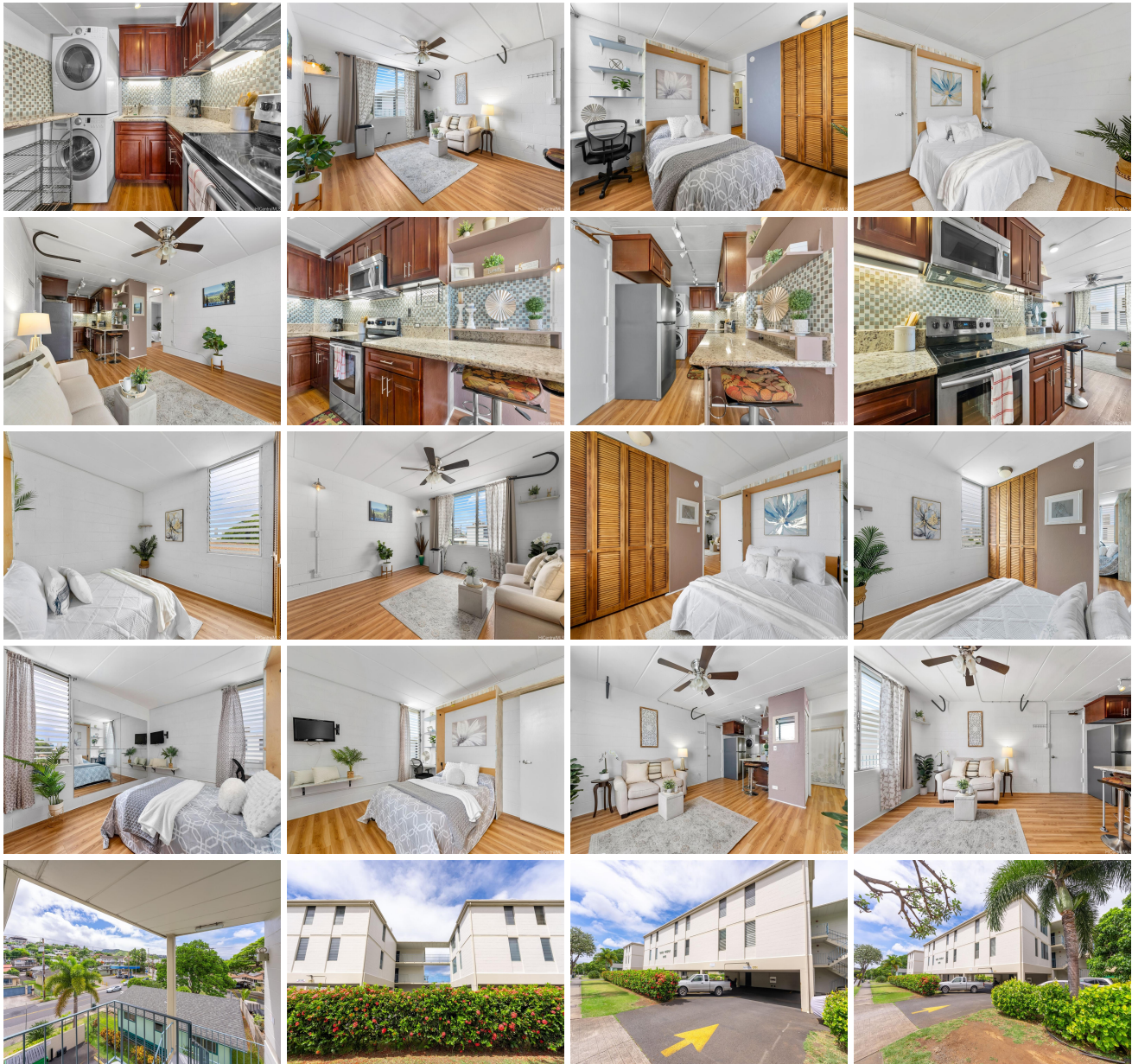


Hale Mahiai 2015 Wilder Avenue Unit 3G, Honolulu 96822 * Hale Mahiai * \$459,000

Beds: 2	MLS#: 202414824, FS	Year Built: 1969
Bath: 1/0	Status: Active Under Contract	Remodeled:
Living Sq. Ft.: 684	List Date & DOM: 07-05-2024 & 6	Total Parking: 1
Land Sq. Ft.: 0	Condition: Above Average	Assessed Value
Lanai Sq. Ft.: 0	Frontage:	Building: \$179,100
Sq. Ft. Other: 0	Tax/Year: \$123/2024	Land: \$233,700
Total Sq. Ft. 684	Neighborhood: Punahou	Total: \$412,800
Maint./Assoc. \$357 / \$0	Flood Zone : Zone X - Tool	Stories / CPR: Three / No
Parking: Assigned, Open - 1	Frontage:	
Zoning : 05 - R-5 Residential District	View: City, Diamond Head	

Public Remarks: Rare find and total GEM! Welcome home to a pet-friendly, turnkey, sparkling, upgraded 2-bedroom, 1-bathroom, 1-parking charming condo unit! Washer + Dryer in-unit. On the top floor, this breezy corner unit offers added privacy and security. The kitchen and bathroom are modern and updated and complemented by vinyl plank flooring and storage closets throughout. Lovingly maintained and freshly painted with a newer tankless water heater. A perfect opportunity for a first-time buyer or investor with very low HOA fees. Both bedrooms have Murphy beds for space efficiency that are included with the purchase. Near to University of Hawaii at Manoa, Punahou School, Maryknoll, Kapiolani Hospital, freeway access, restaurants, shopping, parks, and so much more! You do not want to miss out this rare and special home with everything you've been looking for, this will not last so schedule your showing today! **Sale Conditions:** None **Schools:** [Lunalilo](#), [Washington](#), [Roosevelt](#) * [Request Showing](#), [Photos](#), [History](#), [Maps](#), [Deed](#), [Watch List](#), [Tax Info](#)





Address	Price	Bd & Bth	Living / Avg.	Land Avg.	Lanai	Occ.	FL	DOM
2015 Wilder Avenue 3G	\$459,000	2 & 1/0	684 \$671	0 \$inf	0	60%	3	6

Address	Tax Maint. Ass.	Assessed Land	Assessed Building	Assessed Total	Ratio	Year & Remodeled
2015 Wilder Avenue 3G	\$123 \$357 \$0	\$233,700	\$179,100	\$412,800	111%	1969 & NA

[2015 Wilder Avenue 3G](#) - MLS#: [202414824](#) - Rare find and total GEM! Welcome home to a pet-friendly, turnkey, sparkling, upgraded 2-bedroom, 1-bathroom, 1-parking charming condo unit! Washer + Dryer in-unit. On the top floor, this breezy corner unit offers added privacy and security. The kitchen and bathroom are modern and updated and complemented by vinyl plank flooring and storage closets throughout. Lovingly maintained and freshly painted with a newer tankless water heater. A perfect opportunity for a first-time buyer or investor with very low HOA fees. Both bedrooms have Murphy beds for space efficiency that are included with the purchase. Near to University of Hawaii at Manoa, Punahou School, Maryknoll, Kapiolani Hospital, freeway access, restaurants, shopping, parks, and so much more! You do not want to miss out this rare and special home with everything you've been looking for, this will not last so schedule your showing today! **Region:** Metro **Neighborhood:** Punahou **Condition:** Above Average **Parking:** Assigned, Open - 1 **Total Parking:** 1 **View:** City, Diamond Head **Frontage:** **Pool:** **Zoning:** 05 - R-5 Residential District **Sale Conditions:** None **Schools:** [Lunalilo](#), [Washington](#), [Roosevelt](#) * [Request Showing](#), [Photos](#), [History](#), [Maps](#), [Deed](#), [Watch List](#), [Tax Info](#)

DOM = Days on Market, Occ. = Occupancy, FL = Floor Number