

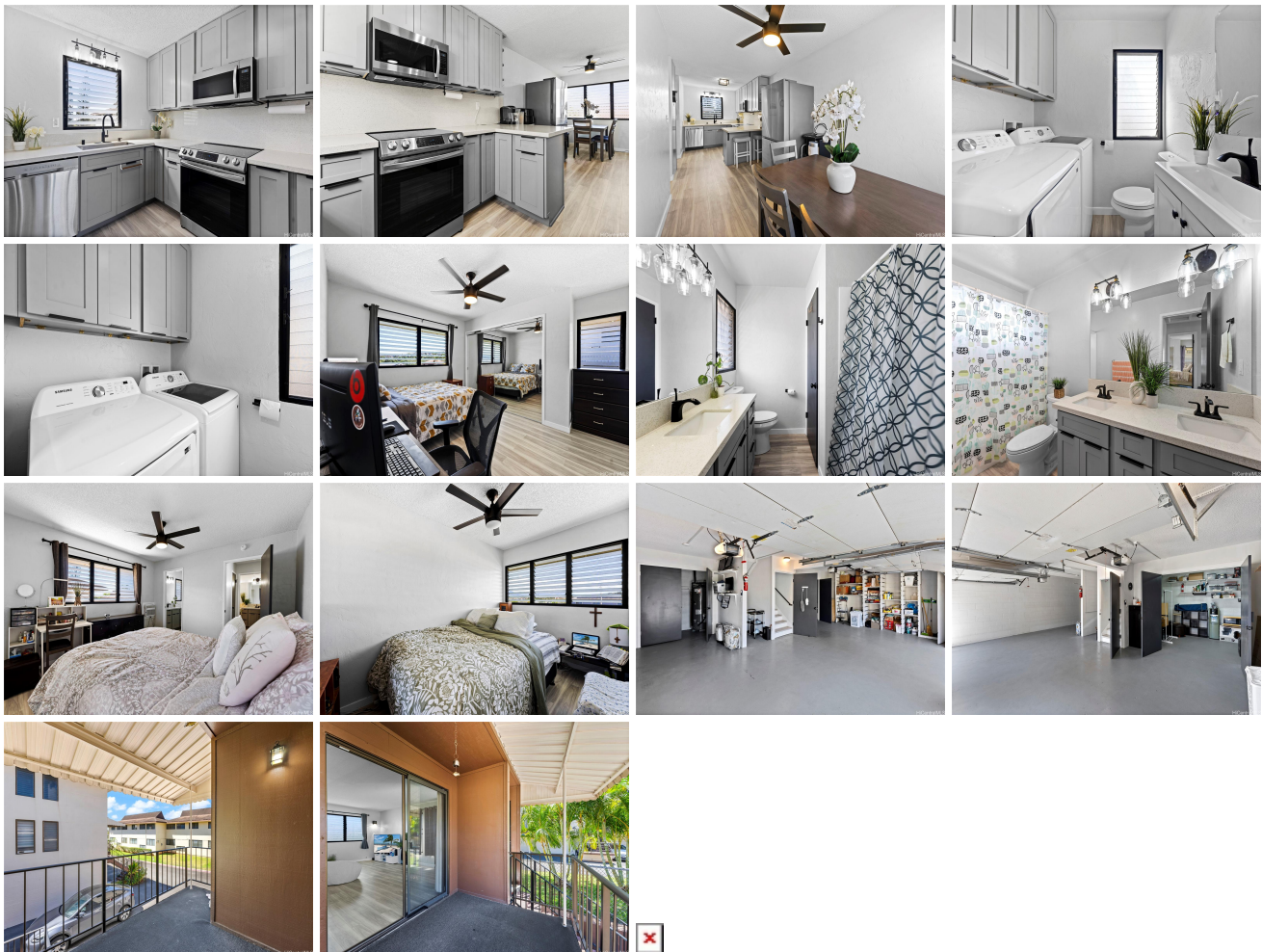
## Tropicana Village-Aiea 98-518 Kaonohi Street Unit 50/2, Aiea 96701 \* \$690,000 \* Originally

**\$699,000**

Beds: <b>3</b>	MLS#: <b>202414845, FS</b>	Year Built: <b>1971</b>
Bath: <b>2/1</b>	Status: <b>Active</b>	Remodeled: <b>2020</b>
Living Sq. Ft.: <b>1,361</b>	List Date & DOM: <b>07-08-2024 &amp; 5</b>	Total Parking: <b>4</b>
Land Sq. Ft.: <b>104,413</b>	Condition: <b>Excellent, Above Average</b>	<a href="#">Assessed Value</a>
Lanai Sq. Ft.: <b>24</b>	Frontage: <b>Other</b>	Building: <b>\$377,200</b>
Sq. Ft. Other: <b>0</b>	Tax/Year: <b>\$204/2023</b>	Land: <b>\$297,600</b>
Total Sq. Ft. <b>1,385</b>	Neighborhood: <b>Pearlridge</b>	Total: <b>\$674,800</b>
Maint./Assoc. <b>\$900 / \$0</b>	<a href="#">Flood Zone</a> : <b>Zone D - Tool</b>	Stories / CPR: <b>Three / No</b>
Parking: <b>Garage, Open - 2</b>	Frontage: <b>Other</b>	
<a href="#">Zoning</a> : <b>11 - A-1 Low Density Apartment</b>	View: <b>None</b>	

**Public Remarks:** Discover the perfect blend of comfort, style, and convenience in this recently updated 3-bedroom, 2.5-bath townhome in the desirable Tropicana Village in Aiea. This spacious residence offers an ideal layout for modern living, complemented by an oversized two-car garage and additional two-car driveway parking. This corner, end unit is in an ideal location, tucked away from the main street and features a spacious lanai perfect for enjoying a morning coffee or evening relaxation. This home is situated in a prime location and offers easy access to Pearl Ridge Center, dining, parks, and schools. Commuters will appreciate the proximity to major highways, making travel to Honolulu and beyond a breeze. **Sale**

**Conditions:** None **Schools:** , , \* [Request Showing](#), [Photos](#), [History](#), [Maps](#), [Deed](#), [Watch List](#), [Tax Info](#)



Address	Price	Bd & Bth	Living / Avg.	Land   Avg.	DOM
<a href="#">98-518 Kaonohi Street 50/2</a>	<b>\$690,000</b>	3 & 2/1	1,361   \$507	104,413   \$7	5

Address	Tax   Maint.   Ass.	Assessed Land	Assessed Building	Assessed Total	Ratio	Year & Remodeled
<a href="#">98-518 Kaonohi Street 50/2</a>	\$204   \$900   \$0	\$297,600	\$377,200	\$674,800	102%	1971 & 2020

[98-518 Kaonohi Street 50/2](#) - MLS#: [202414845](#) - Original price was \$699,000 - Discover the perfect blend of comfort, style, and convenience in this recently updated 3-bedroom, 2.5-bath townhome in the desirable Tropicana Village in Aiea. This spacious residence offers an ideal layout for modern living, complemented by an oversized two-car garage and additional two-car driveway parking. This corner, end unit is in an ideal location, tucked away from the main street and features a spacious lanai perfect for enjoying a morning coffee or evening relaxation. This home is situated in a prime location and offers easy access to Pearl Ridge Center, dining, parks, and schools. Commuters will appreciate the proximity to major highways, making travel to Honolulu and beyond a breeze. **Region:** Pearl City **Neighborhood:** Pearlridge **Condition:** Excellent, Above Average **Parking:** Garage, Open - 2 **Total Parking:** 4 **View:** None **Frontage:** Other **Pool:** **Zoning:** 11 - A-1 Low Density Apartment **Sale Conditions:** None **Schools:** , , \* [Request Showing](#), [Photos](#), [History](#), [Maps](#), [Deed](#), [Watch List](#), [Tax Info](#)

DOM = Days on Market