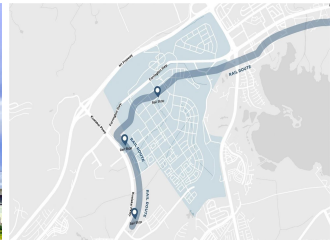
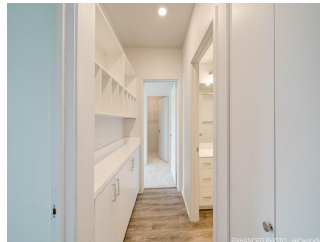
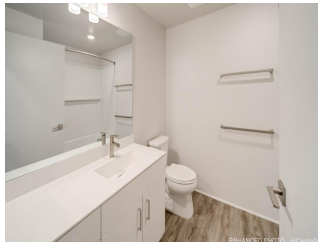
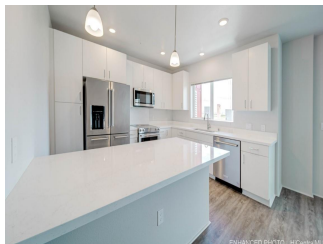
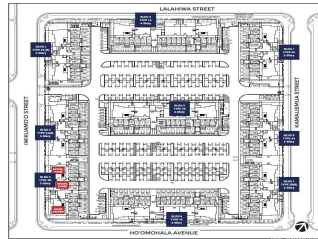


**Nahele at Hoopili 91-3641 IWIKUAMOO Street Unit 8407, Ewa Beach 96706 \* Nahele at**

**Hoopili \* \$589,275**

Beds: <b>2</b>	MLS#: <b>202414850, FS</b>	Year Built: <b>2024</b>
Bath: <b>2/0</b>	Status: <b>Active</b>	Remodeled:
Living Sq. Ft.: <b>1,077</b>	List Date & DOM: <b>06-24-2024 &amp; 6</b>	Total Parking: <b>2</b>
Land Sq. Ft.: <b>0</b>	Condition: <b>Excellent</b>	<a href="#">Assessed Value</a>
Lanai Sq. Ft.: <b>0</b>	Frontage:	Building: <b>\$0</b>
Sq. Ft. Other: <b>0</b>	Tax/Year: <b>\$0/2024</b>	Land: <b>\$0</b>
Total Sq. Ft. <b>1,077</b>	Neighborhood: <b>Hoopili-nahele</b>	Total: <b>\$0</b>
Maint./Assoc. <b>\$431 / \$78</b>	<a href="#">Flood Zone</a> : <b>Zone D - Tool</b>	Stories / CPR: <b>4-7 / No</b>
Parking: <b>Assigned, Open - 2</b>	Frontage:	
<a href="#">Zoning</a> : <b>17 - AMX-2 Medium Density Apt M</b>	View: <b>Other</b>	

**Public Remarks:** This single level 2 bedroom, 2 bath condominium with 1,069 square feet (net) allows for comfortable living. The concrete masonry block wall at the entry adds a chic urban vibe. This floor plan offers an open-concept living room and kitchen with an eat-at counter. From the living room, step out to the covered lanai to relax and take in the fresh air. The main bedroom has a walk-in closet and ensuite bathroom with a double vanity and shower. This corner unit provides for additional windows and sunlight. The second bedroom has a generously sized closet with mirrored wardrobe doors and the second bathroom features a full-size bathtub. A unique feature of this plan type is the drop zone. Air Conditioning and modern appliances including a range/oven, micro-hood, dishwasher, refrigerator, and washer/dryer allow for ease of living. Home Is Connected® - Smart Home system+ and includes energy efficient features\*. **Sale Conditions:** None **Schools:** [Ewa, Honouliuli, Kapolei](#) \* [Request Showing, Photos, History, Maps, Deed, Watch List, Tax Info](#)





Address	Price	Bd & Bth	Living / Avg.	Land   Avg.	Lanai	Occ.	FL	DOM
<a href="#">91-3641 IWIKUAMOO Street 8407</a>	<a href="#">\$589,275</a>	2 & 2/0	1,077   \$547	0   \$inf	0	88%	4	6

Address	Tax   Maint.   Ass.	Assessed Land	Assessed Building	Assessed Total	Ratio	Year & Remodeled
<a href="#">91-3641 IWIKUAMOO Street 8407</a>	\$0   \$431   \$78	\$0	\$0	\$0	inf%	2024 & NA

[91-3641 IWIKUAMOO Street 8407](#) - MLS#: [202414850](#) - This single level 2 bedroom, 2 bath condominium with 1,069 square feet (net) allows for comfortable living. The concrete masonry block wall at the entry adds a chic urban vibe. This floor plan offers an open-concept living room and kitchen with an eat-at counter. From the living room, step out to the covered lanai to relax and take in the fresh air. The main bedroom has a walk-in closet and ensuite bathroom with a double vanity and shower. This corner unit provides for additional windows and sunlight. The second bedroom has a generously sized closet with mirrored wardrobe doors and the second bathroom features a full-size bathtub. A unique feature of this plan type is the drop zone. Air Conditioning and modern appliances including a range/oven, micro-hood, dishwasher, refrigerator, and washer/dryer allow for ease of living. Home Is Connected® - Smart Home system+ and includes energy efficient features\*.

**Region:** Ewa Plain **Neighborhood:** Hoopili-nahele **Condition:** Excellent **Parking:** Assigned, Open - 2 **Total Parking:** 2  
**View:** Other **Frontage:** Pool: **Zoning:** 17 - AMX-2 Medium Density Apt M **Sale Conditions:** None **Schools:** [Ewa, Honouliuli, Kapolei](#) \* [Request Showing](#), [Photos](#), [History](#), [Maps](#), [Deed](#), [Watch List](#), [Tax Info](#)

DOM = Days on Market, Occ. = Occupancy, FL = Floor Number