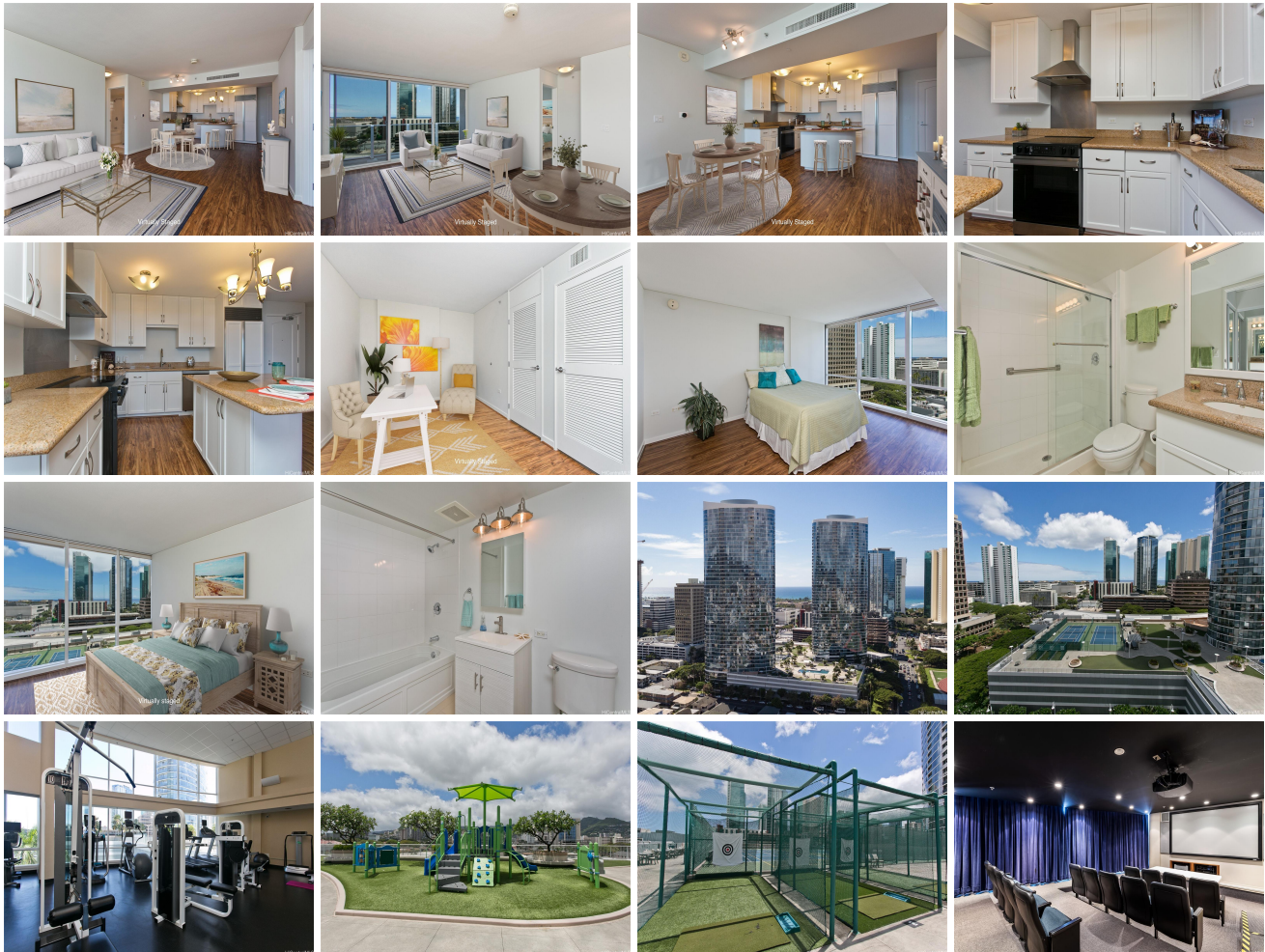


## **Moana Pacific 1296 Kapiolani Boulevard Unit II-1606, Honolulu 96814 \* Moana Pacific \***

**\$918,000**

Beds: <b>2</b>	MLS#: <b>202414892, FS</b>	Year Built: <b>2007</b>
Bath: <b>2/0</b>	Status: <b>Active</b>	Remodeled:
Living Sq. Ft.: <b>1,105</b>	List Date & DOM: <b>07-15-2024 &amp; 1</b>	Total Parking: <b>2</b>
Land Sq. Ft.: <b>0</b>	Condition: <b>Excellent</b>	<a href="#">Assessed Value</a>
Lanai Sq. Ft.: <b>0</b>	Frontage:	Building: <b>\$857,600</b>
Sq. Ft. Other: <b>0</b>	Tax/Year: <b>\$235/2024</b>	Land: <b>\$68,200</b>
Total Sq. Ft. <b>1,105</b>	Neighborhood: <b>Kakaako</b>	Total: <b>\$925,800</b>
Maint./Assoc. <b>\$1,156 / \$0</b>	<a href="#">Flood Zone</a> : <b>Zone AE - Tool</b>	Stories / CPR: / <b>No</b>
Parking: <b>Covered - 2, Guest, Secured Entry</b>	Frontage:	
<a href="#">Zoning</a> : <b>Kak - Kakaako Community Development Project</b>	View: <b>City, Ocean</b>	

**Public Remarks:** This favored '06 unit/floor plan offers a spacious two bedroom, two full bath with den layout. Lots of upgrades within last few years, including new stove/oven, dishwasher, washer/dryer, water heater, vinyl plank flooring and a new air conditioning system! Two parking stalls with entrances from either Pensacola St or Piikoi St makes accessibility easy. An abundance of amenities awaits you including fitness center, movie theater, party room, BBQ grills, tennis/pickle ball courts, pool, putting green, driving range & playground. Moana Pacific is so conveniently located whether heading to the beach, Ala Moana Center or Kakaako, so many activities, dining and shopping to enjoy! **Sale Conditions:** None **Schools:** , , \* [Request Showing](#), [Photos](#), [History](#), [Maps](#), [Deed](#), [Watch List](#), [Tax Info](#)



Address	Price	Bd & Bth	Living / Avg.	Land   Avg.	Lanai	Occ.	FL	DOM
<a href="#">1296 Kapiolani Boulevard II-1606</a>	<a href="#">\$918,000</a>	2 & 2/0	1,105   \$831	0   \$inf	0	43%	16	1

Address	Tax   Maint.   Ass.	Assessed Land	Assessed Building	Assessed Total	Ratio	Year & Remodeled
<a href="#">1296 Kapiolani Boulevard II-1606</a>	\$235   \$1,156   \$0	\$68,200	\$857,600	\$925,800	99%	2007 & NA

[1296 Kapiolani Boulevard II-1606](#) - MLS#: [202414892](#) - This favored '06 unit/floor plan offers a spacious two bedroom, two full bath with den layout. Lots of upgrades within last few years, including new stove/oven, dishwasher, washer/dryer, water heater, vinyl plank flooring and a new air conditioning system! Two parking stalls with entrances from either Pensacola St or Piikoi St makes accessibility easy. An abundance of amenities awaits you including fitness center, movie theater, party room, BBQ grills, tennis/pickle ball courts, pool, putting green, driving range & playground. Moana Pacific is so conveniently located whether heading to the beach, Ala Moana Center or Kakaako, so many activities, dining and shopping to enjoy! **Region:** Metro **Neighborhood:** Kakaako **Condition:** Excellent **Parking:** Covered - 2, Guest, Secured Entry **Total Parking:** 2 **View:** City, Ocean **Frontage:** Pool: **Zoning:** Kak - Kakaako Community Development Project **Sale Conditions:** None **Schools:** , , \* [Request Showing](#), [Photos](#), [History](#), [Maps](#), [Deed](#), [Watch List](#), [Tax Info](#)

DOM = Days on Market, Occ. = Occupancy, FL = Floor Number