

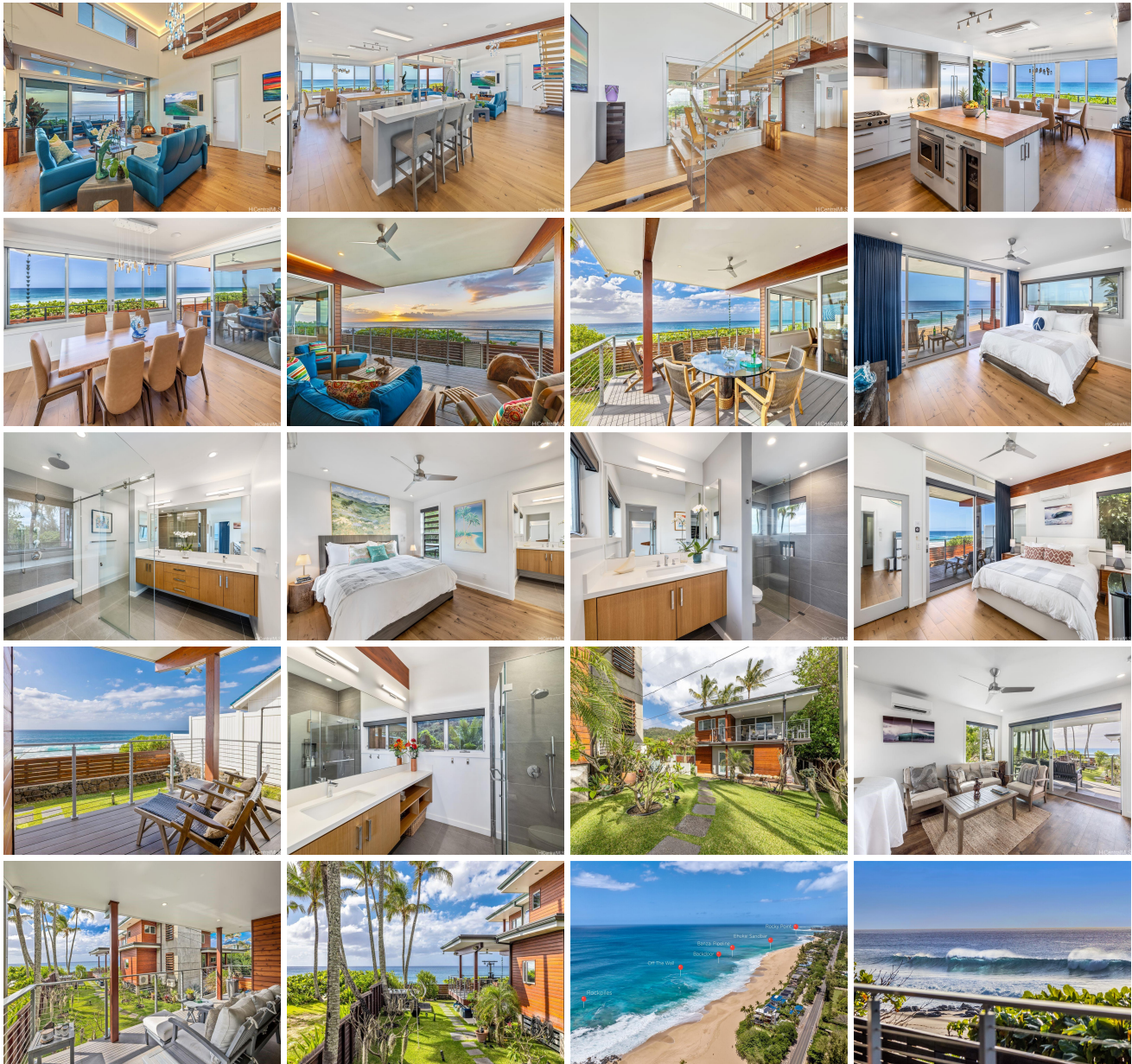
## **59-465 Kamehameha Highway, Haleiwa 96712 \* \* \$12,000,000**

Beds: **4**  
Bath: **4/1**  
Living Sq. Ft.: **2,700**  
Land Sq. Ft.: **11,583**  
Lanai Sq. Ft.: **1,221**  
Sq. Ft. Other: **0**  
Total Sq. Ft. **3,921**  
Maint./Assoc. **\$0 / \$0**  
Parking: **3 Car+**  
**Zoning: 05 - R-5 Residential District**

MLS#: **202414895, FS**  
Status: **Active**  
List Date & DOM: **06-27-2024 & 3**  
Condition: **Excellent**  
Frontage: **Ocean, Sandy Beach**  
Tax/Year: **\$1,717/2024**  
Neighborhood: **Sunset Area**  
**Flood Zone: Zone VE - Tool**

Year Built: **2021**  
Remodeled:  
Total Parking: **5**  
[Assessed Value](#)  
Building: **\$1,450,100**  
Land: **\$3,395,000**  
Total: **\$4,845,100**  
Stories / CPR: **Two / No**  
Frontage: **Ocean, Sandy Beach**  
View: **Coastline, Ocean, Sunset**

**Public Remarks:** Prepare to embark on a journey where the glitz and glam of celebrity living collide with the architectural masterpiece of a lifetime! Tucked in an enclave coveted by the stars, this awe-inspiring home, envisioned by the illustrious architect Pip White and brought to life by the skilled hands of local artisans in 2021, redefines the very essence of beachfront luxury. A masterpiece of casual modern beachfront style with seamless indoor outdoor living with generous covered lanais. Self contained Guest quarters above the garage have extensive views of the Blue Pacific and spacious accommodations for extended stays. Sip coffee or your favorite evening beverage for the sunset show every evening stretched out on the lanai chaise. So, let your senses come alive as you drink in the breathtaking panorama before you, where every sunset is a promise of new beginnings and every wave a testament to the spirit of adventure. This isn't just a view; it's a symphony of sights and sounds, a tapestry of dreams woven into the very fabric of existence. Welcome to your front-row seat to paradise, where the magic of Pipeline and the North Shore awaits. **Sale Conditions:** None **Schools:** , , \* [Request Showing](#), [Photos](#), [History](#), [Maps](#), [Deed](#), [Watch List](#), [Tax Info](#)





Address	Price	Bd & Bth	Living / Avg.	Land   Avg.	Lanai	Occ.	FL	DOM
<a href="#">59-465 Kamehameha Highway</a>	\$12,000,000	4 & 4/1	2,700   \$4,444	11,583   \$1,036	1,221	0%	0	3

Address	Tax   Maint.   Ass.	Assessed Land	Assessed Building	Assessed Total	Ratio	Year & Remodeled
<a href="#">59-465 Kamehameha Highway</a>	\$1,717   \$0   \$0	\$3,395,000	\$1,450,100	\$4,845,100	248%	2021 & NA

[59-465 Kamehameha Highway](#) - MLS#: [202414895](#) - Prepare to embark on a journey where the glitz and glam of celebrity living collide with the architectural masterpiece of a lifetime! Tucked in an enclave coveted by the stars, this awe-inspiring home, envisioned by the illustrious architect Pip White and brought to life by the skilled hands of local artisans in 2021, redefines the very essence of beachfront luxury. A masterpiece of casual modern beachfront style with seamless indoor outdoor living with generous covered lanais. Self contained Guest quarters above the garage have extensive views of the Blue Pacific and spacious accommodations for extended stays. Sip coffee or your favorite evening beverage for the sunset show every evening stretched out on the lanai chaise. So, let your senses come alive as you drink in the breathtaking panorama before you, where every sunset is a promise of new beginnings and every wave a testament to the spirit of adventure. This isn't just a view; it's a symphony of sights and sounds, a tapestry of dreams woven into the very fabric of existence. Welcome to your front-row seat to paradise, where the magic of Pipeline and the North Shore awaits. **Region:** North Shore **Neighborhood:** Sunset Area **Condition:** Excellent **Parking:** 3 Car+ **Total Parking:** 5 **View:** Coastline, Ocean, Sunset **Frontage:** Ocean,Sandy Beach **Pool:** Spa/HotTub **Zoning:** 05 - R-5 Residential District **Sale Conditions:** None **Schools:** , , \* [Request Showing](#), [Photos](#), [History](#), [Maps](#), [Deed](#), [Watch List](#), [Tax Info](#)

DOM = Days on Market, Occ. = Occupancy, FL = Floor Number