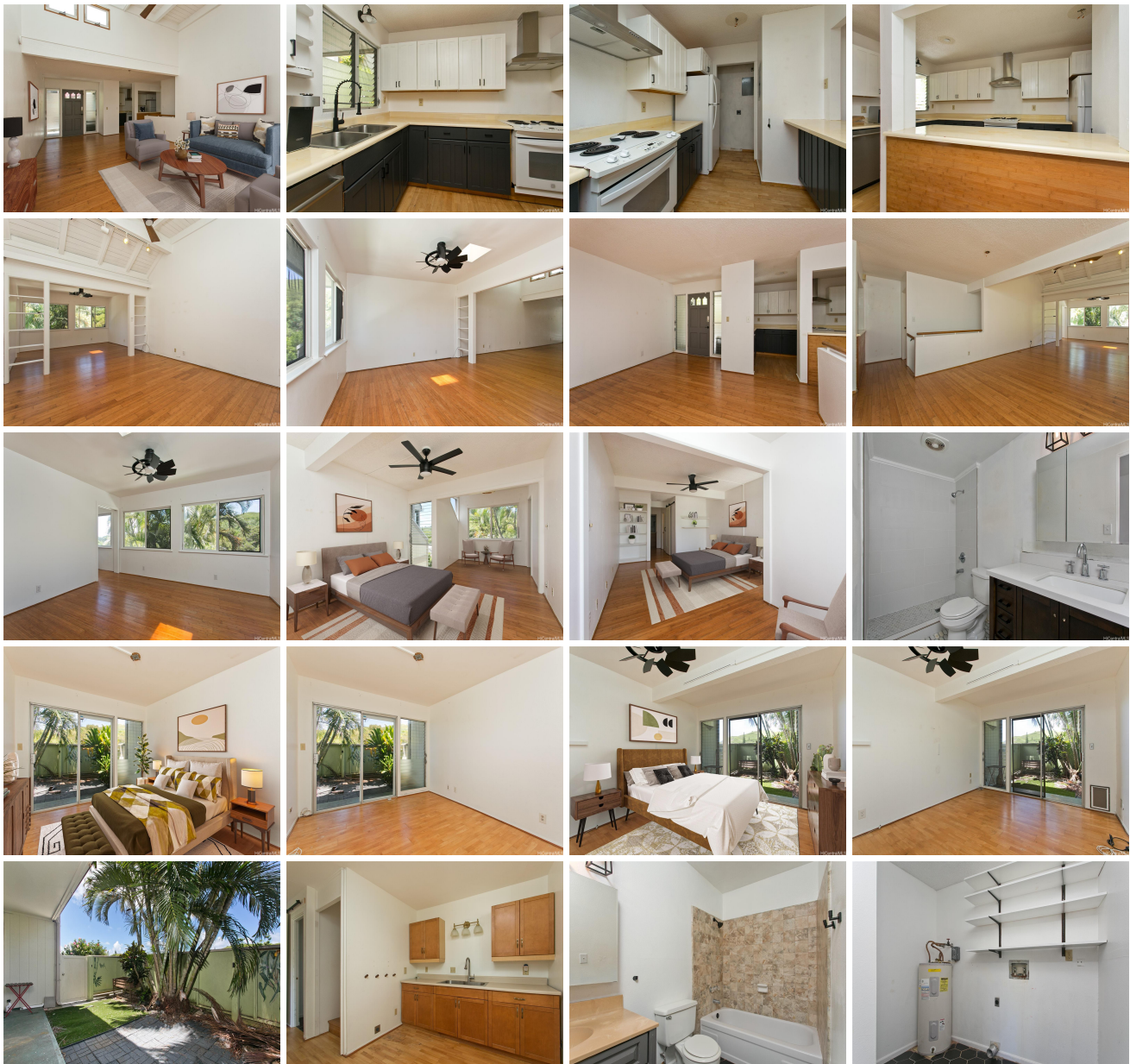


[Yacht Club Terrace 44-150-4 Kou Place Unit 2204, Kaneohe 96744](#) * Yacht Club Terrace *

\$850,000

Beds: 3	MLS#: 202414912, FS	Year Built: 1973
Bath: 2/0	Status: Active	Remodeled:
Living Sq. Ft.: 1,485	List Date & DOM: 07-05-2024 & 8	Total Parking: 2
Land Sq. Ft.: 0	Condition: Average	Assessed Value
Lanai Sq. Ft.: 650	Frontage:	Building: \$602,200
Sq. Ft. Other: 0	Tax/Year: \$232/2024	Land: \$309,500
Total Sq. Ft. 2,135	Neighborhood: Country Club	Total: \$911,700
Maint./Assoc. \$1,040 / \$0	Flood Zone : Zone D - Tool	Stories / CPR: Two / No
Parking: Assigned, Guest, Open - 2	Frontage:	
Zoning : 03 - R10 - Residential District	View: Garden	

Public Remarks: Welcome to Yacht Club Terrace in Kaneohe, Oahu! This beautifully updated 3-bedroom, 2-bathroom split-level unit offers island living at its best. Conveniently located near the H-3 and LikeLike Highway this unit is in the perfect location, nestled between Kailua and Kaneohe. The upstairs features a modern full kitchen with ample storage, a bright living area with natural light, a cozy bedroom, and a full bathroom. Downstairs, you'll find two bedrooms with large closets and access to a private yard, a wet bar perfect for entertaining, and a spacious lanai with garden views. The community amenities include a clubhouse for gatherings, a heated pool swimming, and close proximity to hiking trails, beaches, and the Kaneohe Yacht Club. This unit offers a flexible living space with all the perks of a well-maintained community. **Sale Conditions:** Short Sale **Schools:** [Aikahi](#), [Kailua](#), [Kalaheo](#) * [Request Showing](#), [Photos](#), [History](#), [Maps](#), [Deed](#), [Watch List](#), [Tax Info](#)





Address	Price	Bd & Bth	Living / Avg.	Land Avg.	Lanai	Occ.	FL	DOM
44-150-4 Kou Place 2204	\$850,000	3 & 2/0	1,485 \$572	0 \$inf	650	61%	1	8

Address	Tax Maint. Ass.	Assessed Land	Assessed Building	Assessed Total	Ratio	Year & Remodeled
44-150-4 Kou Place 2204	\$232 \$1,040 \$0	\$309,500	\$602,200	\$911,700	93%	1973 & NA

[44-150-4 Kou Place 2204](#) - MLS#: [202414912](#) - Welcome to Yacht Club Terrace in Kaneohe, Oahu! This beautifully updated 3-bedroom, 2-bathroom split-level unit offers island living at its best. Conveniently located near the H-3 and LikeLike Highway this unit is in the perfect location, nestled between Kailua and Kaneohe . The upstairs features a modern full kitchen with ample storage, a bright living area with natural light, a cozy bedroom, and a full bathroom. Downstairs, you'll find two bedrooms with large closets and access to a private yard, a wet bar perfect for entertaining, and a spacious lanai with garden views. The community amenities include a clubhouse for gatherings, a heated pool swimming, and close proximity to hiking trails, beaches, and the Kaneohe Yacht Club. This unit offers a flexible living space with all the perks of a well-maintained community. **Region:** Kaneohe **Neighborhood:** Country Club **Condition:** Average **Parking:** Assigned, Guest, Open - 2 **Total Parking:** 2 **View:** Garden **Frontage:** **Pool:** **Zoning:** 03 - R10 - Residential District **Sale Conditions:** Short Sale **Schools:** [Aikahi](#), [Kailua](#), [Kalaheo](#) * [Request Showing](#), [Photos](#), [History](#), [Maps](#), [Deed](#), [Watch List](#), [Tax Info](#)

DOM = Days on Market, Occ. = Occupancy, FL = Floor Number