

Harbour Ridge 3045 Ala Napuaa Place Unit 813, Honolulu 96818 * Harbour Ridge *

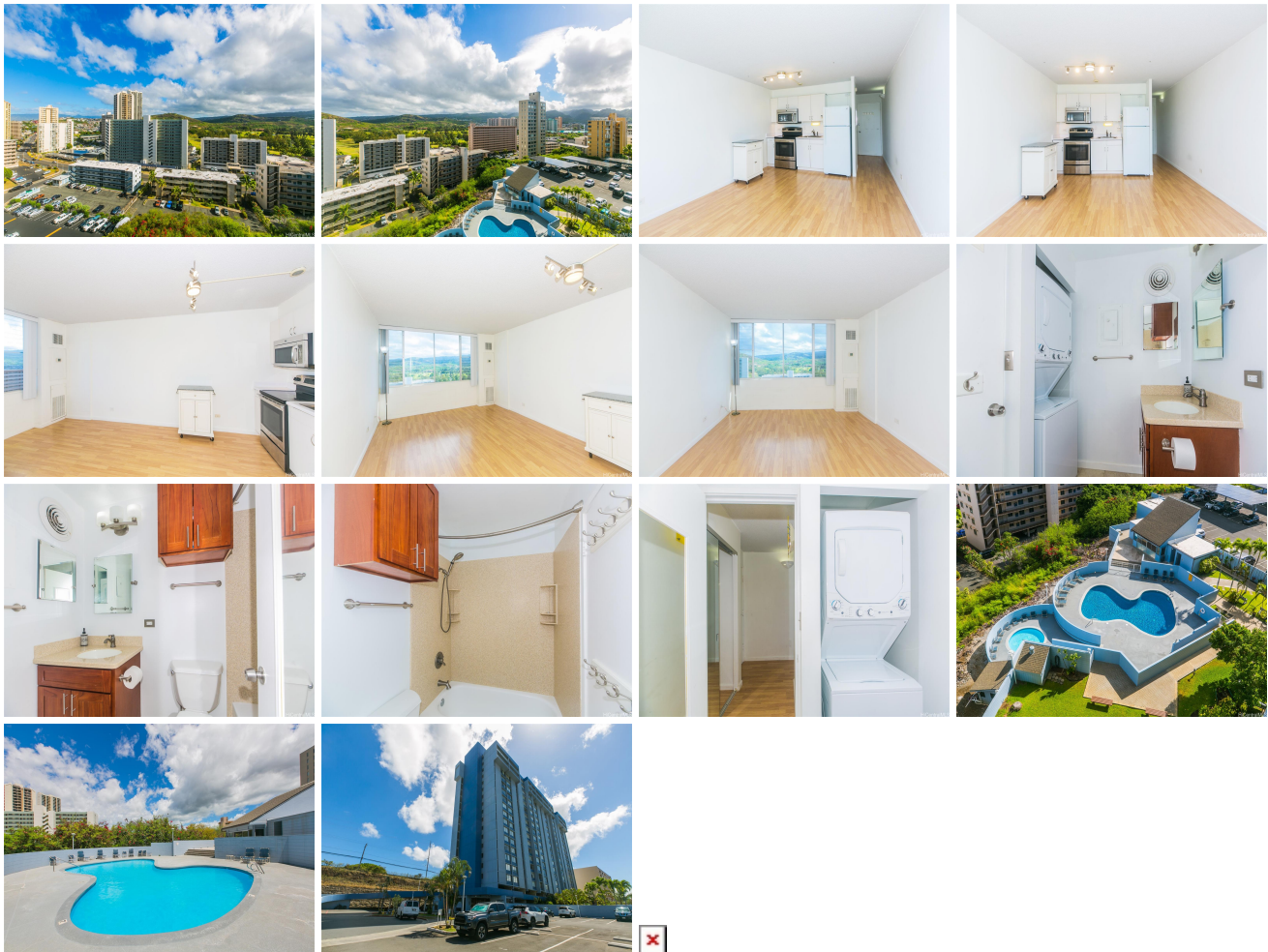
\$299,000

Beds: 0	MLS#: 202414999, FS	Year Built: 1974
Bath: 1/0	Status: Active	Remodeled: 2016
Living Sq. Ft.: 391	List Date & DOM: 06-26-2024 & 20	Total Parking: 1
Land Sq. Ft.: 140,307	Condition: Excellent	Assessed Value
Lanai Sq. Ft.: 0	Frontage: Other	Building: \$233,700
Sq. Ft. Other: 0	Tax/Year: \$54/2023	Land: \$26,700
Total Sq. Ft. 391	Neighborhood: Salt Lake	Total: \$260,400
Maint./Assoc. \$520 / \$0	Flood Zone : Zone X - Tool	Stories / CPR: 21+ / No
Parking: Assigned, Covered - 1, Garage, Guest	Frontage: Other	

Zoning: 12 - A-2 Medium Density Apartme

View: Golf Course, Mountain

Public Remarks: Investment Opportunity or Perfect for First Time Home Buyers! Enjoy stunning golf course and mountain views from this clean and maintained studio unit located at Harbour Ridge Condominium. Unit features a remodeled kitchen, bath and floors, with large windows flooding the space with natural light. Washer/Dryer in unit. Assigned, covered parking space. Amenities include a pool, rec room, and BBQ area, along with garage parking, guest parking and security. Maintenance fees cover electricity, Central AC, cable, water/sewer, security, and resident manager. Conveniently located near Moanalua High School, shopping centers, Honolulu International Airport, and major military bases like Tripler and Pearl Harbor. Whether you're looking to invest or buy your first home, this studios offers a secure and comfortable living environment with everything you need close at hand. Don't miss this rare opportunity in a highly sought-after location! 3D VIRTUAL TOUR AVAILABLE. **Sale Conditions:** None **Schools:** , , * [Request Showing](#), [Photos](#), [History](#), [Maps](#), [Deed](#), [Watch List](#), [Tax Info](#)



Address	Price	Bd & Bth	Living / Avg.	Land Avg.	Lanai	Occ.	FL	DOM
3045 Ala Napuaa Place 813	\$299,000	0 & 1/0	391 \$765	140,307 \$2	0	48%	8	20

Address	Tax Maint. Ass.	Assessed Land	Assessed Building	Assessed Total	Ratio	Year & Remodeled

3045 Ala Napuaa Place 813	\$54 \$520 \$0	\$26,700	\$233,700	\$260,400	115%	1974 & 2016
---	--------------------	----------	-----------	-----------	------	-------------

[3045 Ala Napuaa Place 813](#) - MLS#: [202414999](#) - Investment Opportunity or Perfect for First Time Home Buyers! Enjoy stunning golf course and mountain views from this clean and maintained studio unit located at Harbour Ridge Condominium. Unit features a remodeled kitchen, bath and floors, with large windows flooding the space with natural light. Washer/Dryer in unit. Assigned, covered parking space. Amenities include a pool, rec room, and BBQ area, along with garage parking, guest parking and security. Maintenance fees cover electricity, Central AC, cable, water/sewer, security, and resident manager. Conveniently located near Moanalua High School, shopping centers, Honolulu International Airport, and major military bases like Tripler and Pearl Harbor. Whether you're looking to invest or buy your first home, this studios offers a secure and comfortable living environment with everything you need close at hand. Don't miss this rare opportunity in a highly sought-after location! 3D VIRTUAL TOUR AVAILABLE. **Region:** Metro **Neighborhood:** Salt Lake **Condition:** Excellent **Parking:** Assigned, Covered - 1, Garage, Guest **Total Parking:** 1 **View:** Golf Course, Mountain **Frontage:** Other **Pool:** **Zoning:** 12 - A-2 Medium Density Apartme **Sale Conditions:** None **Schools:** , , * [Request Showing](#), [Photos](#), [History](#), [Maps](#), [Deed](#), [Watch List](#), [Tax Info](#)

DOM = Days on Market, Occ. = Occupancy, FL = Floor Number