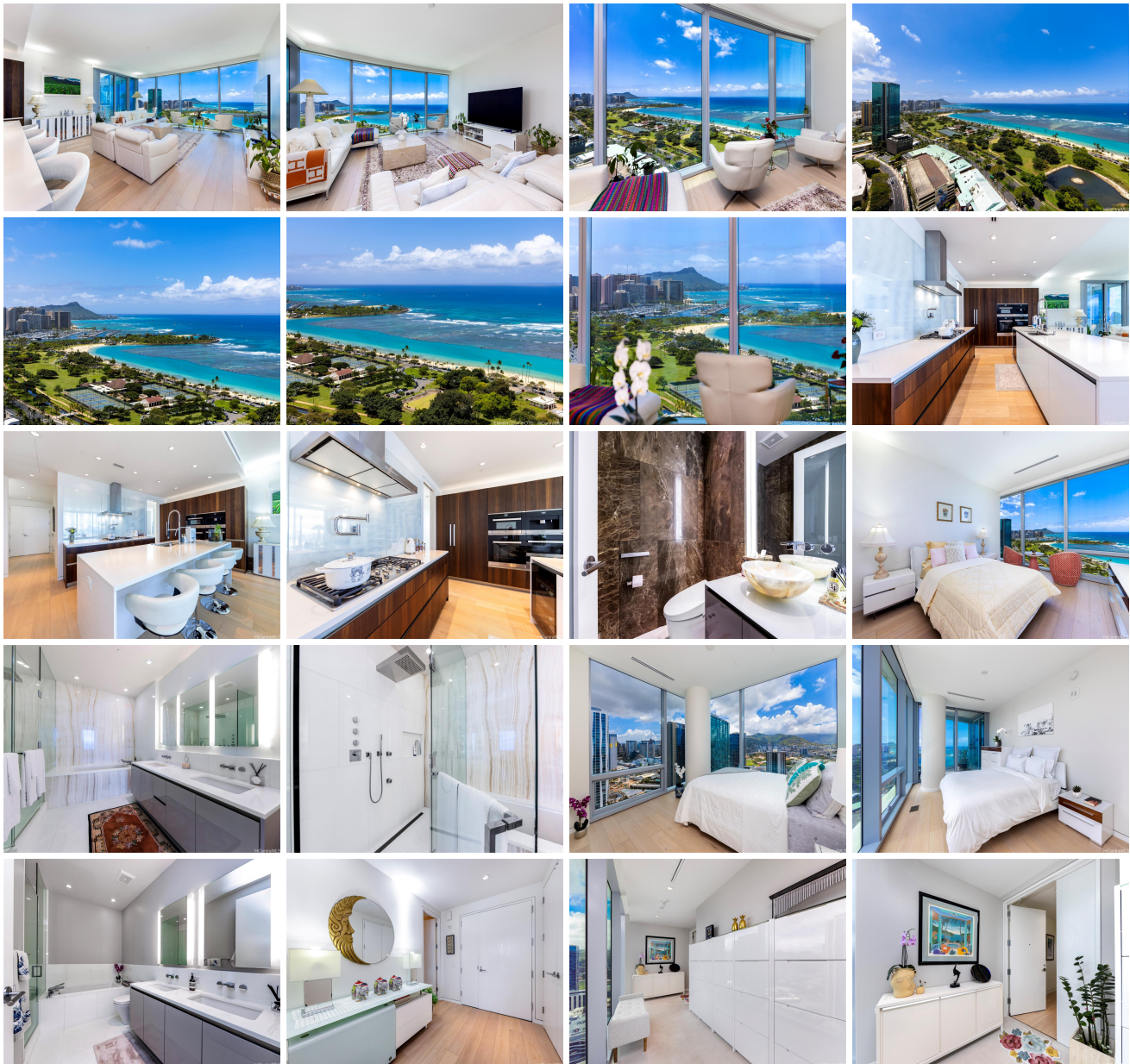


Waiea - 1118 Ala Moana 1118 Ala Moana Boulevard Unit 2706, Honolulu 96814 * Waiea - 1118 Ala Moana * \$4,950,000

Beds: 3	MLS#: 202415063, FS	Year Built: 2016
Bath: 2/0	Status: Active	Remodeled:
Living Sq. Ft.: 2,030	List Date & DOM: 06-27-2024 & 3	Total Parking: 2
Land Sq. Ft.: 0	Condition: Excellent	Assessed Value
Lanai Sq. Ft.: 77	Frontage: Other	Building: \$3,510,400
Sq. Ft. Other: 0	Tax/Year: \$1,027/2023	Land: \$111,400
Total Sq. Ft. 2,107	Neighborhood: Kakaako	Total: \$3,621,800
Maint./Assoc. \$2,897 / \$0	Flood Zone : Zone AE - Tool	Stories / CPR: 21+ / No
Parking: Assigned, Covered - 2, Guest, Secured Entry	Frontage: Other	
Zoning : Kak - Kakaako Community Development Project	View: City, Coastline, Diamond Head, Mountain, Ocean, Sunrise	

Public Remarks: Welcome to Waiea, "Water of Life", where Ultra-Luxe Urban Living meets the Ocean. This beautifully-kept & upgraded 3-bedroom unit is situated on the favored east-facing side, where stunning Diamond Head, Magic Island, sandy beach shoreline & Pacific Ocean vistas captivate throughout the main living areas. High-end features include a chef's gourmet kitchen with full-suite Miele appliances, a resort-style ocean view master suite with a double walk-in closet, upgraded soaking tub, separate walk-in shower, triple vanity & much more. Situated directly across from Ala Moana Beach Park & Kewalo Harbor, with incredible options for fine dining, boutique shopping, entertainment, beach activities & more just outside your doorstep. Experience Paradise, Found at Waiea #2706. Listing includes enhanced, zoomed-in photos. **Sale Conditions:** None
Schools: , , * [Request Showing](#), [Photos](#), [History](#), [Maps](#), [Deed](#), [Watch List](#), [Tax Info](#)





Address	Price	Bd & Bth	Living / Avg.	Land Avg.	Lanai	Occ.	FL	DOM
1118 Ala Moana Boulevard 2706	\$4,950,000	3 & 2/0	2,030 \$2,438	0 \$inf	77	34%	27	3

Address	Tax Maint. Ass.	Assessed Land	Assessed Building	Assessed Total	Ratio	Year & Remodeled
1118 Ala Moana Boulevard 2706	\$1,027 \$2,897 \$0	\$111,400	\$3,510,400	\$3,621,800	137%	2016 & NA

[1118 Ala Moana Boulevard 2706](#) - MLS#: [202415063](#) - Welcome to Waiea, "Water of Life", where Ultra-Luxe Urban Living meets the Ocean. This beautifully-kept & upgraded 3-bedroom unit is situated on the favored east-facing side, where stunning Diamond Head, Magic Island, sandy beach shoreline & Pacific Ocean vistas captivate throughout the main living areas. High-end features include a chef's gourmet kitchen with full-suite Miele appliances, a resort-style ocean view master suite with a double walk-in closet, upgraded soaking tub, separate walk-in shower, triple vanity & much more. Situated directly across from Ala Moana Beach Park & Kewalo Harbor, with incredible options for fine dining, boutique shopping, entertainment, beach activities & more just outside your doorstep. Experience Paradise, Found at Waiea #2706. Listing includes enhanced, zoomed-in photos. **Region:** Metro **Neighborhood:** Kakaako **Condition:** Excellent **Parking:** Assigned, Covered - 2, Guest, Secured Entry **Total Parking:** 2 **View:** City, Coastline, Diamond Head, Mountain, Ocean, Sunrise **Frontage:** Other **Pool:** **Zoning:** Kak - Kakaako Community Development Project **Sale Conditions:** None **Schools:** , , * [Request Showing](#), [Photos](#), [History](#), [Maps](#), [Deed](#), [Watch List](#), [Tax Info](#)

DOM = Days on Market, Occ. = Occupancy, FL = Floor Number