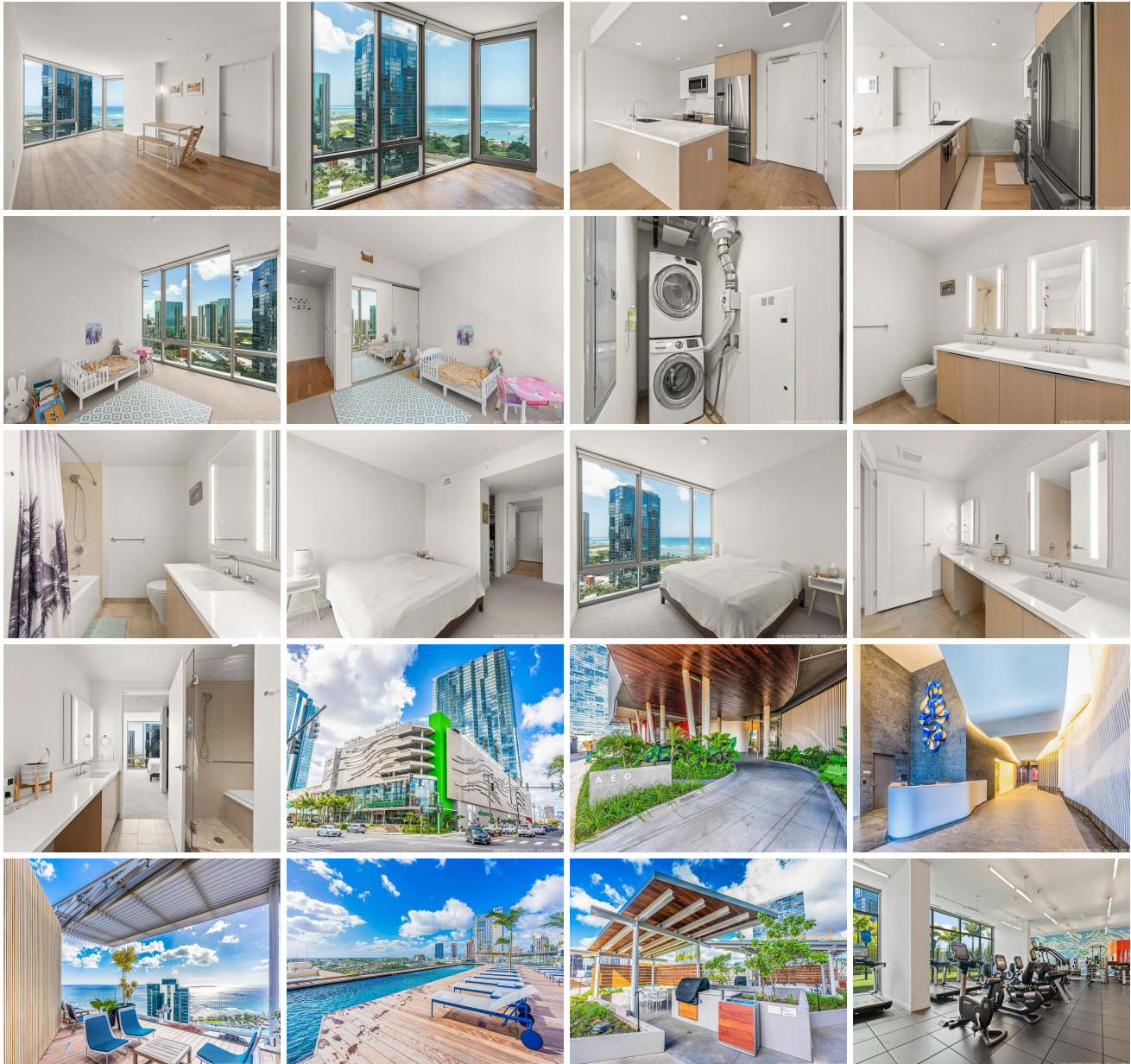


## **Ae'o 1001 Queen Street Unit 2502, Honolulu 96814 \* \$1,415,000**

Beds: <b>2</b>	MLS#: <b>202415075, FS</b>	Year Built: <b>2018</b>
Bath: <b>2/0</b>	Status: <b>Active</b>	Remodeled:
Living Sq. Ft.: <b>983</b>	List Date & DOM: <b>07-01-2024 &amp; 15</b>	Total Parking: <b>2</b>
Land Sq. Ft.: <b>0</b>	Condition: <b>Above Average</b>	<a href="#">Assessed Value</a>
Lanai Sq. Ft.: <b>0</b>	Frontage:	Building: <b>\$1,350,800</b>
Sq. Ft. Other: <b>0</b>	Tax/Year: <b>\$719/2023</b>	Land: <b>\$69,900</b>
Total Sq. Ft. <b>983</b>	Neighborhood: <b>Kakaako</b>	Total: <b>\$1,420,700</b>
Maint./Assoc. <b>\$1,094 / \$27</b>	<a href="#">Flood Zone</a> : <b>Zone AE - Tool</b>	Stories / CPR: <b>21+ / No</b>
Parking: <b>Assigned, Covered - 2</b>	Frontage:	
<a href="#">Zoning</a> : <b>Kak - Kakaako Community Development Project</b>	View: <b>City, Ocean</b>	

**Public Remarks:** Experience urban sophistication in this 2-bedroom, 2-bathroom corner unit in preferred 02 stack, showcasing breathtaking ocean and city views through expansive floor-to-ceiling windows. Located in Honolulu's vibrant Ward Village, this residence features a spacious open-concept layout with high ceilings, hardwood floors, and a modern kitchen equipped with premium appliances and quartz countertops. The main bedroom includes an en-suite bathroom and ample closet space, while the second bedroom is well-appointed with convenient access to a full guest bathroom. Enjoy resort-style amenities including a pool, fitness center, and concierge services. Ideally situated near Ala Moana Beach Park and Ala Moana Center, this is urban living at its finest in one of Honolulu's most sought after neighborhoods. **Sale Conditions:** None  
**Schools:** , , \* [Request Showing](#), [Photos](#), [History](#), [Maps](#), [Deed](#), [Watch List](#), [Tax Info](#)





Address	Price	Bd & Bth	Living / Avg.	Land   Avg.	DOM
<a href="#">1001 Queen Street 2502</a>	<a href="#">\$1,415,000</a>	2 & 2/0	983   \$1,439	0   \$inf	15

Address	Tax   Maint.   Ass.	Assessed Land	Assessed Building	Assessed Total	Ratio	Year & Remodeled
<a href="#">1001 Queen Street 2502</a>	\$719   \$1,094   \$27	\$69,900	\$1,350,800	\$1,420,700	100%	2018 & NA

[1001 Queen Street 2502](#) - MLS#: [202415075](#) - Experience urban sophistication in this 2-bedroom, 2-bathroom corner unit in preferred 02 stack, showcasing breathtaking ocean and city views through expansive floor-to-ceiling windows. Located in Honolulu's vibrant Ward Village, this residence features a spacious open-concept layout with high ceilings, hardwood floors, and a modern kitchen equipped with premium appliances and quartz countertops. The main bedroom includes an en-suite bathroom and ample closet space, while the second bedroom is well-appointed with convenient access to a full guest bathroom. Enjoy resort-style amenities including a pool, fitness center, and concierge services. Ideally situated near Ala Moana Beach Park and Ala Moana Center, this is urban living at its finest in one of Honolulu's most sought after neighborhoods. **Region:** Metro **Neighborhood:** Kakaako **Condition:** Above Average **Parking:** Assigned, Covered - 2 **Total Parking:** 2 **View:** City, Ocean **Frontage:** Pool: **Zoning:** Kak - Kakaako Community Development Project **Sale Conditions:** None **Schools:** , , \* [Request Showing](#), [Photos](#), [History](#), [Maps](#), [Deed](#), [Watch List](#), [Tax Info](#)

DOM = Days on Market