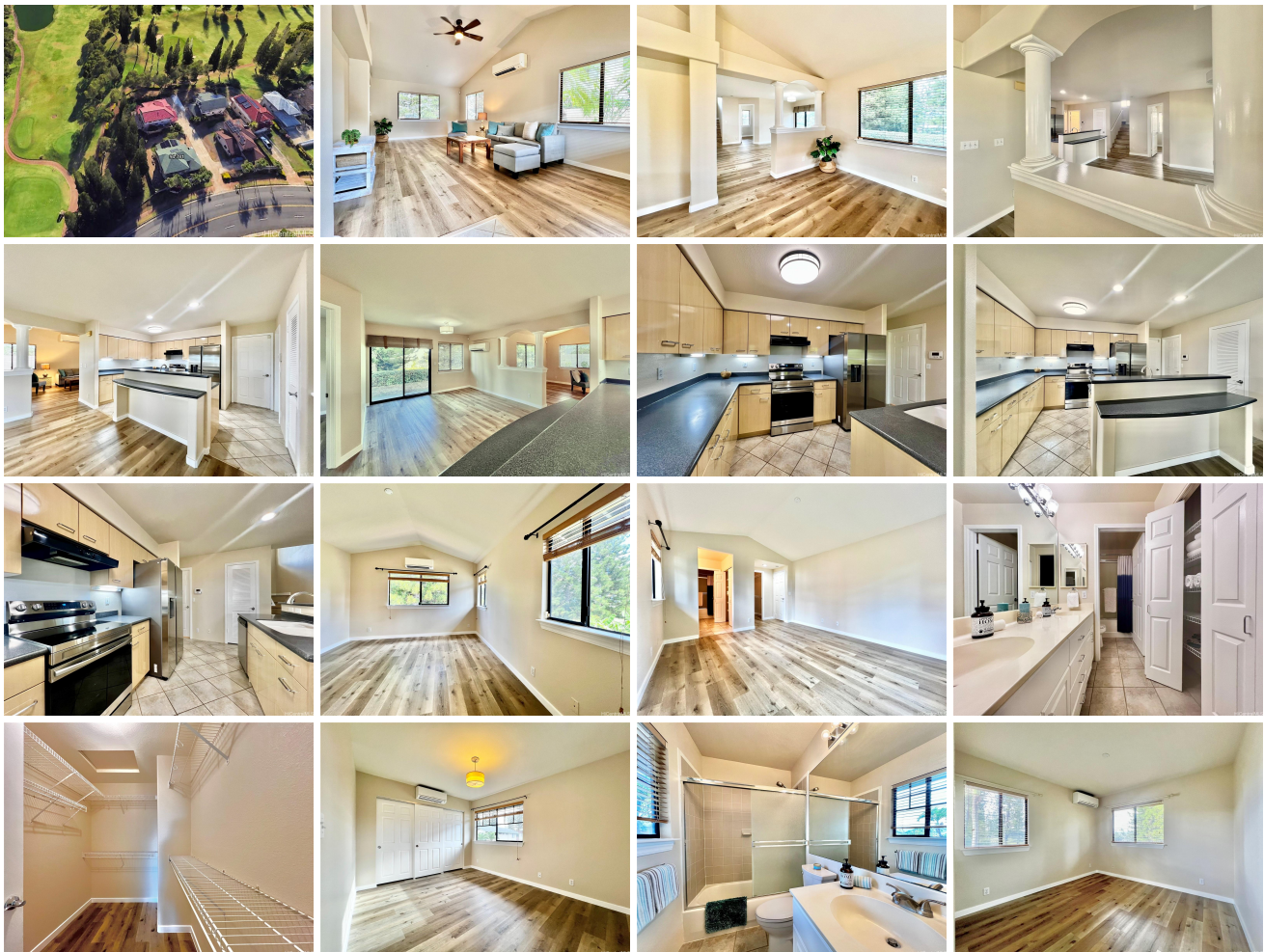


**94-781 Lumiauau Street, Waipahu 96797 \* \* \$1,275,000**

Beds: <b>4</b>	MLS#: <b>202415105, FS</b>	Year Built: <b>1997</b>
Bath: <b>3/0</b>	Status: <b>Active</b>	Remodeled: <b>2024</b>
Living Sq. Ft.: <b>1,773</b>	List Date & DOM: <b>07-08-2024 &amp; 5</b>	Total Parking: <b>4</b>
Land Sq. Ft.: <b>5,640</b>	Condition: <b>Excellent, Above Average</b>	<a href="#">Assessed Value</a>
Lanai Sq. Ft.: <b>0</b>	Frontage: <b>Golf Course</b>	Building: <b>\$499,100</b>
Sq. Ft. Other: <b>0</b>	Tax/Year: <b>\$257/2023</b>	Land: <b>\$776,500</b>
Total Sq. Ft. <b>1,773</b>	Neighborhood: <b>Waikele</b>	Total: <b>\$1,275,600</b>
Maint./Assoc. <b>\$0 / \$0</b>	<a href="#">Flood Zone</a> : <b>Zone D - Tool</b>	Stories / CPR: <b>Two / No</b>
Parking: <b>3 Car+, Driveway, Garage</b>	Frontage: <b>Golf Course</b>	
<a href="#">Zoning</a> : <b>05 - R-5 Residential District</b>	View: <b>Golf Course</b>	

**Public Remarks:** Presenting an exceptional opportunity to own this stunning, move-in ready Classics home on the golf course in the master-planned community of Waikele. Situated on an elevated corner lot, with tree-lined golf course frontage, this four-bedroom (one downstairs), three-bath residence offers captivating views from the comfort of home. The tropical yard is adorned with palm, floral, citrus, and banana trees. Inside, discover brand-new luxury vinyl plank floors, ceramic tile in kitchen and baths, fresh trim and paint, and you'll love the architectural design, high ceilings, and bullnosed edges. The kitchen features new stainless steel appliances, walk-in pantry, and breakfast bar. Stay cool with five split ACs and owned net-metered photovoltaic system (PV/solar). This home shows and feels like a model home, has generous storage, and new garage door opener. Front porch, garage, and extra parking are safely and conveniently located off-street, as shown in photos. Enjoy leisurely moments at the Waikele Country Club, nearby pools or parks, tee off on the golf course, explore Waikele Premium Outlets and other shopping, dine at local eateries, or take advantage of convenient highway access. **Sale Conditions:** None **Schools:** [Waikele](#), [Waipahu](#), [Waipahu](#) \* [Request Showing](#), [Photos](#), [History](#), [Maps](#), [Deed](#), [Watch List](#), [Tax Info](#)





Address	Price	Bd & Bth	Living / Avg.	Land   Avg.	Lanai	Occ.	FL	DOM
<a href="#">94-781 Lumiauau Street</a>	<a href="#">\$1,275,000</a>	4 & 3/0	1,773   \$719	5,640   \$226	0	0%	0	5

Address	Tax   Maint.   Ass.	Assessed Land	Assessed Building	Assessed Total	Ratio	Year & Remodeled
<a href="#">94-781 Lumiauau Street</a>	\$257   \$0   \$0	\$776,500	\$499,100	\$1,275,600	100%	1997 & 2024

[94-781 Lumiauau Street](#) - MLS#: [202415105](#) - Presenting an exceptional opportunity to own this stunning, move-in ready Classics home on the golf course in the master-planned community of Waikele. Situated on an elevated corner lot, with tree-lined golf course frontage, this four-bedroom (one downstairs), three-bath residence offers captivating views from the comfort of home. The tropical yard is adorned with palm, floral, citrus, and banana trees. Inside, discover brand-new luxury vinyl plank floors, ceramic tile in kitchen and baths, fresh trim and paint, and you'll love the architectural design, high ceilings, and bullnosed edges. The kitchen features new stainless steel appliances, walk-in pantry, and breakfast bar. Stay cool with five split ACs and owned net-metered photovoltaic system (PV/solar). This home shows and feels like a model home, has generous storage, and new garage door opener. Front porch, garage, and extra parking are safely and conveniently located off-street, as shown in photos. Enjoy leisurely moments at the Waikele Country Club, nearby pools or parks, tee off on the golf course, explore Waikele Premium Outlets and other shopping, dine at local eateries, or take advantage of convenient highway access. **Region:** Waipahu **Neighborhood:** Waikele **Condition:** Excellent, Above Average **Parking:** 3 Car+, Driveway, Garage **Total Parking:** 4 **View:** Golf Course **Frontage:** Golf Course **Pool:** Community Association Pool **Zoning:** 05 - R-5 Residential District **Sale Conditions:** None **Schools:** [Waikele](#), [Waipahu](#), [Waipahu](#) \* [Request Showing](#), [Photos](#), [History](#), [Maps](#), [Deed](#), [Watch List](#), [Tax Info](#)

DOM = Days on Market, Occ. = Occupancy, FL = Floor Number