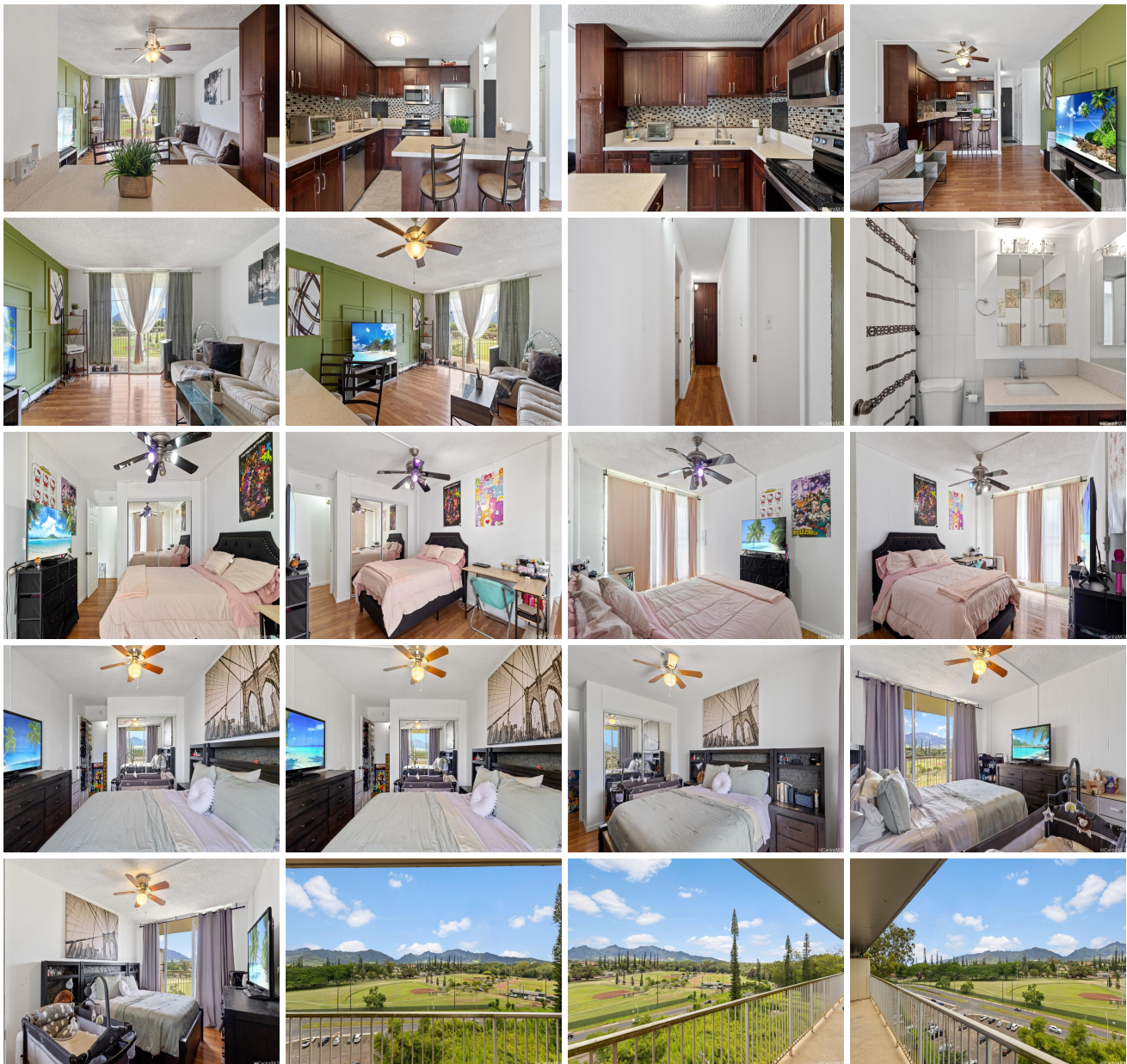


**Kemoo By Lake 1830 Wilikina Drive Unit 912, Wahiawa 96786 \* Kemoo By Lake \* \$385,000**

Beds: <b>2</b>	MLS#: <b><u>202415117</u>, FS</b>	Year Built: <b>1972</b>
Bath: <b>1/0</b>	Status: <b>Active</b>	Remodeled:
Living Sq. Ft.: <b>881</b>	List Date & DOM: <b>06-28-2024 &amp; 18</b>	Total Parking: <b>1</b>
Land Sq. Ft.: <b>63,815</b>	Condition: <b>Excellent, Above Average</b>	<a href="#">Assessed Value</a>
Lanai Sq. Ft.: <b>277</b>	Frontage: <b>Other</b>	Building: <b>\$245,400</b>
Sq. Ft. Other: <b>0</b>	Tax/Year: <b>\$96/2023</b>	Land: <b>\$81,300</b>
Total Sq. Ft. <b>1,158</b>	Neighborhood: <b>Wilikina</b>	Total: <b>\$326,700</b>
Maint./Assoc. <b>\$774 / \$0</b>	<a href="#">Flood Zone</a> : <b>Zone D - Tool</b>	Stories / CPR: <b>One / No</b>
Parking: <b>Assigned, Covered - 1, Guest</b>	Frontage: <b>Other</b>	
<a href="#">Zoning</a> : <b>12 - A-2 Medium Density Apartme</b>	View: <b>None</b>	

**Public Remarks:** VA ASSUMABLE!!! Kemoo By The Lake 2BR/1BATH/1Pkg almost directly across the street from Schofield Barracks Army Base. Plenty of guest parking. Gorgeous view with HUGE LANAI. Extremely peaceful. Easy access to H2 Freeway and up to the North Shore. Plenty of shopping and eateries in Mililani along with Costco., etc. Updated kitchen. Don't Miss Out! **Sale Conditions:** None **Schools:** , , \* [Request Showing](#), [Photos](#), [History](#), [Maps](#), [Deed](#), [Watch List](#), [Tax Info](#)





Address	Price	Bd & Bth	Living / Avg.	Land   Avg.	Lanai	Occ.	FL	DOM
<a href="#">1830 Wilikina Drive 912</a>	<a href="#">\$385,000</a>	2 & 1/0	881   \$437	63,815   \$6	277	27%	9	18

Address	Tax   Maint.   Ass.	Assessed Land	Assessed Building	Assessed Total	Ratio	Year & Remodeled
<a href="#">1830 Wilikina Drive 912</a>	\$96   \$774   \$0	\$81,300	\$245,400	\$326,700	118%	1972 & NA

[1830 Wilikina Drive 912](#) - MLS#: [202415117](#) - VA ASSUMABLE!!! Kemoo By The Lake 2BR/1BATH/1Pkg almost directly across the street from Schofield Barracks Army Base. Plenty of guest parking. Gorgeous view with HUGE LANAI. Extremely peaceful. Easy access to H2 Freeway and up to the North Shore. Plenty of shopping and eateries in Mililani along with Costco., etc. Updated kitchen. Don't Miss Out! **Region:** Central **Neighborhood:** Wilikina **Condition:** Excellent, Above Average **Parking:** Assigned, Covered - 1, Guest **Total Parking:** 1 **View:** None **Frontage:** Other **Pool:** **Zoning:** 12 - A-2 Medium Density Apartme **Sale Conditions:** None **Schools:** , , \* [Request Showing](#), [Photos](#), [History](#), [Maps](#), [Deed](#), [Watch List](#), [Tax Info](#)

DOM = Days on Market, Occ. = Occupancy, FL = Floor Number