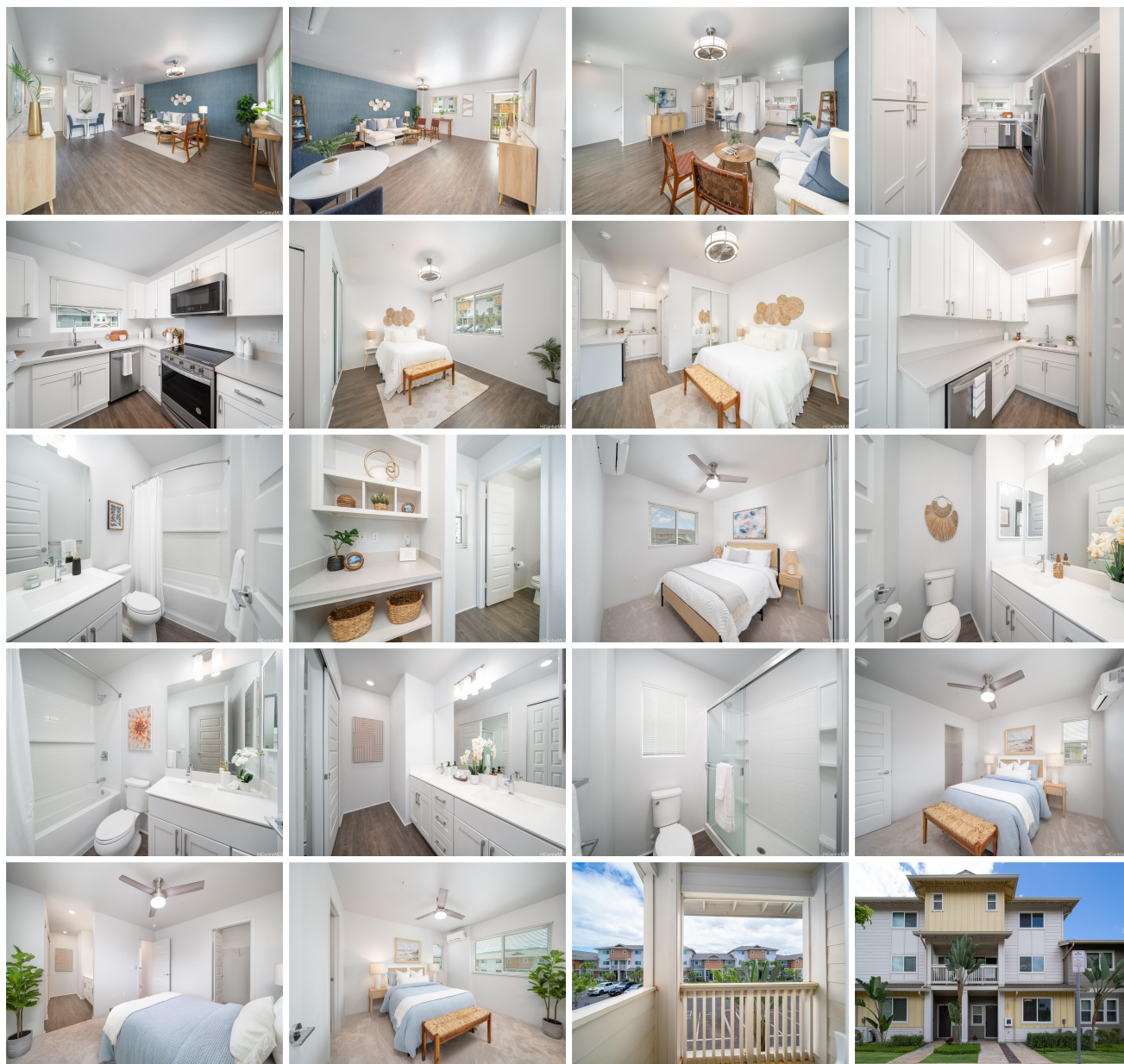


**Kohina at Hoopili 91-3525 Kauluakoko Street Unit 2505, Ewa Beach 96706 \* \$835,000**

Beds: <b>3</b>	MLS#: <b>202415164, FS</b>	Year Built: <b>2021</b>
Bath: <b>3/1</b>	Status: <b>Active</b>	Remodeled:
Living Sq. Ft.: <b>1,531</b>	List Date & DOM: <b>07-08-2024 &amp; 8</b>	Total Parking: <b>2</b>
Land Sq. Ft.: <b>0</b>	Condition: <b>Excellent, Above Average</b>	<a href="#">Assessed Value</a>
Lanai Sq. Ft.: <b>0</b>	Frontage: <b>Other</b>	Building: <b>\$465,400</b>
Sq. Ft. Other: <b>0</b>	Tax/Year: <b>\$207/2024</b>	Land: <b>\$247,000</b>
Total Sq. Ft. <b>1,531</b>	Neighborhood: <b>Hoopili-kohina</b>	Total: <b>\$703,400</b>
Maint./Assoc. <b>\$554 / \$72</b>	<a href="#">Flood Zone</a> : <b>Zone D - Tool</b>	Stories / CPR: <b>Three / No</b>
Parking: <b>Assigned, Garage, Guest</b>	Frontage: <b>Other</b>	
<a href="#">Zoning</a> : <b>17 - AMX-2 Medium Density Apt M</b>	View: <b>None</b>	

**Public Remarks:** Discover your dream home in the heart of the Kohina at Hoopili community! Built in 2021, this stunning 3-bed, 3.5-bath townhouse offers versatility and modern elegance. The first floor features a full bedroom and bathroom, with three separate entrances for maximum convenience and privacy. As you enter this almost brand-new townhouse, you'll be captivated by its stylish and contemporary design. The property includes a 1-car enclosed garage and driveway parking, The second level boasts a spacious open-concept living area with a luxurious quartz island countertop, high-end shaker-style cabinets with soft-closing features, and upgraded Whirlpool stainless steel appliances for a premium cooking experience. The third level features two additional bedrooms, each with its own full-sized bathroom. Situated by the popular Festival Street, this property offers easy access to nearby businesses and amenities. **Sale Conditions:** None **Schools:** , , \* [Request Showing](#), [Photos](#), [History](#), [Maps](#), [Deed](#), [Watch List](#), [Tax Info](#)





Address	Price	Bd & Bth	Living / Avg.	Land   Avg.	DOM
<a href="#">91-3525 Kauluakoko Street 2505</a>	<a href="#">\$835,000</a>	3 & 3/1	1,531   \$545	0   \$inf	8

Address	Tax   Maint.   Ass.	Assessed Land	Assessed Building	Assessed Total	Ratio	Year & Remodeled
<a href="#">91-3525 Kauluakoko Street 2505</a>	\$207   \$554   \$72	\$247,000	\$465,400	\$703,400	119%	2021 & NA

[91-3525 Kauluakoko Street 2505](#) - MLS#: [202415164](#) - Discover your dream home in the heart of the Kohina at Hoopili community! Built in 2021, this stunning 3-bed, 3.5-bath townhouse offers versatility and modern elegance. The first floor features a full bedroom and bathroom, with three separate entrances for maximum convenience and privacy. As you enter this almost brand-new townhouse, you'll be captivated by its stylish and contemporary design. The property includes a 1-car enclosed garage and driveway parking, The second level boasts a spacious open-concept living area with a luxurious quartz island countertop, high-end shaker-style cabinets with soft-closing features, and upgraded Whirlpool stainless steel appliances for a premium cooking experience. The third level features two additional bedrooms, each with its own full-sized bathroom. Situated by the popular Festival Street, this property offers easy access to nearby businesses and amenities.

**Region:** Ewa Plain **Neighborhood:** Hoopili-kohina **Condition:** Excellent, Above Average **Parking:** Assigned, Garage, Guest **Total Parking:** 2 **View:** None **Frontage:** Other **Pool:** **Zoning:** 17 - AMX-2 Medium Density Apt M **Sale Conditions:** None **Schools:** , , \* [Request Showing](#), [Photos](#), [History](#), [Maps](#), [Deed](#), [Watch List](#), [Tax Info](#)

DOM = Days on Market