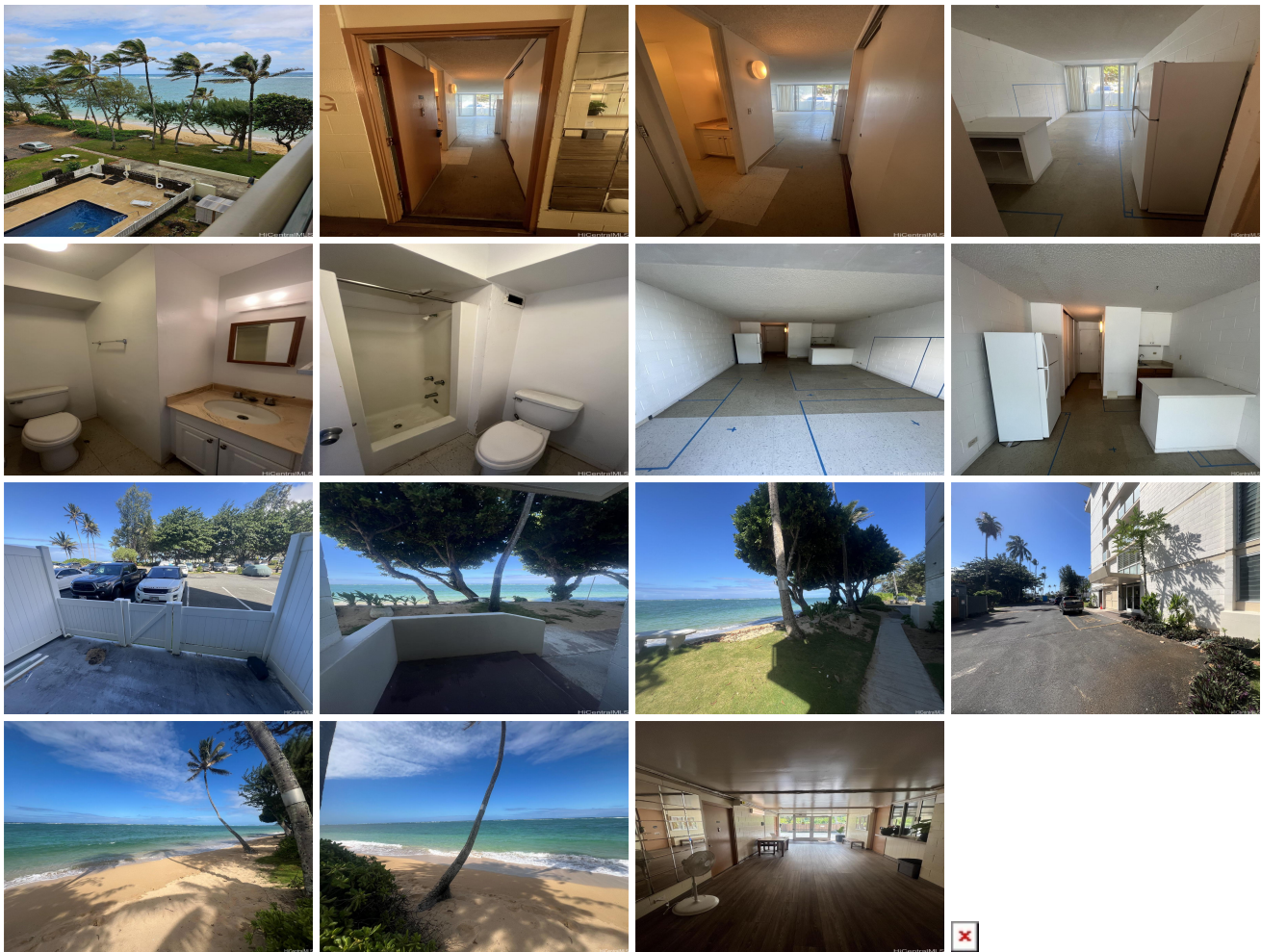


Hanohano Hale 53-549 Kamehameha Highway Unit 116, Hauula 96717 * \$115,000

Beds: 0	MLS#: 202415212, FS	Year Built: 1973
Bath: 1/0	Status: Active	Remodeled:
Living Sq. Ft.: 358	List Date & DOM: 07-14-2024 & 2	Total Parking: 1
Land Sq. Ft.: 0	Condition: Fair	Assessed Value
Lanai Sq. Ft.: 0	Ocean, Sandy Beach, Waterfront	Building: \$80,500
Sq. Ft. Other: 0	Tax/Year: \$25/2023	Land: \$48,100
Total Sq. Ft. 358	Neighborhood: Punaluu	Total: \$128,600
Maint./Assoc. \$649 / \$0	Flood Zone : Zone VE - Tool	Stories / CPR: One / No
Parking: Assigned, Guest	Frontage: Ocean, Sandy Beach, Waterfront	View: Mountain, Ocean, Sunrise
Zoning : 12 - A-2 Medium Density Apartme		

Public Remarks: Lowest priced studio, with open lanai, easy access to studio from parking lot to lanai and/or via lobby. Contractor special, to remodel per buyer specifications, may be ADA accessible. Lowest priced beachfront condo in Windward area. Comes with one assigned parking space and plenty of guest parking. Buyer to do their own due diligence. Property Sold As-Is. **Sale Conditions:** None **Schools:** , , * [Request Showing](#), [Photos](#), [History](#), [Maps](#), [Deed](#), [Watch List](#), [Tax Info](#)



Address	Price	Bd & Bth	Living / Avg.	Land Avg.	DOM
53-549 Kamehameha Highway 116	\$115,000	0 & 1/0	358 \$321	0 \$inf	2

Address	Tax Maint. Ass.	Assessed Land	Assessed Building	Assessed Total	Ratio	Year & Remodeled
53-549 Kamehameha Highway 116	\$25 \$649 \$0	\$48,100	\$80,500	\$128,600	89%	1973 & NA

[53-549 Kamehameha Highway 116](#) - MLS#: [202415212](#) - Lowest priced studio, with open lanai, easy access to studio from parking lot to lanai and/or via lobby. Contractor special, to remodel per buyer specifications, may be ADA accessible. Lowest priced beachfront condo in Windward area. Comes with one assigned parking space and plenty of guest parking. Buyer to do their own due diligence. Property Sold As-Is. **Region:** Kaneohe **Neighborhood:** Punaluu **Condition:** Fair **Parking:** Assigned, Guest **Total Parking:** 1 **View:** Mountain, Ocean, Sunrise **Frontage:** Ocean,Sandy Beach,Waterfront **Pool:** **Zoning:** 12 - A-2 Medium Density Apartme **Sale Conditions:** None **Schools:** , , * [Request Showing](#), [Photos](#), [History](#), [Maps](#), [Deed](#), [Watch List](#), [Tax Info](#)

DOM = Days on Market