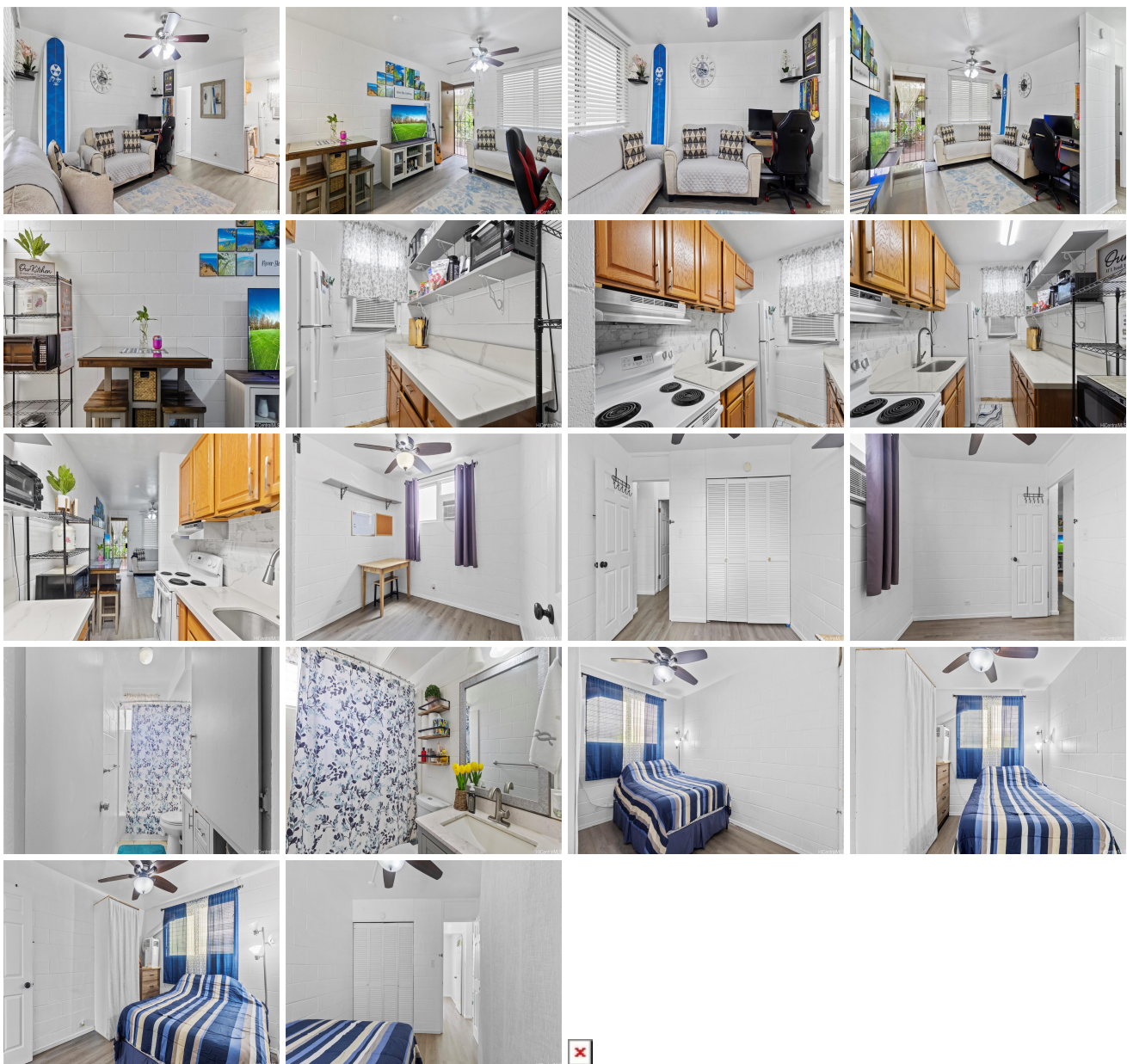


**Su Casa 94-245 Leowahine Street Unit 130, Waipahu 96797 \* Su Casa \* \$320,000**

Beds: <b>2</b>	MLS#: <b>202415233, FS</b>	Year Built: <b>1968</b>
Bath: <b>1/0</b>	Status: <b>Active</b>	Remodeled: <b>2023</b>
Living Sq. Ft.: <b>598</b>	List Date & DOM: <b>07-01-2024 &amp; 12</b>	Total Parking: <b>1</b>
Land Sq. Ft.: <b>165,746</b>	Condition: <b>Excellent</b>	<a href="#">Assessed Value</a>
Lanai Sq. Ft.: <b>0</b>	Frontage: <b>Other</b>	Building: <b>\$202,800</b>
Sq. Ft. Other: <b>0</b>	Tax/Year: <b>\$70/2023</b>	Land: <b>\$77,100</b>
Total Sq. Ft. <b>598</b>	Neighborhood: <b>Waipahu-lower</b>	Total: <b>\$279,900</b>
Maint./Assoc. <b>\$368 / \$0</b>	<a href="#">Flood Zone</a> : <b>Zone D - Tool</b>	Stories / CPR: <b>Three / No</b>
Parking: <b>Assigned, Open - 1</b>	Frontage: <b>Other</b>	
<a href="#">Zoning</a> : <b>12 - A-2 Medium Density Apartme</b>	View: <b>None</b>	

**Public Remarks:** Welcome to Su Casa at Waipahu! This ground floor 2-bedroom, 1-bath condo/townhouse features new vinyl flooring and a water heater. The unit comes with appliances, ceiling fan, and window AC for your comfort. Enjoy the convenience of an excellent location close to restaurants, shops, railway, bus stops, and more. The low maintenance fee includes water, sewer, and one assigned parking space. Don't miss out on this fantastic opportunity to own a cozy and convenient home in a great community! **Sale Conditions:** None, Subject To Repl. Property **Schools:** , , \* [Request Showing](#), [Photos](#), [History](#), [Maps](#), [Deed](#), [Watch List](#), [Tax Info](#)



Address	Price	Bd & Bth	Living / Avg.	Land   Avg.	Lanai	Occ.	FL	DOM
<a href="#">94-245 Leowahine Street 130</a>	<a href="#">\$320,000</a>	2 & 1/0	598   \$535	165,746   \$2	0	50%	0	12

Address	Tax   Maint.   Ass.	Assessed Land	Assessed Building	Assessed Total	Ratio	Year & Remodeled
<a href="#">94-245 Leowahine Street 130</a>	\$70   \$368   \$0	\$77,100	\$202,800	\$279,900	114%	1968 & 2023

[94-245 Leowahine Street 130](#) - MLS#: [202415233](#) - Welcome to Su Casa at Waipahu! This ground floor 2-bedroom, 1-bath condo/townhouse features new vinyl flooring and a water heater. The unit comes with appliances, ceiling fan, and window AC for your comfort. Enjoy the convenience of an excellent location close to restaurants, shops, railway, bus stops, and more. The low maintenance fee includes water, sewer, and one assigned parking space. Don't miss out on this fantastic opportunity to own a cozy and convenient home in a great community! **Region:** Waipahu **Neighborhood:** Waipahu-lower **Condition:** Excellent **Parking:** Assigned, Open - 1 **Total Parking:** 1 **View:** None **Frontage:** Other **Pool:** **Zoning:** 12 - A-2 Medium Density Apartme **Sale Conditions:** None, Subject To Repl. Property **Schools:** , , \* [Request Showing](#), [Photos](#), [History](#), [Maps](#), [Deed](#), [Watch List](#), [Tax Info](#)

DOM = Days on Market, Occ. = Occupancy, FL = Floor Number