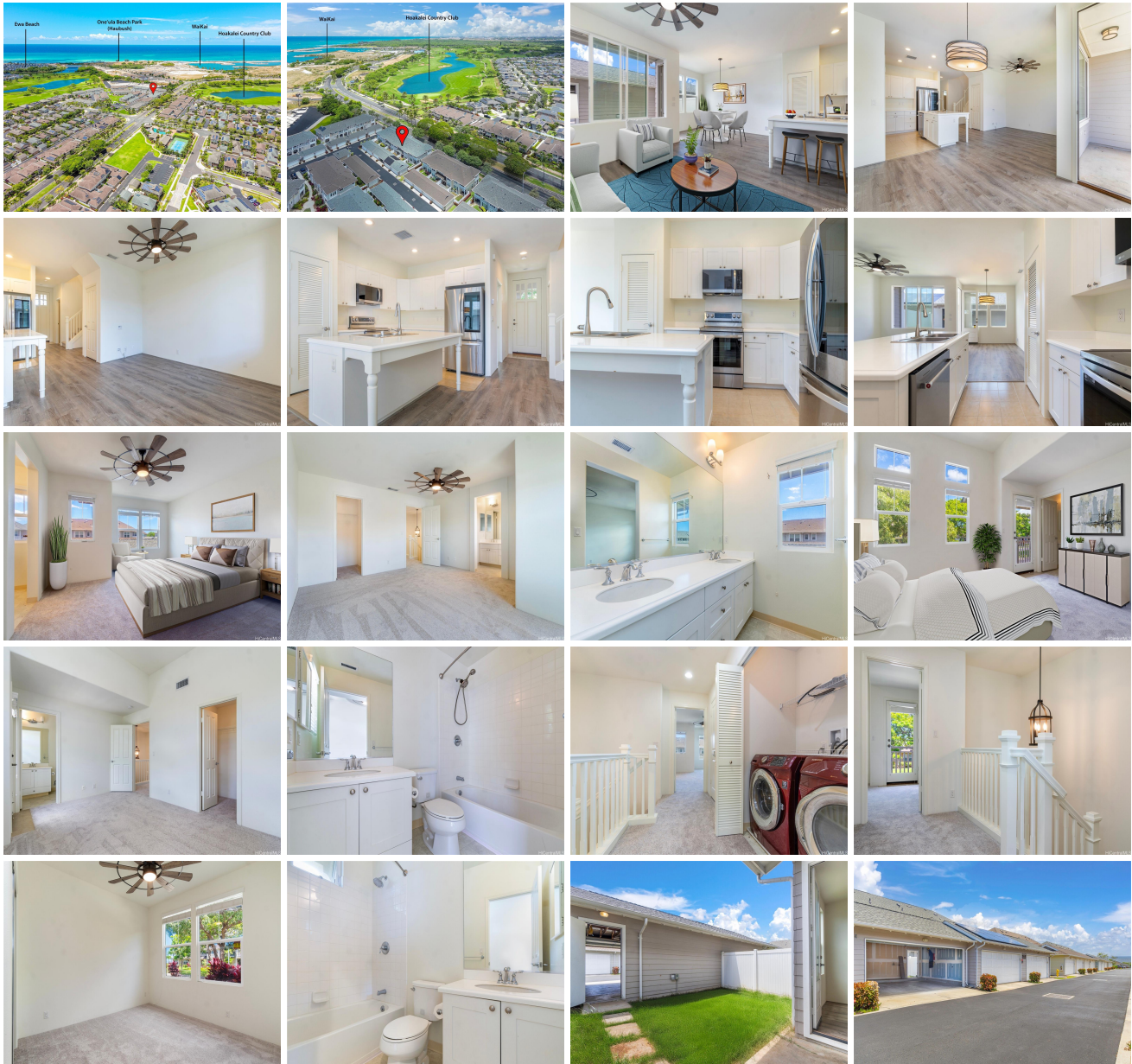


Lei Pauku at Hoakalei 91-2220 Kaiwawalo Street Unit 8803, Ewa Beach 96706 * \$805,000

Beds: 3	MLS#: 202415293, FS	Year Built: 2017
Bath: 3/0	Status: Active	Remodeled:
Living Sq. Ft.: 1,376	List Date & DOM: 07-08-2024 & 8	Total Parking: 2
Land Sq. Ft.: 0	Condition: Excellent	Assessed Value
Lanai Sq. Ft.: 0	Frontage:	Building: \$529,100
Sq. Ft. Other: 0	Tax/Year: \$247/2024	Land: \$296,200
Total Sq. Ft. 1,376	Neighborhood: Hoakalei-lei Pauku	Total: \$825,300
Maint./Assoc. \$764 / \$0	Flood Zone : Zone D - Tool	Stories / CPR: / No
Parking: Garage, Guest	Frontage:	
Zoning : 05 - R-5 Residential District	View: Garden, Mountain, Sunrise, Sunset	

Public Remarks: Here is your opportunity to own this beautiful 3 bedroom with two en suites, 3 bath townhome with 1,376 sqft of living space, a fenced backyard & 2 car garage in the highly desired Resort Community of Lei Pauku At Hoakalei. New paint and carpet has just been done throughout. This home boast an open concept with the kitchen showcasing brand new stainless steel appliances (stove, microwave, dishwasher) and refrigerator only 2 yrs young. The main level boast newly installed luxury vinyl flooring, high ceiling, plus a bedroom & full bath. Enjoy central AC plus ceiling fans. Well maintained community with lots of guest parking. Lei Pauku offers resort style amenities just steps away to include private access to Wai Kai Hale Residence Club, Wai Kai Wave pool with numerous restaurants and food truck night every Thursdays that has dozens of food vendors and Hoakalei Championship Golf Course that host the Women's LPGA Lotte Championship. Monthly fees includes: Maintenance Fee \$626.94, Hoakalei Master Association \$40.00, Wai Kai Hale Private Residence Club \$20.00, Spectrum Package \$76.82 (cable, internet, phone). **Sale Conditions:** None **Schools:** [Keoneula](#), [Ewa Makai](#), [Campbell](#) * [Request Showing](#), [Photos](#), [History](#), [Maps](#), [Deed](#), [Watch List](#), [Tax Info](#)





Address	Price	Bd & Bth	Living / Avg.	Land Avg.	DOM
91-2220 Kaiwawalo Street 8803	\$805,000	3 & 3/0	1,376 \$585	0 \$inf	8

Address	Tax Maint. Ass.	Assessed Land	Assessed Building	Assessed Total	Ratio	Year & Remodeled
91-2220 Kaiwawalo Street 8803	\$247 \$764 \$0	\$296,200	\$529,100	\$825,300	98%	2017 & NA

[91-2220 Kaiwawalo Street 8803](#) - MLS#: [202415293](#) - Here is your opportunity to own this beautiful 3 bedroom with two en suites, 3 bath townhome with 1,376 sqft of living space, a fenced backyard & 2 car garage in the highly desired Resort Community of Lei Pauku At Hoakalei. New paint and carpet has just been done throughout. This home boast an open concept with the kitchen showcasing brand new stainless steel appliances (stove, microwave, dishwasher) and refrigerator only 2 yrs young. The main level boast newly installed luxury vinyl flooring, high ceiling, plus a bedroom & full bath. Enjoy central AC plus ceiling fans. Well maintained community with lots of guest parking. Lei Pauku offers resort style amenities just steps away to include private access to Wai Kai Hale Residence Club, Wai Kai Wave pool with numerous restaurants and food truck night every Thursdays that has dozens of food vendors and Hoakalei Championship Golf Course that host the Women's LPGA Lotte Championship. Monthly fees includes: Maintenance Fee \$626.94, Hoakalei Master Association \$40.00, Wai Kai Hale Private Residence Club \$20.00, Spectrum Package \$76.82 (cable, internet, phone). **Region:** Ewa Plain **Neighborhood:** Hoakalei-lei Pauku **Condition:** Excellent **Parking:** Garage, Guest **Total Parking:** 2 **View:** Garden, Mountain, Sunrise, Sunset **Frontage:** **Pool:** **Zoning:** 05 - R-5 Residential District **Sale Conditions:** None **Schools:** [Keoneula](#), [Ewa Makai](#), [Campbell](#) * [Request Showing](#), [Photos](#), [History](#), [Maps](#), [Deed](#), [Watch List](#), [Tax Info](#)

DOM = Days on Market