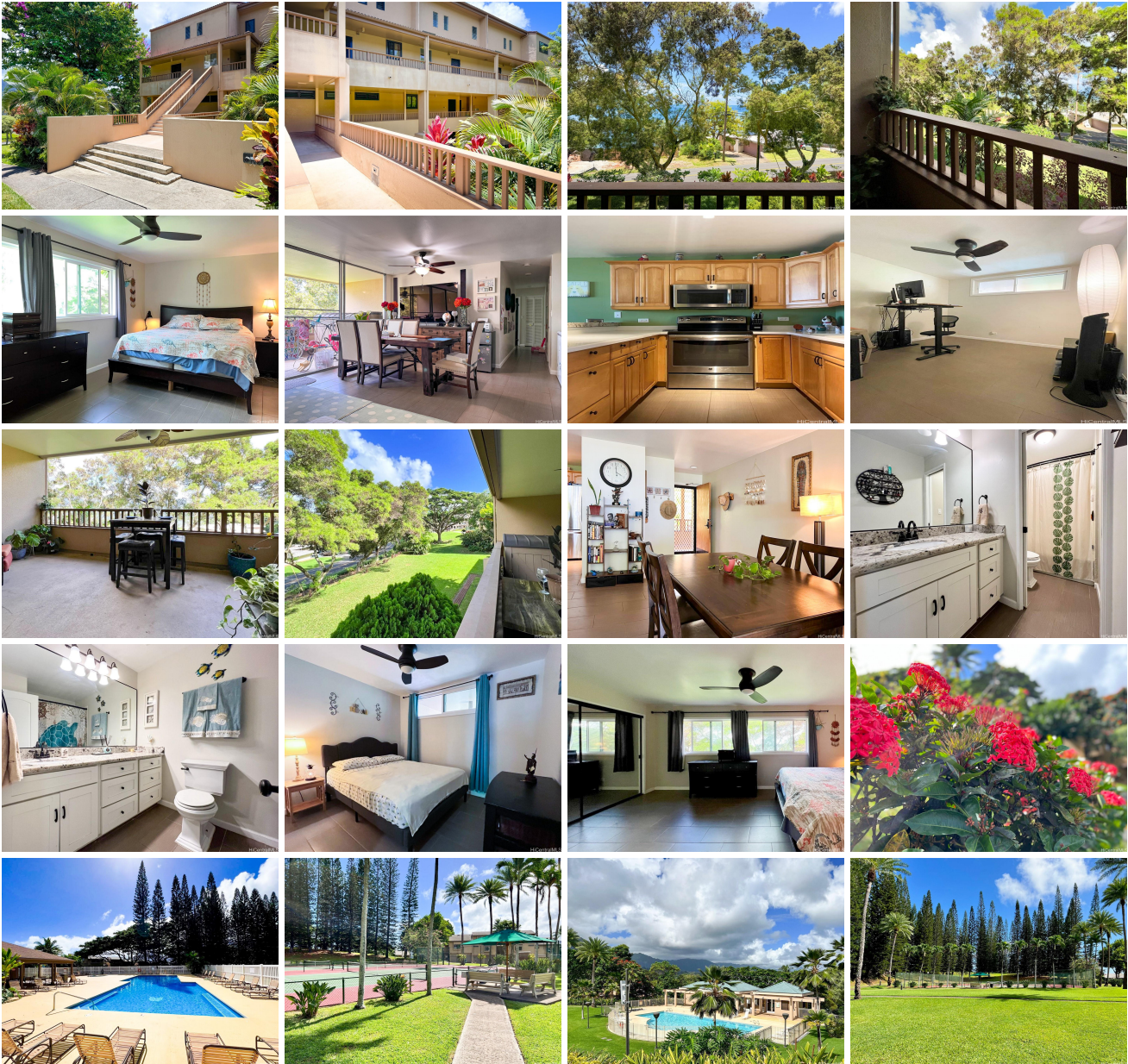


Poha Kea Point 3 46-109 Konohiki Street Unit 3922, Kaneohe 96744 * \$899,000

Beds: 3	MLS#: <u>202415308</u>, FS	Year Built: 1986
Bath: 2/0	Status: Active	Remodeled:
Living Sq. Ft.: 1,093	List Date & DOM: 07-03-2024 & 10	Total Parking: 2
Land Sq. Ft.: 669,517	Condition: Excellent	Assessed Value
Lanai Sq. Ft.: 165	Frontage:	Building: \$508,900
Sq. Ft. Other: 0	Tax/Year: \$200/2023	Land: \$333,200
Total Sq. Ft. 1,258	Neighborhood: Lilipuna	Total: \$842,100
Maint./Assoc. \$592 / \$623	Flood Zone : Zone X - Tool	Stories / CPR: / No
Parking: Covered - 1, Open - 1	Frontage:	
Zoning : 03 - R10 - Residential District	View: Garden, Ocean	

Public Remarks: Welcome to Poha Kea! This spacious 3-bed, 2-bath unit offers stunning treetop views of Kaneohe Bay. Enjoy a tastefully updated home featuring stainless steel appliances and large sliding doors open to an expansive lanai, perfect for taking in the breathtaking Kaneohe Bay and Koolau Mountains. The sizeable primary suite provides ample square footage and generous closet space. Poha Kea is a beautifully maintained, pet-friendly community with resort-style amenities, including three pools, spas, a clubhouse, sauna, tennis courts, barbecue pavilions, walking/jogging paths, and security patrols. You'll have excellent access to everything Kaneohe offers, including the Marine Corps Base, water sports, shopping, dining, entertainment, and easy freeway access. This exceptional unit also comes with two convenient parking stalls. Welcome home! **Sale Conditions:** None **Schools:** , , * [Request Showing](#), [Photos](#), [History](#), [Maps](#), [Deed](#), [Watch List](#), [Tax Info](#)





Address	Price	Bd & Bth	Living / Avg.	Land Avg.	DOM
46-109 Konohiki Street 3922	\$899,000	3 & 2/0	1,093 \$823	669,517 \$1	10

Address	Tax Maint. Ass.	Assessed Land	Assessed Building	Assessed Total	Ratio	Year & Remodeled
46-109 Konohiki Street 3922	\$200 \$592 \$623	\$333,200	\$508,900	\$842,100	107%	1986 & NA

[46-109 Konohiki Street 3922](#) - MLS#: [202415308](#) - Welcome to Poha Kea! This spacious 3-bed, 2-bath unit offers stunning treetop views of Kaneohe Bay. Enjoy a tastefully updated home featuring stainless steel appliances and large sliding doors open to an expansive lanai, perfect for taking in the breathtaking Kaneohe Bay and Koolau Mountains. The sizeable primary suite provides ample square footage and generous closet space. Poha Kea is a beautifully maintained, pet-friendly community with resort-style amenities, including three pools, spas, a clubhouse, sauna, tennis courts, barbecue pavilions, walking/jogging paths, and security patrols. You'll have excellent access to everything Kaneohe offers, including the Marine Corps Base, water sports, shopping, dining, entertainment, and easy freeway access. This exceptional unit also comes with two convenient parking stalls. Welcome home! **Region:** Kaneohe **Neighborhood:** Lilipuna **Condition:** Excellent **Parking:** Covered - 1, Open - 1 **Total Parking:** 2 **View:** Garden, Ocean **Frontage:** **Pool:** **Zoning:** 03 - R10 - Residential District **Sale Conditions:** None **Schools:** , , * [Request Showing](#), [Photos](#), [History](#), [Maps](#), [Deed](#), [Watch List](#), [Tax Info](#)

DOM = Days on Market