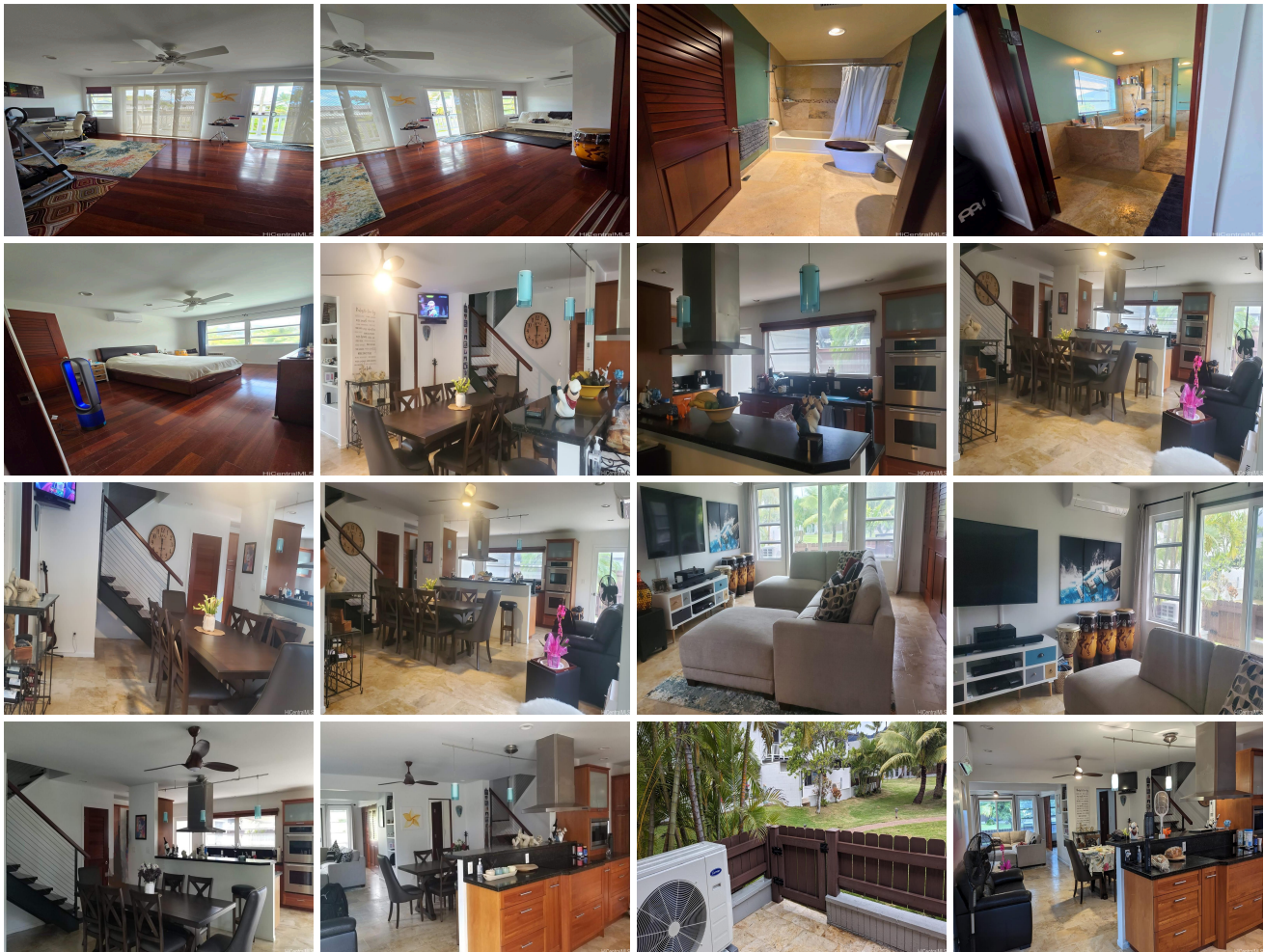
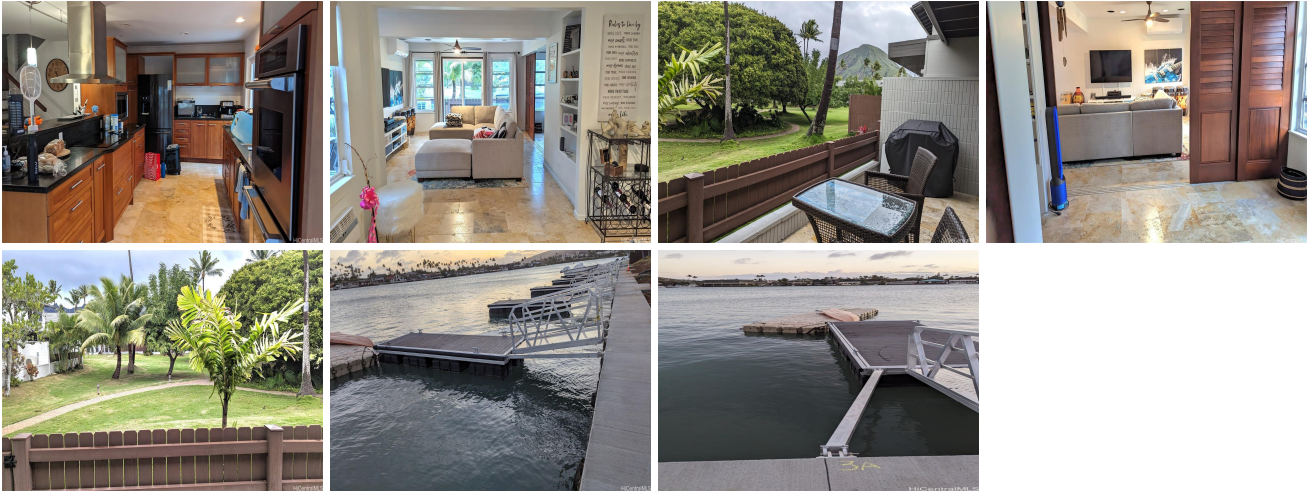


Koko Isle 218 Koko Isle Circle Unit 1709, Honolulu 96825 * Koko Isle * \$1,600,000

Beds: 3	MLS#: 202415395, FS	Year Built: 1968
Bath: 3/0	Status: Active Under Contract	Remodeled: 2007
Living Sq. Ft.: 2,081	List Date & DOM: 07-03-2024 & 7	Total Parking: 2
Land Sq. Ft.: 0	Condition: Excellent, Above Average	Assessed Value
Lanai Sq. Ft.: 0	Frontage: Other	Building: \$563,400
Sq. Ft. Other: 0	Tax/Year: \$335/2023	Land: \$708,200
Total Sq. Ft. 2,081	Neighborhood: West Marina	Total: \$1,271,600
Maint./Assoc. \$970 / \$0	Flood Zone : Zone X - Tool	Stories / CPR: Two, Split Level / No
Parking: Carport, Covered - 2	Frontage: Other	
Zoning : 11 - A-1 Low Density Apartment	View: Garden, Mountain	

Public Remarks: Motivated sellers! Discerning buyers will appreciate the exceptional quality and meticulous attention to detail in this exquisitely renovated 3 bedroom/3 bath townhome in the esteemed Koko Isle community. With one of the largest floor plans, this residence boasts an open-concept kitchen featuring high-end appliances, granite countertops, sophisticated Murano glass pendant lighting and New Split AC added in the unit . The expansive living area seamlessly flows into a private lanai, offering a tranquil view of the park. The home features a primary bedroom with mountain views, a private bath, and a large custom walk-in closet. Additionally, there is a third bedroom with a full bath and separate entrance, as well as an oversized second bedroom with a private lanai and custom closet. Boat dock in the community is available and fully paid for 15 years for the new owner to use. Enjoy resort-style living with uncompromising quality, privacy, and ample guest parking in the Koko Isle community, complete with a waterfront swimming pool, beautifully landscaped parks, and recreational facilities. **Sale Conditions:** None **Schools:** , , * [Request Showing](#), [Photos](#), [History](#), [Maps](#), [Deed](#), [Watch List](#), [Tax Info](#)





Address	Price	Bd & Bth	Living / Avg.	Land Avg.	Lanai	Occ.	FL	DOM
218 Koko Isle Circle 1709	\$1,600,000	3 & 3/0	2,081 \$769	0 \$inf	0	71%	0	7

Address	Tax Maint. Ass.	Assessed Land	Assessed Building	Assessed Total	Ratio	Year & Remodeled
218 Koko Isle Circle 1709	\$335 \$970 \$0	\$708,200	\$563,400	\$1,271,600	126%	1968 & 2007

[218 Koko Isle Circle 1709](#) - MLS#: [202415395](#) - Motivated sellers! Discerning buyers will appreciate the exceptional quality and meticulous attention to detail in this exquisitely renovated 3 bedroom/3 bath townhome in the esteemed Koko Isle community. With one of the largest floor plans, this residence boasts an open-concept kitchen featuring high-end appliances, granite countertops, sophisticated Murano glass pendant lighting and New Split AC added in the unit . The expansive living area seamlessly flows into a private lanai, offering a tranquil view of the park. The home features a primary bedroom with mountain views, a private bath, and a large custom walk-in closet. Additionally, there is a third bedroom with a full bath and separate entrance, as well as an oversized second bedroom with a private lanai and custom closet. Boat dock in the community is available and fully paid for 15 years for the new owner to use. Enjoy resort-style living with uncompromising quality, privacy, and ample guest parking in the Koko Isle community, complete with a waterfront swimming pool, beautifully landscaped parks, and recreational facilities. **Region:** Hawaii Kai **Neighborhood:** West Marina **Condition:** Excellent, Above Average **Parking:** Carport, Covered - 2 **Total Parking:** 2 **View:** Garden, Mountain **Frontage:** Other **Pool:** **Zoning:** 11 - A-1 Low Density Apartment **Sale Conditions:** None **Schools:** , , * [Request Showing](#), [Photos](#), [History](#), [Maps](#), [Deed](#), [Watch List](#), [Tax Info](#)

DOM = Days on Market, Occ. = Occupancy, FL = Floor Number