

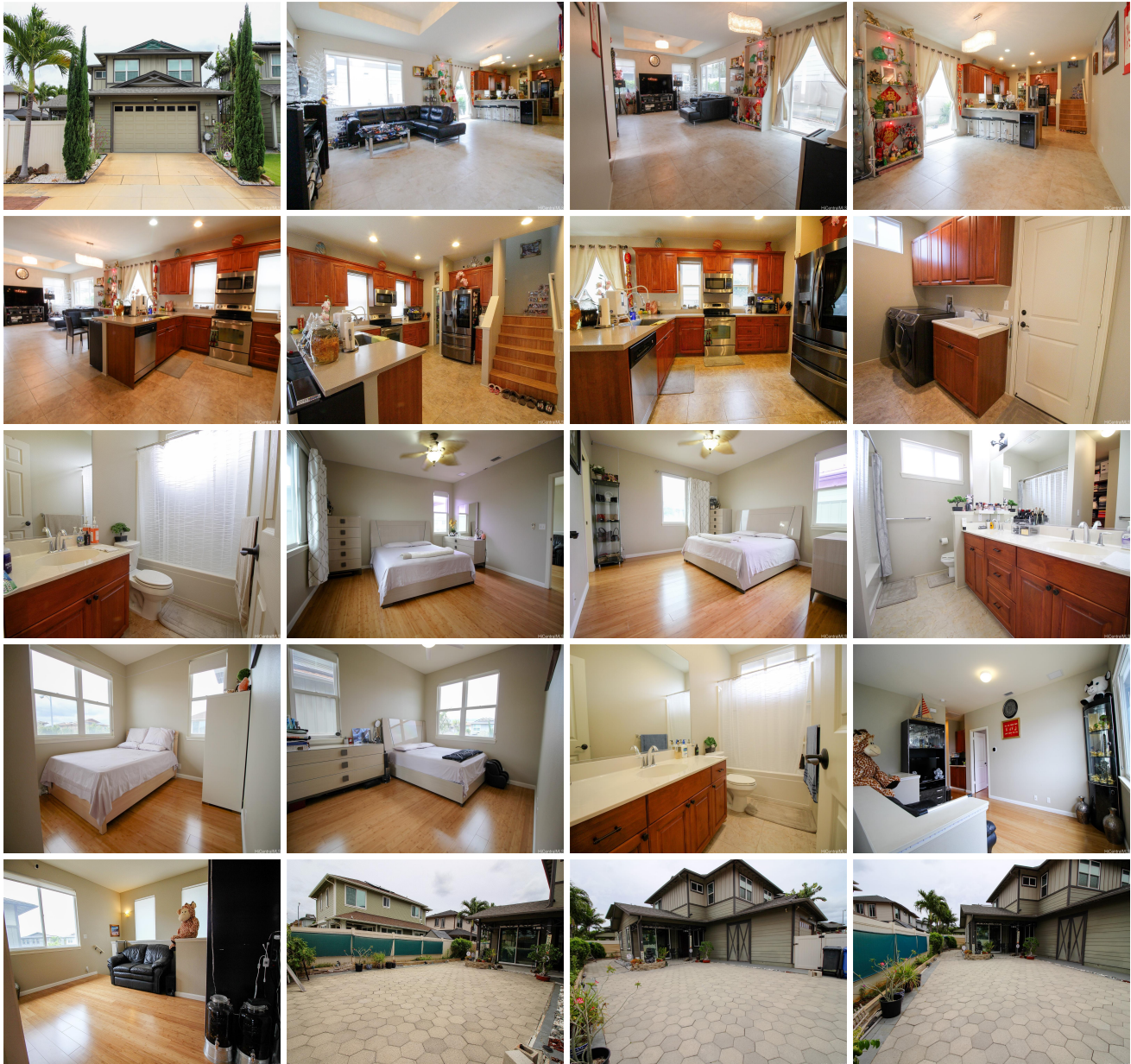
**91-1091 Hoilili Street, Ewa Beach 96706 \* \$1,125,000**

Beds: **4**  
Bath: **3/0**  
Living Sq. Ft.: **1,821**  
Land Sq. Ft.: **3,796**  
Lanai Sq. Ft.: **0**  
Sq. Ft. Other: **126**  
Total Sq. Ft. **1,947**  
Maint./Assoc. **\$0 / \$50**  
Parking: **3 Car+**  
**Zoning: 05 - R-5 Residential District**

MLS#: **202415398, FS**  
Status: **Active**  
List Date & DOM: **07-02-2024 & 15**  
Condition: **Excellent**  
Frontage:  
Tax/Year: **\$258/2023**  
Neighborhood: **Ewa Gen Sandalwood**  
**Flood Zone: Zone D - Tool**

Year Built: **2013**  
Remodeled:  
Total Parking: **4**  
[Assessed Value](#)  
Building: **\$442,800**  
Land: **\$636,200**  
Total: **\$1,079,000**  
Stories / CPR: **Two / No**  
Frontage:  
View: **None**

**Public Remarks:** Don't miss your chance with this beautiful home opportunity! This nine feet high ceiling 4 bedroom/3 full bathroom property includes a camera security system and 7 owned photovoltaic panels for higher sense of safety and lower monthly electricity bills. Downstairs has 1 bedroom/1 bathroom with living room and kitchen while upstairs has 3 bedrooms, 2 bathrooms with an extra entertainment area. The primary bedroom includes a spacious walk-in closet. Home interior has upgraded ceramic tile and bamboo flooring. The low-maintenance yard is mainly covered with concrete pavers but not cemented so it's easy to change back to grass. The yard is large enough for gatherings, parties, and kids' playground. This house is walking distance to Laulani Village Shopping Center where you can access your grocery store, hardware store, pet store, banks, and many restaurants. Golf course and various parks are also nearby. Request to see the property today; the house will take your breath away! **Sale Conditions:** None **Schools:** , , \* [Request Showing](#), [Photos](#), [History](#), [Maps](#), [Deed](#), [Watch List](#), [Tax Info](#)





Address	Price	Bd & Bth	Living / Avg.	Land   Avg.	DOM
<a href="#">91-1091 Hoiliili Street</a>	<a href="#">\$1,125,000</a>	4 & 3/0	1,821   \$618	3,796   \$296	15

Address	Tax   Maint.   Ass.	Assessed Land	Assessed Building	Assessed Total	Ratio	Year & Remodeled
<a href="#">91-1091 Hoiliili Street</a>	\$258   \$0   \$50	\$636,200	\$442,800	\$1,079,000	104%	2013 & NA

[91-1091 Hoiliili Street](#) - MLS#: [202415398](#) - Don't miss your chance with this beautiful home opportunity! This nine feet high ceiling 4 bedroom/3 full bathroom property includes a camera security system and 7 owned photovoltaic panels for higher sense of safety and lower monthly electricity bills. Downstairs has 1 bedroom/1 bathroom with living room and kitchen while upstairs has 3 bedrooms, 2 bathrooms with an extra entertainment area. The primary bedroom includes a spacious walk-in closet. Home interior has upgraded ceramic tile and bamboo flooring. The low-maintenance yard is mainly covered with concrete pavers but not cemented so it's easy to change back to grass. The yard is large enough for gatherings, parties, and kids' playground. This house is walking distance to Laulani Village Shopping Center where you can access your grocery store, hardware store, pet store, banks, and many restaurants. Golf course and various parks are also nearby. Request to see the property today; the house will take your breath away! **Region:** Ewa Plain **Neighborhood:** Ewa Gen Sandalwood **Condition:** Excellent **Parking:** 3 Car+ **Total Parking:** 4 **View:** None **Frontage:** **Pool:** None **Zoning:** 05 - R-5 Residential District **Sale Conditions:** None **Schools:** , , \* [Request Showing](#), [Photos](#), [History](#), [Maps](#), [Deed](#), [Watch List](#), [Tax Info](#)

DOM = Days on Market