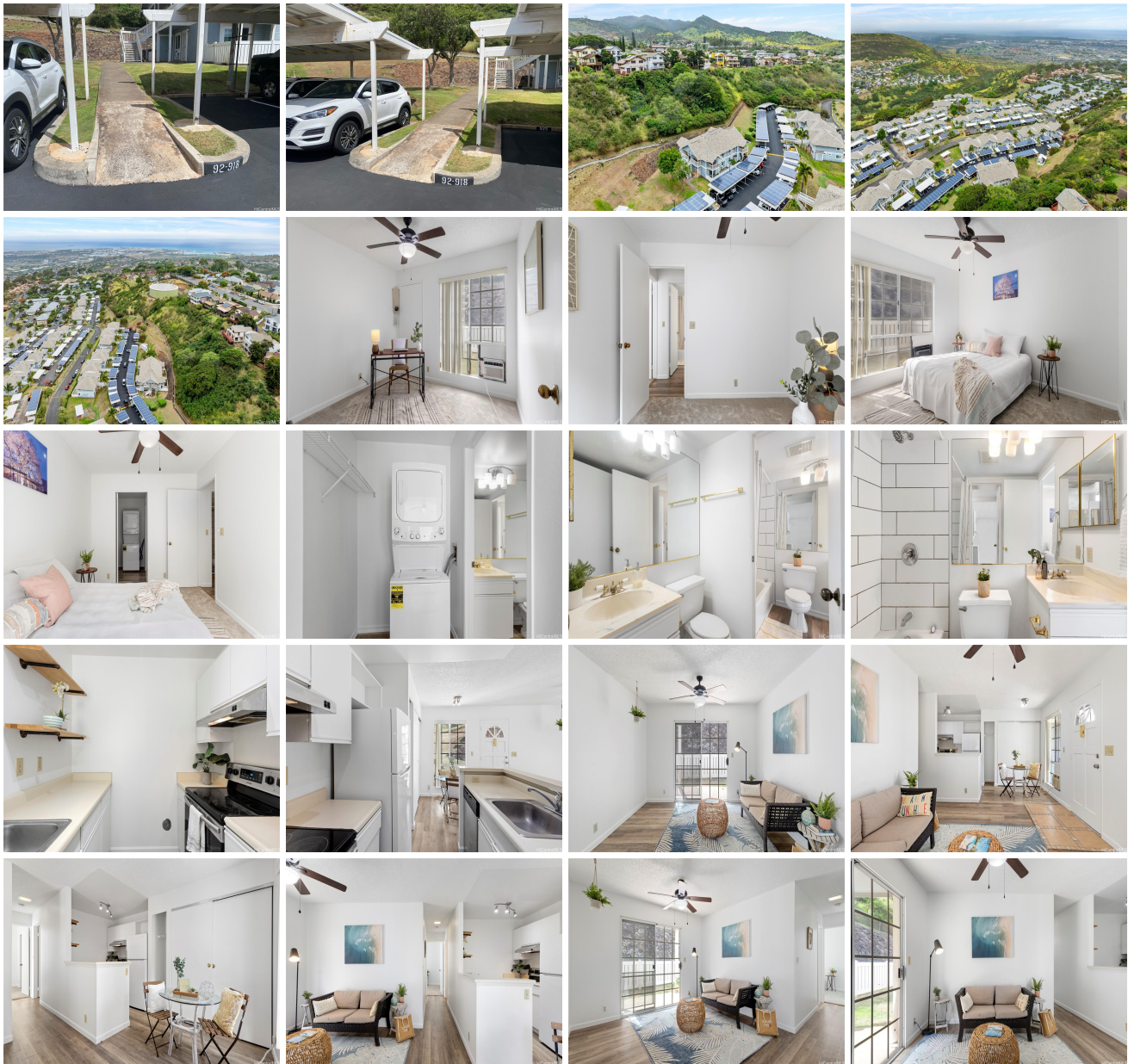


Makakilo Cliffs 92-918 Hame Place Unit 102, Kapolei 96707 * Makakilo Cliffs * \$502,000

Beds: 2	MLS#: <u>202415571</u> , FS	Year Built: 1991
Bath: 1/1	Status: Active	Remodeled: 2024
Living Sq. Ft.: 756	List Date & DOM: 07-12-2024 & 1	Total Parking: 2
Land Sq. Ft.: 1,033,025	Condition: Excellent, Above Average	Assessed Value
Lanai Sq. Ft.: 0	Frontage:	Building: \$269,400
Sq. Ft. Other: 0	Tax/Year: \$145/2023	Land: \$232,800
Total Sq. Ft. 756	Neighborhood: Makakilo-upper	Total: \$502,200
Maint./Assoc. \$655 / \$0	Flood Zone : Zone D - Tool	Stories / CPR: One / No
Parking: Covered - 2	Frontage:	
Zoning : 11 - A-1 Low Density Apartment	View: None	

Public Remarks: Great opportunity awaits you at Makakilo Cliffs! Perched up on the hillside and away from busy Makakilo Drive. This ground level 2 bedroom unit is well maintained and features vinyl floors throughout for easy maintenance and brand new carpets in the bedrooms. Enjoy morning coffee or an afternoon beverage in your spacious fenced yard. 2 deeded parking spaces are nearby with ample guest parking for your guests as well. Property also features a great BBQ area that is perfect for quick grilling or parties. Close proximity to bus lines, Malama Market, H-1 Freeway, Walmart & Costco and all the conveniences that Kapolei town has to offer. Easy to show this vacant unit, Schedule your private showing today! **Sale**

Conditions: None **Schools:** [Mauka Lani](#), , * [Request Showing](#), [Photos](#), [History](#), [Maps](#), [Deed](#), [Watch List](#), [Tax Info](#)





Address	Price	Bd & Bth	Living / Avg.	Land Avg.	Lanai	Occ.	FL	DOM
92-918 Hame Place 102	\$502,000	2 & 1/1	756 \$664	1,033,025 \$0	0	40%	1	1

Address	Tax Maint. Ass.	Assessed Land	Assessed Building	Assessed Total	Ratio	Year & Remodeled
92-918 Hame Place 102	\$145 \$655 \$0	\$232,800	\$269,400	\$502,200	100%	1991 & 2024

[92-918 Hame Place 102](#) - MLS#: [202415571](#) - Great opportunity awaits you at Makakilo Cliffs! Perched up on the hillside and away from busy Makakilo Drive. This ground level 2 bedroom unit is well maintained and features vinyl floors throughout for easy maintenance and brand new carpets in the bedrooms. Enjoy morning coffee or an afternoon beverage in your spacious fenced yard. 2 deeded parking spaces are nearby with ample guest parking for your guests as well. Property also features a great BBQ area that is perfect for quick grilling or parties. Close proximity to bus lines, Malama Market, H-1 Freeway, Walmart & Costco and all the conveniences that Kapolei town has to offer. Easy to show this vacant unit, Schedule your private showing today! **Region:** Makakilo **Neighborhood:** Makakilo-upper **Condition:** Excellent, Above Average **Parking:** Covered - 2 **Total Parking:** 2 **View:** None **Frontage:** **Pool:** **Zoning:** 11 - A-1 Low Density Apartment **Sale Conditions:** None **Schools:** [Mauka Lani](#), , * [Request Showing](#), [Photos](#), [History](#), [Maps](#), [Deed](#), [Watch List](#), [Tax Info](#)

DOM = Days on Market, Occ. = Occupancy, FL = Floor Number