

94-1508 Waipahu Street, Waipahu 96797 * * \$960,000

Beds: **5**
Bath: **3/0**
Living Sq. Ft.: **2,070**
Land Sq. Ft.: **6,000**
Lanai Sq. Ft.: **0**
Sq. Ft. Other: **0**
Total Sq. Ft. **2,070**
Maint./Assoc. **\$0 / \$0**
Parking: **2 Car**

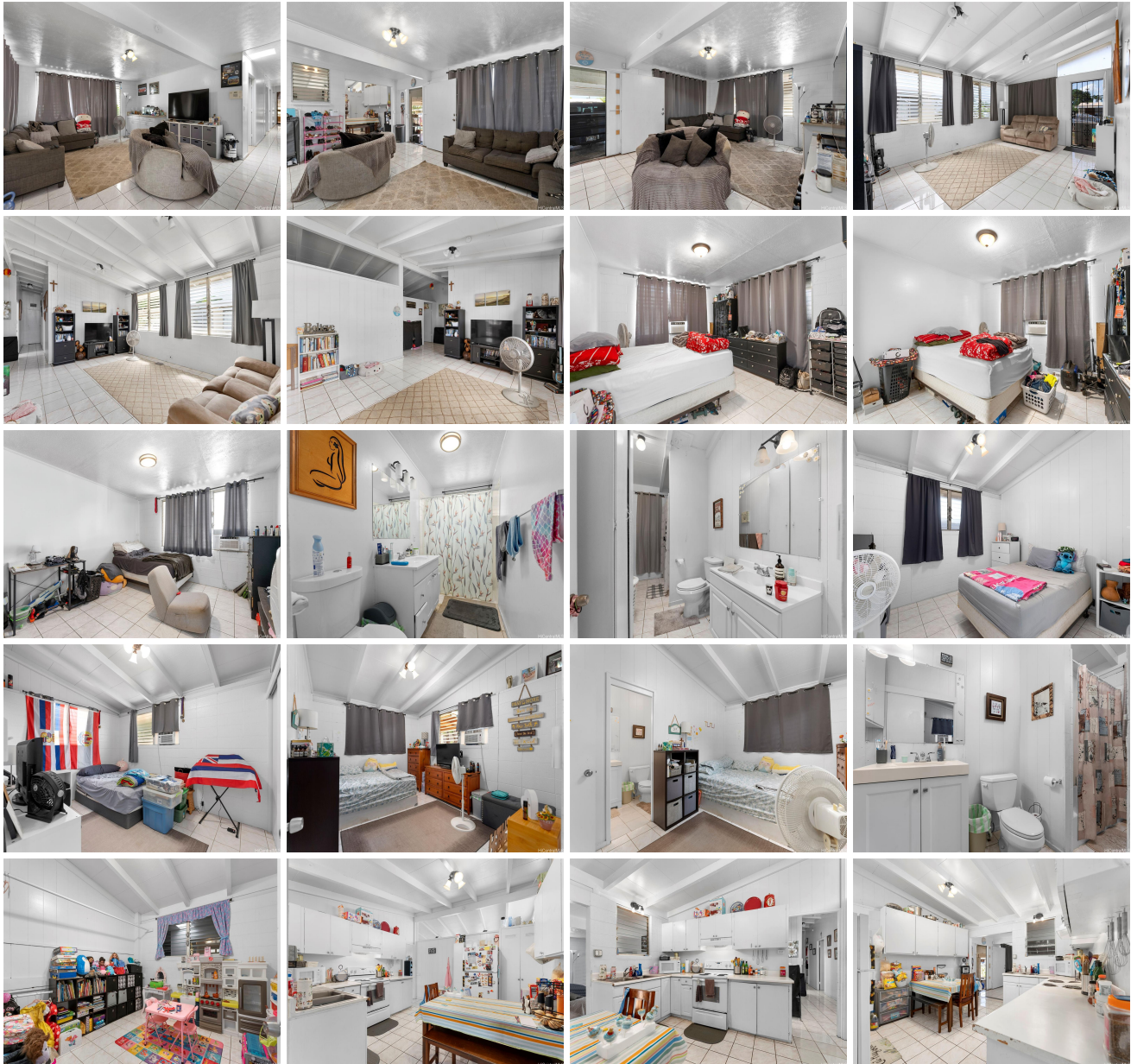
MLS#: **202415580, FS**
Status: **Active**
List Date & DOM: **07-11-2024 & 2**
Condition: **Average**
Frontage:
Tax/Year: **\$284/2024**
Neighborhood: **Waipahu Triangle**
Flood Zone: **Zone D - Tool**
Frontage:

Year Built: **1968**
Remodeled:
Total Parking: **2**
Assessed Value
Building: **\$217,700**
Land: **\$787,500**
Total: **\$1,005,200**
Stories / CPR: **One / No**

Zoning: **05 - R-5 Residential District**

View: **None**

Public Remarks: Looking for a spacious (2,070 interior sq ft) SINGLE LEVEL multi-generational home with a 2-car carport and ample street parking? This unique property features two separate living spaces: one side offers a 2bd/1ba with a wet bar, while the other side includes a 3bd/2ba with a full kitchen and a bonus room, currently used as a playroom. Enjoy TWO spacious and separate living areas on each side of the home. Home also features open beams with higher ceilings making it feel even more spacious inside. Situated on a quiet street within the Waipahu Triangle neighborhood with no outlet on one end of the street for additional privacy. This home was previously used as an in-home care facility and represents a rare and unbeatable value, move-in ready, with immense potential on a highly usable 6,000 sq ft lot. Please note, the home occupied, please do not disturb the occupants. Just minutes from the H-1 on and off-ramp, shopping, restaurants, and more. **Sale Conditions:** None **Schools:** , , * [Request Showing](#), [Photos](#), [History](#), [Maps](#), [Deed](#), [Watch List](#), [Tax Info](#)





Address	Price	Bd & Bth	Living / Avg.	Land Avg.	Lanai	Occ.	FL	DOM
94-1508 Waipahu Street	\$960,000	5 & 3/0	2,070 \$464	6,000 \$160	0	0%	0	2

Address	Tax Maint. Ass.	Assessed Land	Assessed Building	Assessed Total	Ratio	Year & Remodeled
94-1508 Waipahu Street	\$284 \$0 \$0	\$787,500	\$217,700	\$1,005,200	96%	1968 & NA

[94-1508 Waipahu Street](#) - MLS#: [202415580](#) - Looking for a spacious (2,070 interior sq ft) SINGLE LEVEL multi-generational home with a 2-car carport and ample street parking? This unique property features two separate living spaces: one side offers a 2bd/1ba with a wet bar, while the other side includes a 3bd/2ba with a full kitchen and a bonus room, currently used as a playroom. Enjoy TWO spacious and separate living areas on each side of the home. Home also features open beams with higher ceilings making it feel even more spacious inside. Situated on a quiet street within the Waipahu Triangle neighborhood with no outlet on one end of the street for additional privacy. This home was previously used as an in-home care facility and represents a rare and unbeatable value, move-in ready, with immense potential on a highly usable 6,000 sq ft lot. Please note, the home occupied, please do not disturb the occupants. Just minutes from the H-1 on and off-ramp, shopping, restaurants, and more. **Region:** Waipahu **Neighborhood:** Waipahu Triangle **Condition:** Average **Parking:** 2 Car **Total Parking:** 2 **View:** None **Frontage:** **Pool:** None **Zoning:** 05 - R-5 Residential District **Sale Conditions:** None **Schools:** , , * [Request Showing](#), [Photos](#), [History](#), [Maps](#), [Deed](#), [Watch List](#), [Tax Info](#)

DOM = Days on Market, Occ. = Occupancy, FL = Floor Number