

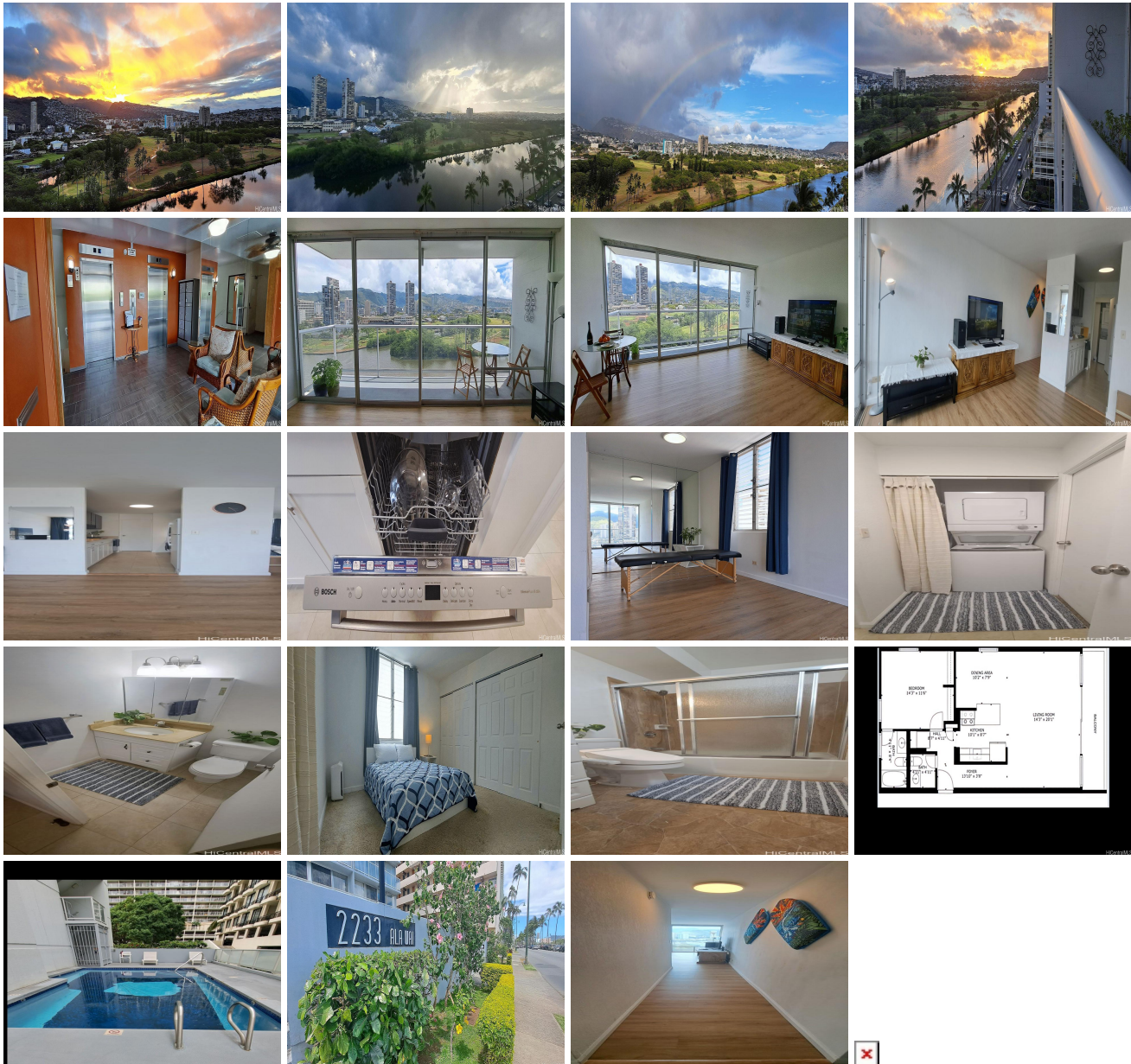
2233 Ala Wai 2233 Ala Wai Boulevard Unit 11C, Honolulu 96815 * 2233 Ala Wai * \$510,500

Beds: 1	MLS#: 202415597, FS	Year Built: 1973
Bath: 1/1	Status: Active	Remodeled: 2024
Living Sq. Ft.: 805	List Date & DOM: 07-07-2024 & 6	Total Parking: 1
Land Sq. Ft.: 14,157	Condition: Excellent	Assessed Value
Lanai Sq. Ft.: 60	Frontage:	Building: \$492,600
Sq. Ft. Other: 0	Tax/Year: \$90/2023	Land: \$89,500
Total Sq. Ft. 865	Neighborhood: Waikiki	Total: \$582,100
Maint./Assoc. \$0 / \$1,035	Flood Zone : Zone AO - Tool	Stories / CPR: / No
Parking: Guest, Open - 1	Frontage:	

Zoning: X2 - Apartment Precinct

View: **Diamond Head, Golf Course, Marina/Canal, Mountain, Sunrise**

Public Remarks: Great opportunity for a high-quality home in an awesome location with attractive pricing. Enjoy the lanai with stunning unobstructed views of the Koolau mountains and the Ala Wai Canal. - 1 bedroom but it feels like 2 - Half bathroom convenient for visitors and ensures a private primary bathroom/shower - Large sq footage - Spacious den off the living room that could be a 2nd bedroom or office - Ingenious floor plan allows flow through ventilation - New paint throughout the unit - No popcorn ceiling - New luxury plank flooring - New stack washer/dryer in the unit - Comes with one assigned parking stall - 4 guest parking stalls - New Bosch dishwasher - Modern lighting fixtures - Secured storage in the parking garage area - Resident Manager - Building entry by fobs - Privacy. Only 3 units per floor - Pet friendly building - Unit C bedrooms are further from the busy traffic on Seaside Avenue than the mirror image Unit A bedrooms. Therefore your bedroom is quieter. - Central Waikiki easy walking to shopping, dining, The Bus and beach. -Building is in top condition with recent spalling, elevator and repiping updates. Buyer to do own due diligence. **Sale Conditions:** None **Schools:** [Jefferson](#), [Washington](#), [Kaimuki](#) * [Request Showing](#), [Photos](#), [History](#), [Maps](#), [Deed](#), [Watch List](#), [Tax Info](#)



Address	Price	Bd & Bth	Living / Avg.	Land Avg.	Lanai	Occ.	FL	DOM
2233 Ala Wai Boulevard 11C	\$510,500	1 & 1/1	805 \$634	14,157 \$36	60	43%	19	6

Address	Tax Maint. Ass.	Assessed Land	Assessed Building	Assessed Total	Ratio	Year & Remodeled
2233 Ala Wai Boulevard 11C	\$90 \$0 \$1,035	\$89,500	\$492,600	\$582,100	88%	1973 & 2024

[2233 Ala Wai Boulevard 11C](#) - MLS#: [202415597](#) - Great opportunity for a high-quality home in an awesome location with attractive pricing. Enjoy the lanai with stunning unobstructed views of the Koolau mountains and the Ala Wai Canal. - 1 bedroom but it feels like 2 - Half bathroom convenient for visitors and ensures a private primary bathroom/shower - Large sq footage - Spacious den off the living room that could be a 2nd bedroom or office - Ingenious floor plan allows flow through ventilation - New paint throughout the unit - No popcorn ceiling - New luxury plank flooring - New stack washer/dryer in the unit - Comes with one assigned parking stall - 4 guest parking stalls - New Bosch dishwasher - Modern lighting fixtures - Secured storage in the parking garage area - Resident Manager - Building entry by fobs - Privacy. Only 3 units per floor - Pet friendly building - Unit C bedrooms are further from the busy traffic on Seaside Avenue than the mirror image Unit A bedrooms. Therefore your bedroom is quieter. - Central Waikiki easy walking to shopping, dining, The Bus and beach. - Building is in top condition with recent spalling, elevator and repiping updates. Buyer to do own due diligence. **Region:** Metro **Neighborhood:** Waikiki **Condition:** Excellent **Parking:** Guest, Open - 1 **Total Parking:** 1 **View:** Diamond Head, Golf Course, Marina/Canal, Mountain, Sunrise **Frontage:** **Pool:** **Zoning:** X2 - Apartment Precinct **Sale Conditions:** None **Schools:** [Jefferson](#), [Washington](#), [Kaimuki](#) * [Request Showing](#), [Photos](#), [History](#), [Maps](#), [Deed](#), [Watch List](#), [Tax Info](#)

DOM = Days on Market, Occ. = Occupancy, FL = Floor Number