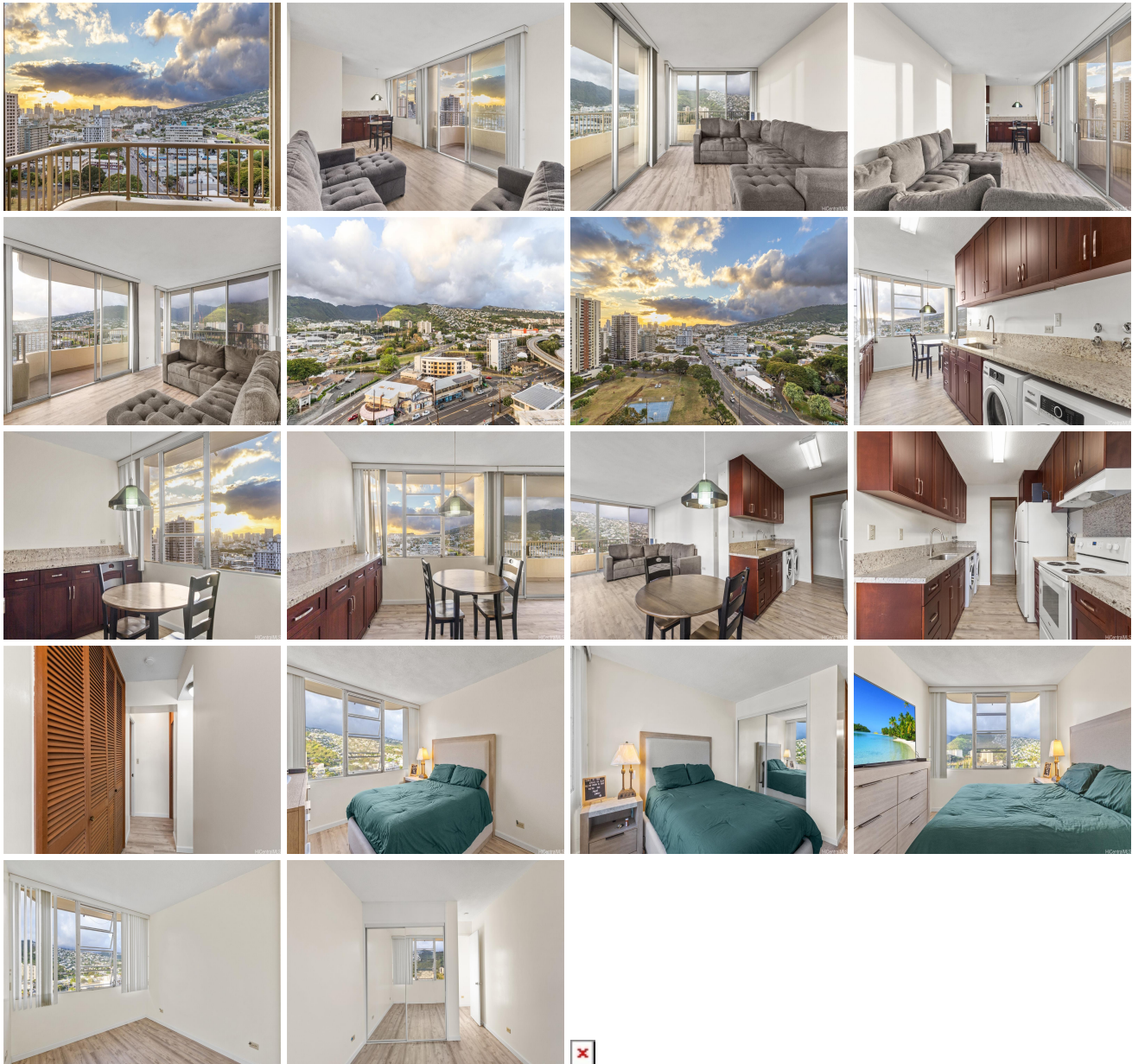


Contessa 2825 S King Street Unit 1604, Honolulu 96826 * Contessa * \$622,000

Beds: 2	MLS#: 202415680, FS	Year Built: 1971
Bath: 2/0	Status: Active	Remodeled:
Living Sq. Ft.: 1,007	List Date & DOM: 07-08-2024 & 5	Total Parking: 1
Land Sq. Ft.: 88,645	Condition: Excellent, Above Average	Assessed Value
Lanai Sq. Ft.: 0	Frontage:	Building: \$438,200
Sq. Ft. Other: 0	Tax/Year: \$152/2023	Land: \$115,200
Total Sq. Ft. 1,007	Neighborhood: Moiliili	Total: \$553,400
Maint./Assoc. \$1,046 / \$0	Flood Zone : Zone X - Tool	Stories / CPR: One / No
Parking: Guest, Open - 1	Frontage:	
Zoning : 12 - A-2 Medium Density Apartme	View: Mountain, Ocean, Sunset	

Public Remarks: Welcome to your dream home in the neighborhood of Moiliili, walking distance from the UH Manoa and 15 minutes to Waikiki Beach. This stunning 2-bedroom, 2-bathroom condo offers 1,007 sqft of living space and an expansive wrap-around lanai, perfect for soaking in mountain and ocean views from Downtown Honolulu to the Diamond Head side of the island. Enjoy the convenience of a dedicated parking stall right in front of the building entrance, safety with onsite security and a resident manager, and a sauna and playground for an active lifestyle. Offering you the best of island living as you are centrally located in Honolulu surrounded by shopping centers, dining options, schools and easy access to the freeway for convenience. Marvel at spectacular sunsets from the comfort of your dining and living areas of your home knowing that you are only one of four units on the 16th floor of the Contessa. **Sale Conditions:** None **Schools:** , , * [Request Showing](#), [Photos](#), [History](#), [Maps](#), [Deed](#), [Watch List](#), [Tax Info](#)



Address	Price	Bd & Bth	Living / Avg.	Land Avg.	Lanai	Occ.	FL	DOM
2825 S King Street 1604	\$622,000	2 & 2/0	1,007 \$618	88,645 \$7	0	65%	16	5

Address	Tax Maint. Ass.	Assessed Land	Assessed Building	Assessed Total	Ratio	Year & Remodeled
2825 S King Street 1604	\$152 \$1,046 \$0	\$115,200	\$438,200	\$553,400	112%	1971 & NA

[2825 S King Street 1604](#) - MLS#: [202415680](#) - Welcome to your dream home in the neighborhood of Moiliili, walking distance from the UH Manoa and 15 minutes to Waikiki Beach. This stunning 2-bedroom, 2-bathroom condo offers 1,007 sqft of living space and an expansive wrap-around lanai, perfect for soaking in mountain and ocean views from Downtown Honolulu to the Diamond Head side of the island. Enjoy the convenience of a dedicated parking stall right in front of the building entrance, safety with onsite security and a resident manager, and a sauna and playground for an active lifestyle. Offering you the best of island living as you are centrally located in Honolulu surrounded by shopping centers, dining options, schools and easy access to the freeway for convenience. Marvel at spectacular sunsets from the comfort of your dining and living areas of your home knowing that you are only one of four units on the 16th floor of the Contessa. **Region:** Metro **Neighborhood:** Moiliili **Condition:** Excellent, Above Average **Parking:** Guest, Open - 1 **Total Parking:** 1 **View:** Mountain, Ocean, Sunset **Frontage:** **Pool:** **Zoning:** 12 - A-2 Medium Density Apartme **Sale Conditions:** None **Schools:** , , * [Request Showing, Photos, History, Maps, Deed, Watch List, Tax Info](#)

DOM = Days on Market, Occ. = Occupancy, FL = Floor Number