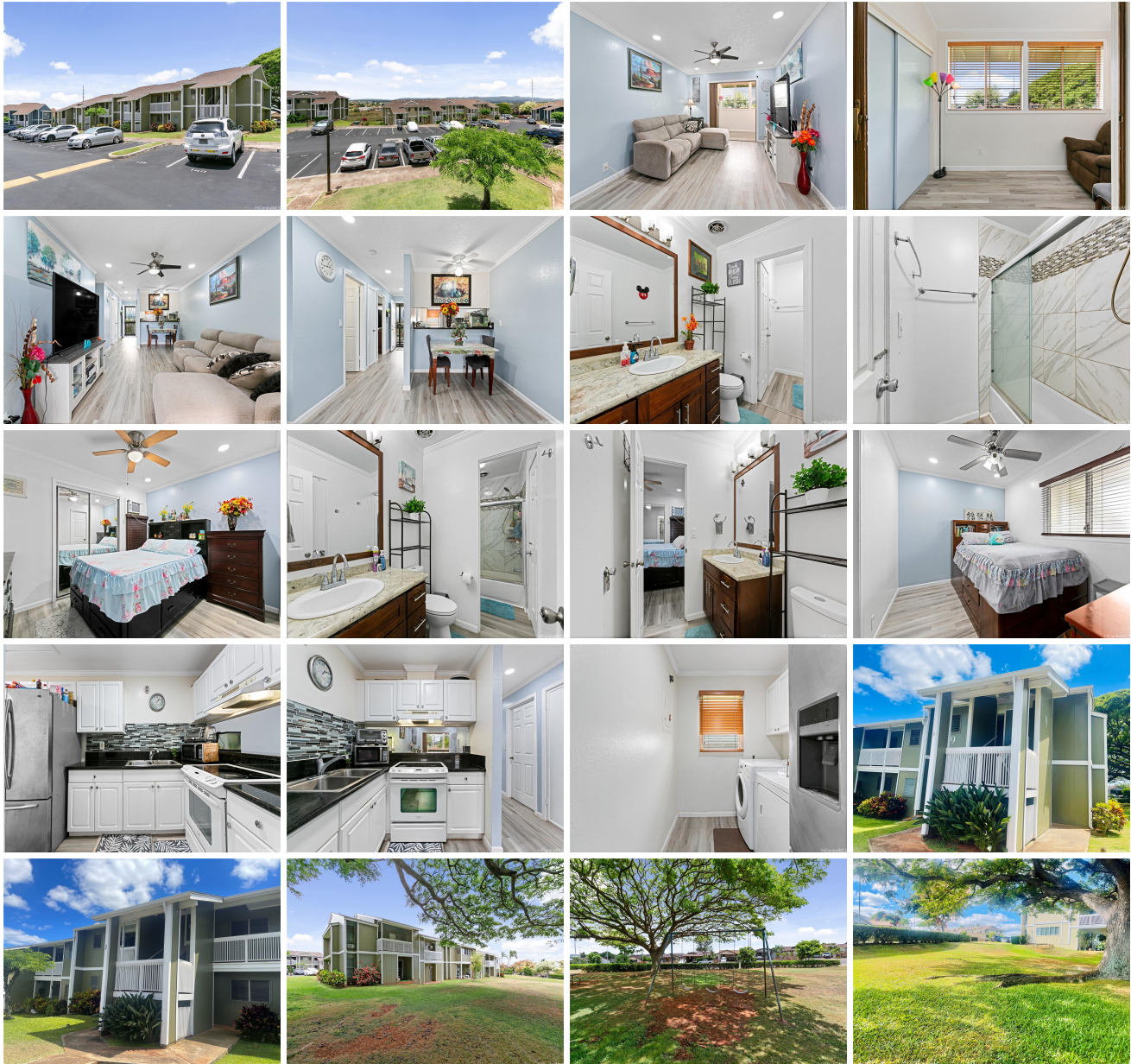


Parkview Village Condo 94-615 Kahakea Street Unit 9D, Waipahu 96797 * \$499,000

Beds: 2	MLS#: 202415707, FS	Year Built: 1981
Bath: 1/1	Status: Active	Remodeled:
Living Sq. Ft.: 875	List Date & DOM: 07-15-2024 &	Total Parking: 1
Land Sq. Ft.: 917,199	Condition: Excellent	Assessed Value
Lanai Sq. Ft.: 0	Frontage: Other	Building: \$237,200
Sq. Ft. Other: 0	Tax/Year: \$96/2024	Land: \$212,800
Total Sq. Ft. 875	Neighborhood: Village Park	Total: \$450,000
Maint./Assoc. \$383 / \$13	Flood Zone : Zone D - Tool	Stories / CPR: Two / No
Parking: Open - 1, Street	Frontage: Other	
Zoning : 11 - A-1 Low Density Apartment	View: Other	

Public Remarks: Welcome home to this charming 2-bedroom condo in the heart of Village Park! Step inside and discover a cozy living space with upgraded lighting and freshly painted interiors. The enclosed lanai provides additional living space for relaxation. Nestled in a fantastic location, this turn-key gem offers both style and accessibility. Imagine waking up to lush green scenery and the soothing sounds of nature. The building enjoys a level topography, and at the back of the unit, you'll find a spacious open ground area complete with swings and park tables—a perfect spot for parties or children to play. Street parking is abundant on a first-come, first-served basis, ensuring convenience for residents and guests. And don't forget the easy access to shopping, restaurants, banks in Kunia, and the H-1 freeway. This meticulously maintained complex truly offers the best of both worlds: tranquility and convenience. Make it your home sweet home! **Sale Conditions:** None **Schools:** [Kaleiopuu](#), [Waipahu](#), [Waipahu](#) * [Request Showing](#), [Photos](#), [History](#), [Maps](#), [Deed](#), [Watch List](#), [Tax Info](#)





Address	Price	Bd & Bth	Living / Avg.	Land Avg.	DOM
94-615 Kahakea Street 9D	\$499,000	2 & 1/1	875 \$570	917,199 \$1	0

Address	Tax Maint. Ass.	Assessed Land	Assessed Building	Assessed Total	Ratio	Year & Remodeled
94-615 Kahakea Street 9D	\$96 \$383 \$13	\$212,800	\$237,200	\$450,000	111%	1981 & NA

[94-615 Kahakea Street 9D](#) - MLS#: [202415707](#) - Welcome home to this charming 2-bedroom condo in the heart of Village Park! Step inside and discover a cozy living space with upgraded lighting and freshly painted interiors. The enclosed lanai provides additional living space for relaxation. Nestled in a fantastic location, this turn-key gem offers both style and accessibility. Imagine waking up to lush green scenery and the soothing sounds of nature. The building enjoys a level topography, and at the back of the unit, you'll find a spacious open ground area complete with swings and park tables—a perfect spot for parties or children to play. Street parking is abundant on a first-come, first-served basis, ensuring convenience for residents and guests. And don't forget the easy access to shopping, restaurants, banks in Kunia, and the H-1 freeway. This meticulously maintained complex truly offers the best of both worlds: tranquility and convenience. Make it your home sweet home! **Region:** Waipahu **Neighborhood:** Village Park **Condition:** Excellent **Parking:** Open - 1, Street **Total Parking:** 1 **View:** Other **Frontage:** Other **Pool:** **Zoning:** 11 - A-1 Low Density Apartment **Sale Conditions:** None **Schools:** [Kaleiopuu](#), [Waipahu](#), [Waipahu](#) * [Request Showing](#), [Photos](#), [History](#), [Maps](#), [Deed](#), [Watch List](#), [Tax Info](#)

DOM = Days on Market