

Pulewa at Mehana 1167 Kakala Street Unit 1204, Kapolei 96707 * \$580,000

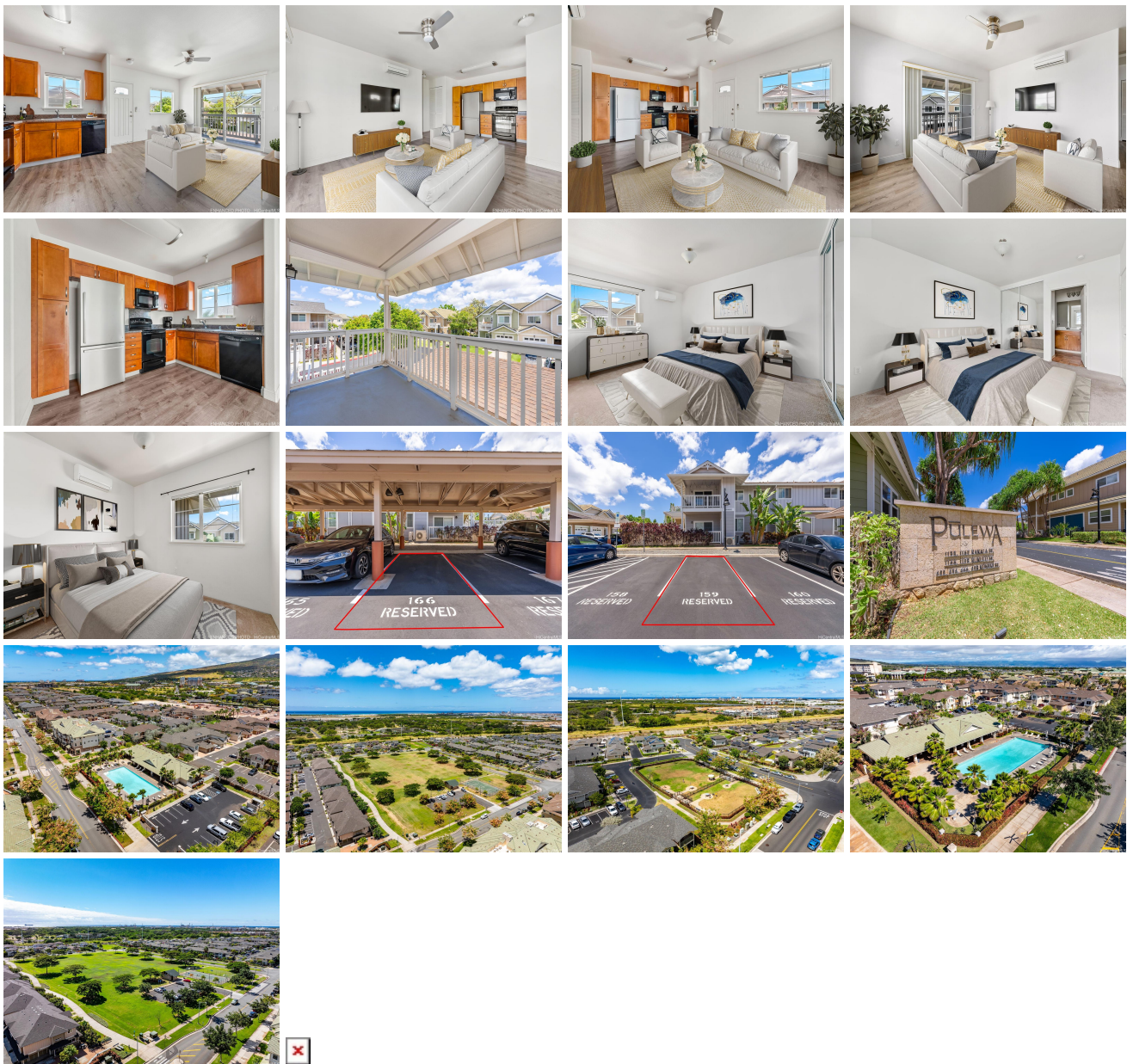
Beds: 2	MLS#: 202415711, FS	Year Built: 2011
Bath: 2/0	Status: Active	Remodeled:
Living Sq. Ft.: 734	List Date & DOM: 07-10-2024 & 6	Total Parking: 2
Land Sq. Ft.: 0	Condition: Excellent	Assessed Value
Lanai Sq. Ft.: 0	Frontage:	Building: \$441,200
Sq. Ft. Other: 0	Tax/Year: \$153/2024	Land: \$136,800
Total Sq. Ft. 734	Neighborhood: Kapolei-mehana-pulewa	Total: \$578,000
Maint./Assoc. \$305 / \$59	Flood Zone : Zone D - Tool	Stories / CPR: / No
Parking: Assigned, Covered - 1, Guest, Open - 1	Frontage:	

Zoning: 11 - A-1 Low Density Apartment

View: None

Public Remarks: A unique 2nd story corner town home built in 2012 in excellent condition. This 2 bedroom, 2 bathroom, one covered, and one uncovered parking stall is located in the heart of Kapolei, and is near Kapolei Shopping Center, Foodland, Costco etc. Also within close proximity to the Mehana community amenities such as, Pool, Dog Park, Rec Center, Basketball Court, Soccer Field, Childrens Playground and Bike park. Unit includes vinyl floors to the hallway, kitchen, and living room. This property also has split AC, in every room, and a brand new washer/dryer. A few photos have been virtually staged(enhanced).

Sale Conditions: None **Schools:** [Ho'okele](#), [Kapolei](#), [Kapolei](#) * [Request Showing](#), [Photos](#), [History](#), [Maps](#), [Deed](#), [Watch List](#), [Tax Info](#)



Address	Price	Bd & Bth	Living / Avg.	Land Avg.	DOM
1167 Kakala Street 1204	\$580,000	2 & 2/0	734 \$790	0 \$inf	6

Address	Tax Maint. Ass.	Assessed Land	Assessed Building	Assessed Total	Ratio	Year & Remodeled
1167 Kakala Street 1204	\$153 \$305 \$59	\$136,800	\$441,200	\$578,000	100%	2011 & NA

[1167 Kakala Street 1204](#) - MLS#: [202415711](#) - A unique 2nd story corner town home built in 2012 in excellent condition. This 2 bedroom, 2 bathroom, one covered, and one uncovered parking stall is located in the heart of Kapolei, and is near Kapolei Shopping Center, Foodland, Costco etc. Also within close proximity to the Mehana community amenities such as, Pool, Dog Park, Rec Center, Basketball Court, Soccer Field, Childrens Playground and Bike park. Unit includes vinyl floors to the hallway, kitchen, and living room. This property also has split AC, in every room, and a brand new washer/dryer. A few photos have been virtually staged(enhanced). **Region:** Ewa Plain **Neighborhood:** Kapolei-mehana-pulewa **Condition:** Excellent **Parking:** Assigned, Covered - 1, Guest, Open - 1 **Total Parking:** 2 **View:** None **Frontage:** **Pool:** **Zoning:** 11 - A-1 Low Density Apartment **Sale Conditions:** None **Schools:** [Ho'okele](#), [Kapolei](#), [Kapolei](#) * [Request Showing](#), [Photos](#), [History](#), [Maps](#), [Deed](#), [Watch List](#), [Tax Info](#)

DOM = Days on Market