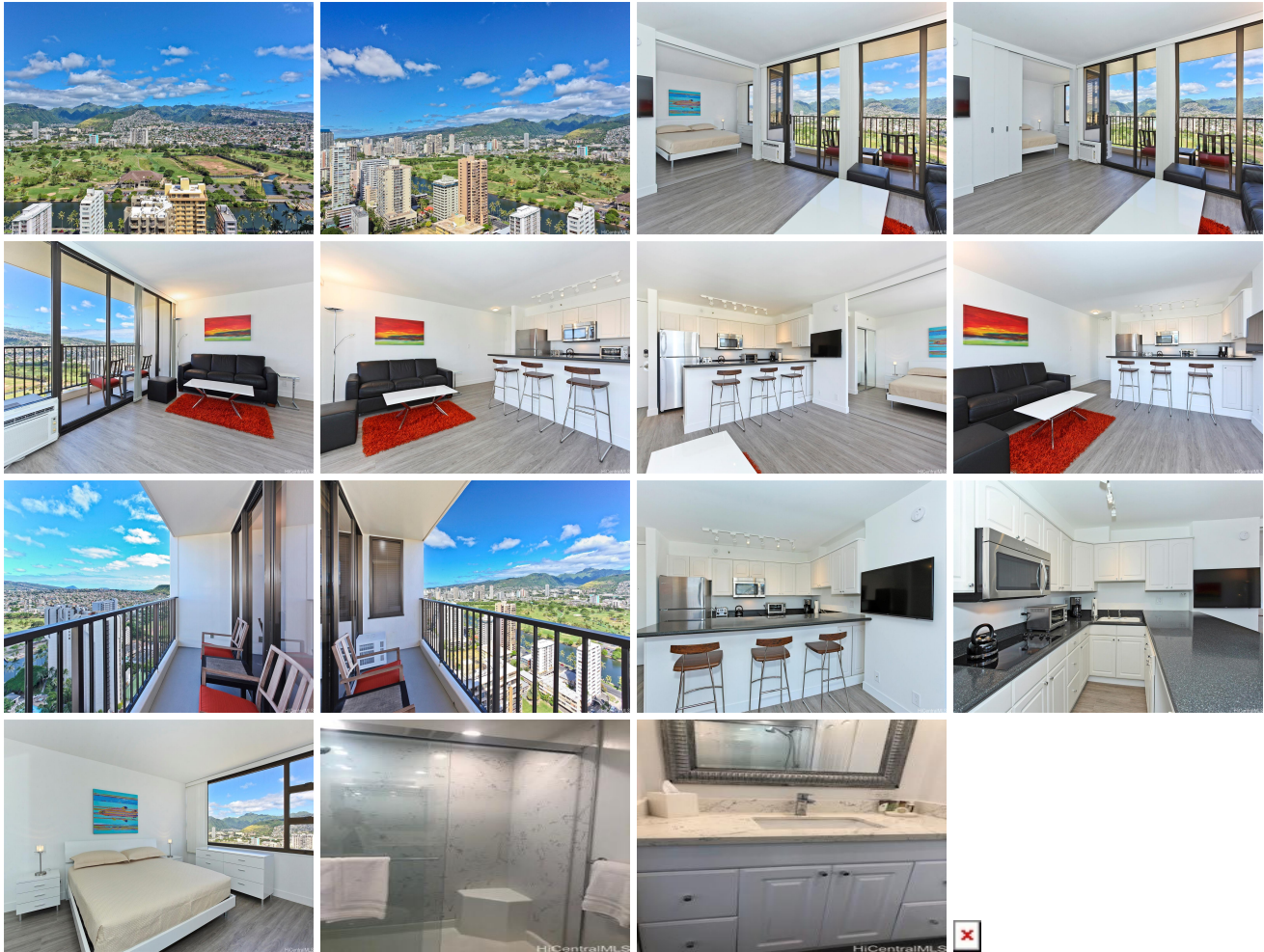


Waikiki Banyan 201 Ohua Avenue Unit 3205, Honolulu 96815 * \$849,000

Beds: 1	MLS#: 202415761, FS	Year Built: 1977
Bath: 1/0	Status: Active	Remodeled:
Living Sq. Ft.: 557	List Date & DOM: 07-09-2024 & 7	Total Parking: 1
Land Sq. Ft.: 0	Condition: Excellent	Assessed Value
Lanai Sq. Ft.: 67	Frontage: Stream/Canal	Building: \$598,600
Sq. Ft. Other: 0	Tax/Year: \$258/2024	Land: \$112,500
Total Sq. Ft. 624	Neighborhood: Waikiki	Total: \$711,100
Maint./Assoc. \$722 / \$0	Flood Zone : Zone AE - Tool	Stories / CPR: 21+ / No
Parking: Covered - 1, Unassigned	Frontage: Stream/Canal	
Zoning : X2 - Apartment Precinct	View: Marina/Canal, Mountain	

Public Remarks: High floor unit in excellent condition with wonderful mountain views. Kitchen and bathroom was up-graded a few years ago. Newly painted a month ago. Furniture by inspiration includes Queen size sofa bed to give more sleeping room for a family. Capt. Cook has handled rentals for many years and has maintained the unit well. (No Becker Lease) **Sale Conditions:** None **Schools:** , , * [Request Showing](#), [Photos](#), [History](#), [Maps](#), [Deed](#), [Watch List](#), [Tax Info](#)



Address	Price	Bd & Bth	Living / Avg.	Land Avg.	DOM
201 Ohua Avenue 3205	\$849,000	1 & 1/0	557 \$1,524	0 \$inf	7

Address	Tax Maint. Ass.	Assessed Land	Assessed Building	Assessed Total	Ratio	Year & Remodeled
201 Ohua Avenue 3205	\$258 \$722 \$0	\$112,500	\$598,600	\$711,100	119%	1977 & NA

[201 Ohua Avenue 3205](#) - MLS#: [202415761](#) - High floor unit in excellent condition with wonderful mountain views. Kitchen and bathroom was up-graded a few years ago. Newly painted a month ago. Furniture by inspiration includes Queen size sofa bed to give more sleeping room for a family. Capt. Cook has handled rentals for many years and has maintained the unit well. (No Becker Lease) **Region:** Metro **Neighborhood:** Waikiki **Condition:** Excellent **Parking:** Covered - 1, Unassigned **Total Parking:** 1 **View:** Marina/Canal, Mountain **Frontage:** Stream/Canal **Pool:** **Zoning:** X2 - Apartment Precinct **Sale Conditions:** None **Schools:** , , * [Request Showing](#), [Photos](#), [History](#), [Maps](#), [Deed](#), [Watch List](#), [Tax Info](#)

DOM = Days on Market