

Nahele at Hoopili 91-3641 IWIKUAMOO Street Unit 2203, Ewa Beach 96706 * Nahele at

Hoopili * \$533,765

Beds: **2**
 Bath: **2/0**
 Living Sq. Ft.: **867**
 Land Sq. Ft.: **0**
 Lanai Sq. Ft.: **0**
 Sq. Ft. Other: **0**
 Total Sq. Ft. **867**
 Maint./Assoc. **\$346 / \$78**

MLS#: **202415770, FS**
 Status: **Active**
 List Date & DOM: **07-09-2024 & 7**
 Condition: **Excellent**
 Frontage: **Other**
 Tax/Year: **\$0/0**
 Neighborhood: **Hoopili-nahele**
 Flood Zone: **Zone D - Tool**

Year Built: **2024**
 Remodeled:
 Total Parking: **1**
[Assessed Value](#)
 Building: **\$0**
 Land: **\$0**
 Total: **\$0**
 Stories / CPR: **4-7 / No**

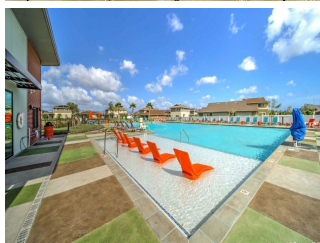
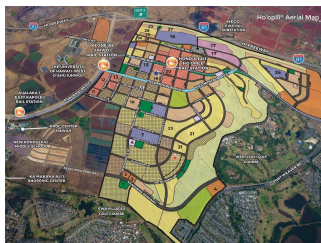
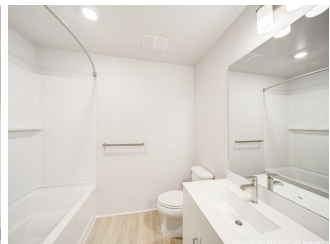
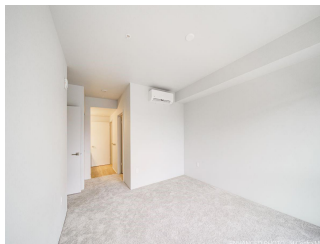
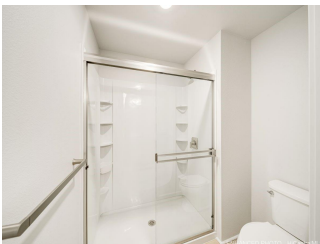
Parking: **Assigned, Open - 1**

Frontage: **Other**

Zoning: **17 - AMX-2 Medium Density Apt M**

View: **Other**

Public Remarks: MOVE IN READY! This single-level 2 bedroom, 2-bath condominium with 867 square feet (net) allows for comfortable living. This floor plan offers an open-concept living room. From the living room, step out to the covered lanai to relax and take in the fresh air. The main bedroom has a walk-in closet and ensuite bathroom with a double vanity and shower. The second bedroom has a generously sized closet with mirrored wardrobe doors and the second bathroom features a full-size bathtub. Air conditioning and modern appliances including a range/oven, micro-hood, dishwasher, refrigerator, and washer/dryer allow for ease of living. Home Is Connected® - Smart Home system+ and includes energy efficient features*. Community complete with a pool, parks, a dog park, and more! **Sale Conditions:** None **Schools:** [Ewa](#), [Honouliuli](#), [Kapolei](#) * [Request Showing](#), [Photos](#), [History](#), [Maps](#), [Deed](#), [Watch List](#), [Tax Info](#)





Address	Price	Bd & Bth	Living / Avg.	Land Avg.	Lanai	Occ.	FL	DOM
91-3641 IWIKUAMOO Street 2203	\$533,765	2 & 2/0	867 \$616	0 \$inf	0	84%	2	7

Address	Tax Maint. Ass.	Assessed Land	Assessed Building	Assessed Total	Ratio	Year & Remodeled
91-3641 IWIKUAMOO Street 2203	\$0 \$346 \$78	\$0	\$0	\$0	inf%	2024 & NA

[91-3641 IWIKUAMOO Street 2203](#) - MLS#: [202415770](#) - MOVE IN READY! This single-level 2 bedroom, 2-bath condominium with 867 square feet (net) allows for comfortable living. This floor plan offers an open-concept living room. From the living room, step out to the covered lanai to relax and take in the fresh air. The main bedroom has a walk-in closet and ensuite bathroom with a double vanity and shower. The second bedroom has a generously sized closet with mirrored wardrobe doors and the second bathroom features a full-size bathtub. Air conditioning and modern appliances including a range/oven, micro-hood, dishwasher, refrigerator, and washer/dryer allow for ease of living. Home Is Connected® - Smart Home system+ and includes energy efficient features*. Community complete with a pool, parks, a dog park, and more! **Region:** Ewa Plain **Neighborhood:** Hoopili-nahele **Condition:** Excellent **Parking:** Assigned, Open - 1 **Total Parking:** 1 **View:** Other **Frontage:** Other **Pool:** Zoning: 17 - AMX-2 Medium Density Apt M **Sale Conditions:** None **Schools:** [Ewa](#), [Honouliuli](#), [Kapolei](#) * [Request Showing](#), [Photos](#), [History](#), [Maps](#), [Deed](#), [Watch List](#), [Tax Info](#)

DOM = Days on Market, Occ. = Occupancy, FL = Floor Number