

1717 Ala Wai 1717 Ala Wai Boulevard Unit 2010, Honolulu 96815 * 1717 Ala Wai *

\$750,000

Beds: **3**
Bath: **2/0**
Living Sq. Ft.: **1,130**
Land Sq. Ft.: **62,073**
Lanai Sq. Ft.: **100**
Sq. Ft. Other: **0**
Total Sq. Ft. **1,230**
Maint./Assoc. **\$1,223 / \$0**
Parking: **Assigned, Covered - 1**

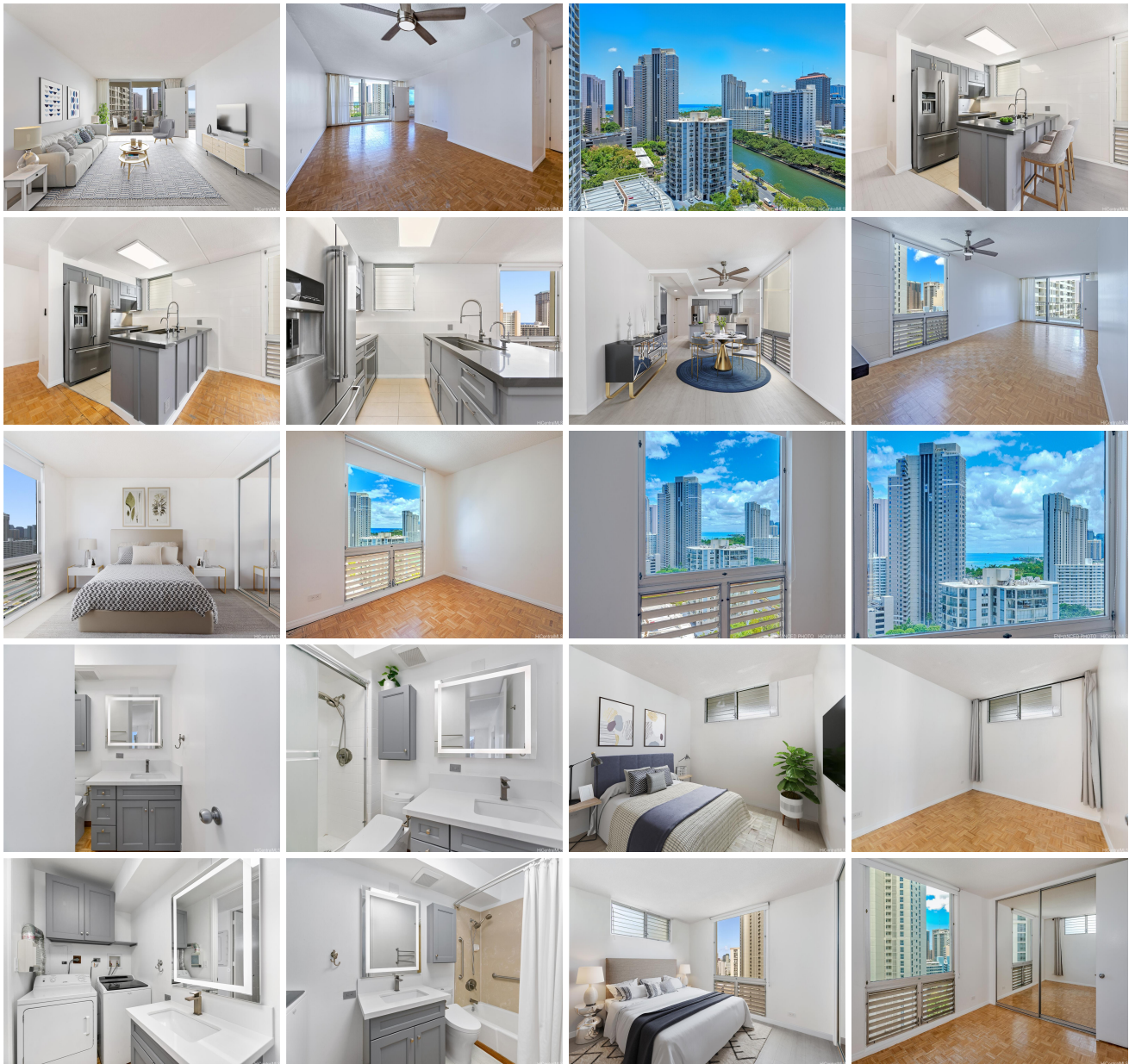
MLS#: **202415842, FS**
Status: **Active**
List Date & DOM: **07-16-2024 & 1**
Condition: **Excellent**
Frontage:
Tax/Year: **\$143/2024**
Neighborhood: **Waikiki**
Flood Zone: Zone AO - Tool

Year Built: **1970**
Remodeled: **2022**
Total Parking: **1**
[Assessed Value](#)
Building: **\$554,800**
Land: **\$84,900**
Total: **\$639,700**
Stories / CPR: **21+ / No**

Zoning: X2 - Apartment Precinct

Frontage:
View: **City, Marina/Canal, Mountain, Ocean, Sunset**

Public Remarks: Corner end unit, 3 bed, 2 bath, ocean views, high floor, large Lanai. Great location in Waikiki, close to Ala Moana Mall, Ala Moana Beach Park and Waikiki Beach. Restaurants, shops and public transportation close by. Amenities include heated saltwater pool, whirlpool, recreation deck, BBQ and fitness center. Partially remodeled condo. Some photos are virtually staged or enhanced. **Sale Conditions:** None **Schools:** [Jefferson](#), [Washington](#), [Kaimuki](#) * [Request Showing](#), [Photos](#), [History](#), [Maps](#), [Deed](#), [Watch List](#), [Tax Info](#)





Address	Price	Bd & Bth	Living / Avg.	Land Avg.	Lanai	Occ.	FL	DOM
1717 Ala Wai Boulevard 2010	\$750,000	3 & 2/0	1,130 \$664	62,073 \$12	100	55%	20	1

Address	Tax Maint. Ass.	Assessed Land	Assessed Building	Assessed Total	Ratio	Year & Remodeled
1717 Ala Wai Boulevard 2010	\$143 \$1,223 \$0	\$84,900	\$554,800	\$639,700	117%	1970 & 2022

[1717 Ala Wai Boulevard 2010](#) - MLS#: [202415842](#) - Corner end unit, 3 bed, 2 bath, ocean views, high floor, large Lanai. Great location in Waikiki, close to Ala Moana Mall, Ala Moana Beach Park and Waikiki Beach. Restaurants, shops and public transportation close by. Amenities include heated saltwater pool, whirlpool, recreation deck, BBQ and fitness center. Partially remodeled condo. Some photos are virtually staged or enhanced. **Region:** Metro **Neighborhood:** Waikiki **Condition:** Excellent **Parking:** Assigned, Covered - 1 **Total Parking:** 1 **View:** City, Marina/Canal, Mountain, Ocean, Sunset **Frontage:** **Pool:** **Zoning:** X2 - Apartment Precinct **Sale Conditions:** None **Schools:** [Jefferson](#), [Washington](#), [Kaimuki](#) * [Request Showing](#), [Photos](#), [History](#), [Maps](#), [Deed](#), [Watch List](#), [Tax Info](#)

DOM = Days on Market, Occ. = Occupancy, FL = Floor Number