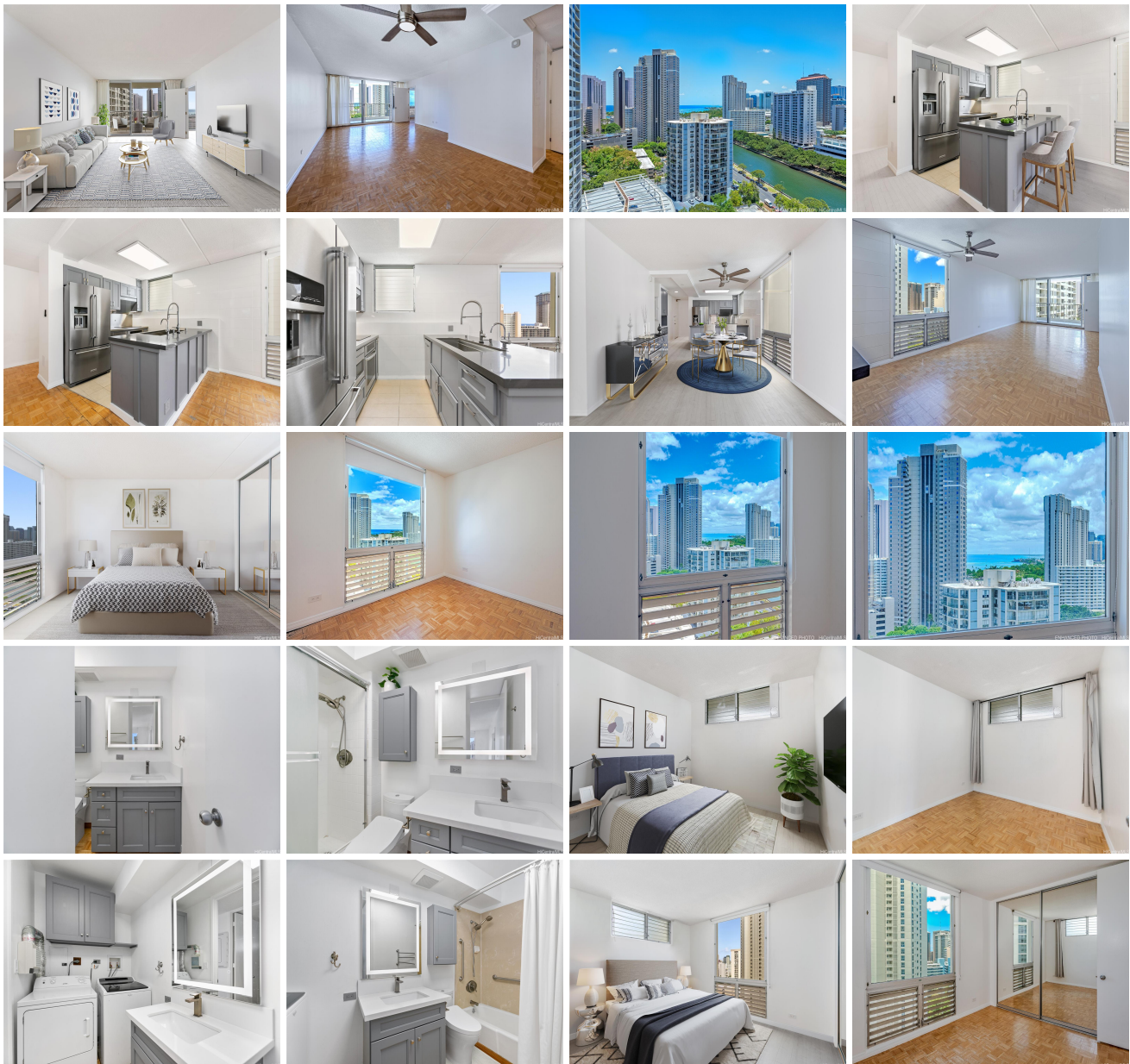


1717 Ala Wai 1717 Ala Wai Boulevard Unit 2010, Honolulu 96815 * \$750,000

Beds: 3	MLS#: 202415842, FS	Year Built: 1970
Bath: 2/0	Status: Active	Remodeled: 2022
Living Sq. Ft.: 1,130	List Date & DOM: 07-16-2024 & 1	Total Parking: 1
Land Sq. Ft.: 62,073	Condition: Excellent	Assessed Value
Lanai Sq. Ft.: 100	Frontage:	Building: \$554,800
Sq. Ft. Other: 0	Tax/Year: \$143/2024	Land: \$84,900
Total Sq. Ft. 1,230	Neighborhood: Waikiki	Total: \$639,700
Maint./Assoc. \$1,223 / \$0	Flood Zone : Zone AO - Tool	Stories / CPR: 21+ / No
Parking: Assigned, Covered - 1	Frontage:	
Zoning : X2 - Apartment Precinct	View: City, Marina/Canal, Mountain, Ocean, Sunset	

Public Remarks: Corner end unit, 3 bed, 2 bath, ocean views, high floor, large Lanai. Great location in Waikiki, close to Ala Moana Mall, Ala Moana Beach Park and Waikiki Beach. Restaurants, shops and public transportation close by. Amenities include heated saltwater pool, whirlpool, recreation deck, BBQ and fitness center. Partially remodeled condo. Some photos are virtually staged or enhanced. **Sale Conditions:** None **Schools:** [Jefferson](#), [Washington](#), [Kaimuki](#) * [Request Showing](#), [Photos](#), [History](#), [Maps](#), [Deed](#), [Watch List](#), [Tax Info](#)





Address	Price	Bd & Bth	Living / Avg.	Land Avg.	DOM
1717 Ala Wai Boulevard 2010	\$750,000	3 & 2/0	1,130 \$664	62,073 \$12	1

Address	Tax Maint. Ass.	Assessed Land	Assessed Building	Assessed Total	Ratio	Year & Remodeled
1717 Ala Wai Boulevard 2010	\$143 \$1,223 \$0	\$84,900	\$554,800	\$639,700	117%	1970 & 2022

[1717 Ala Wai Boulevard 2010](#) - MLS#: [202415842](#) - Corner end unit, 3 bed, 2 bath, ocean views, high floor, large Lanai. Great location in Waikiki, close to Ala Moana Mall, Ala Moana Beach Park and Waikiki Beach. Restaurants, shops and public transportation close by. Amenities include heated saltwater pool, whirlpool, recreation deck, BBQ and fitness center. Partially remodeled condo. Some photos are virtually staged or enhanced. **Region:** Metro **Neighborhood:** Waikiki **Condition:** Excellent **Parking:** Assigned, Covered - 1 **Total Parking:** 1 **View:** City, Marina/Canal, Mountain, Ocean, Sunset **Frontage:** **Pool:** **Zoning:** X2 - Apartment Precinct **Sale Conditions:** None **Schools:** [Jefferson](#), [Washington](#), [Kaimuki](#) * [Request Showing](#), [Photos](#), [History](#), [Maps](#), [Deed](#), [Watch List](#), [Tax Info](#)

DOM = Days on Market