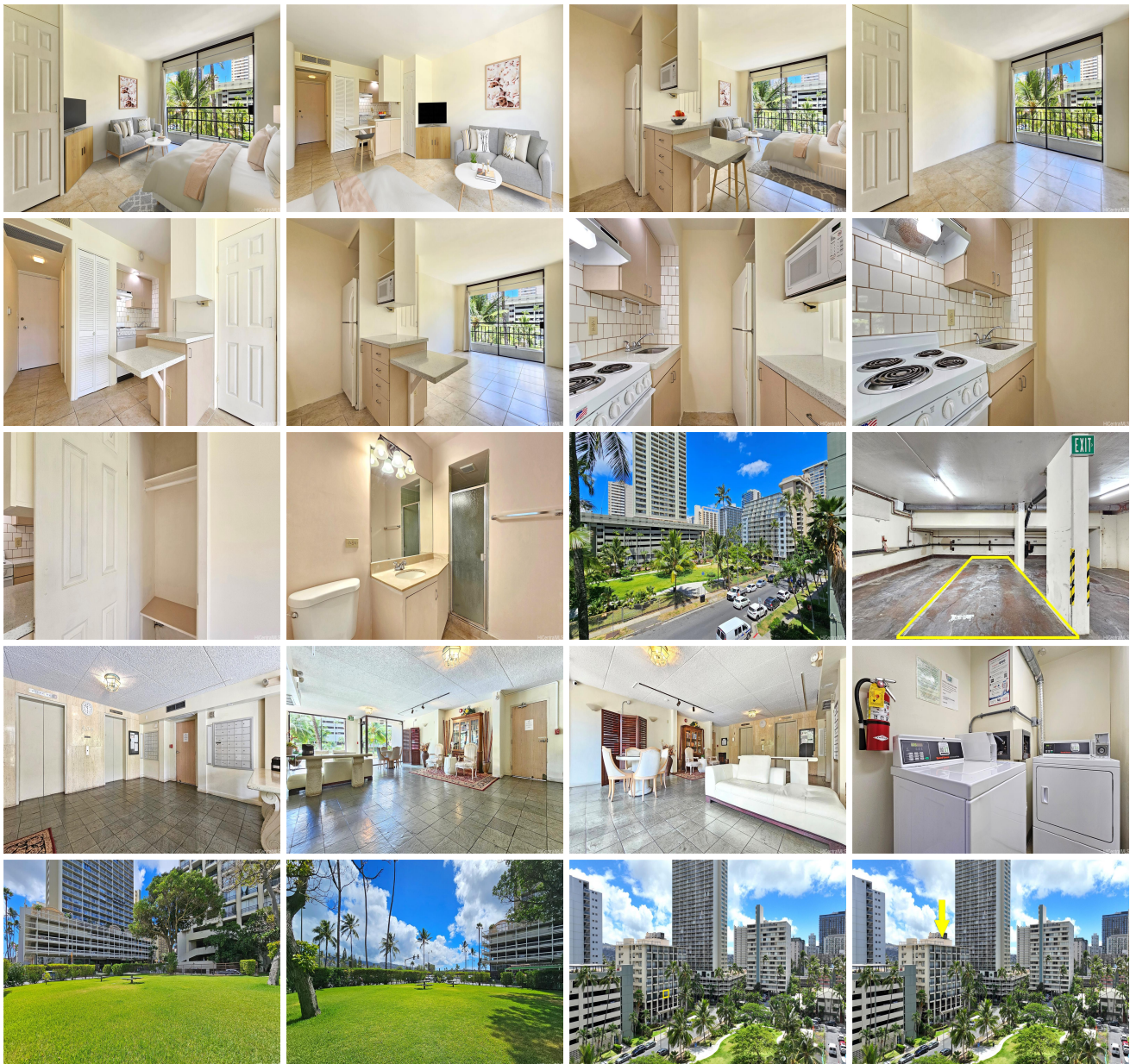
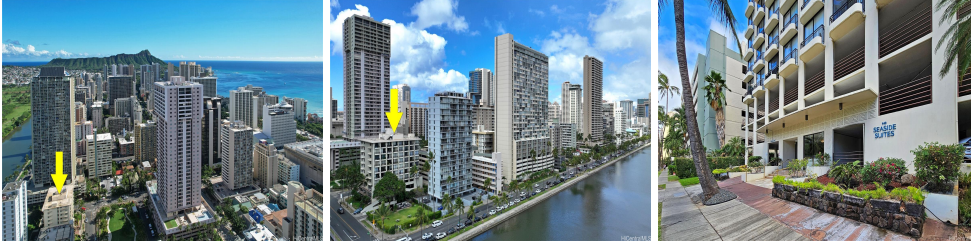


Seaside Suites 440 Seaside Avenue Unit 308, Honolulu 96815 * \$330,000

| | | |
|---------------------------------------------------------|----------------------------------------------------|---------------------------------|
| Beds: 0 | MLS#: 202415853, FS | Year Built: 1980 |
| Bath: 1/0 | Status: Active | Remodeled: 2024 |
| Living Sq. Ft.: 309 | List Date & DOM: 07-11-2024 & 6 | Total Parking: 1 |
| Land Sq. Ft.: 23,435 | Condition: Excellent, Above Average | Assessed Value |
| Lanai Sq. Ft.: 0 | Frontage: | Building: \$206,800 |
| Sq. Ft. Other: 0 | Tax/Year: \$69/2023 | Land: \$74,400 |
| Total Sq. Ft. 309 | Neighborhood: Waikiki | Total: \$281,200 |
| Maint./Assoc. \$499 / \$0 | Flood Zone : Zone AO - Tool | Stories / CPR: 8-14 / No |
| Parking: Covered - 1 | Frontage: | |
| Zoning : X2 - Apartment Precinct | View: Garden | |

Public Remarks: Discover the perfect blend of tranquility and convenience with this charming studio located in a quiet boutique building in the heart of Waikiki. Enjoy the serene beauty of lush garden views right from your window and just a short distance to Waikiki's world-famous beaches, shopping, dining, and entertainment. This studio is ideal for those seeking a peaceful retreat with the benefits of urban living. Don't miss out on this unique opportunity! **Sale Conditions:** None
Schools: , , * [Request Showing](#), [Photos](#), [History](#), [Maps](#), [Deed](#), [Watch List](#), [Tax Info](#)





| Address | Price | Bd & Bth | Living / Avg. | Land Avg. | DOM |
|----------------------------------------|---------------------------|----------|---------------|---------------|-----|
| 440 Seaside Avenue 308 | \$330,000 | 0 & 1/0 | 309 \$1,068 | 23,435 \$14 | 6 |

| Address | Tax Maint. Ass. | Assessed Land | Assessed Building | Assessed Total | Ratio | Year & Remodeled |
|----------------------------------------|---------------------|---------------|-------------------|----------------|-------|------------------|
| 440 Seaside Avenue 308 | \$69 \$499 \$0 | \$74,400 | \$206,800 | \$281,200 | 117% | 1980 & 2024 |

[440 Seaside Avenue 308](#) - MLS#: [202415853](#) - Discover the perfect blend of tranquility and convenience with this charming studio located in a quiet boutique building in the heart of Waikiki. Enjoy the serene beauty of lush garden views right from your window and just a short distance to Waikiki's world-famous beaches, shopping, dining, and entertainment. This studio is ideal for those seeking a peaceful retreat with the benefits of urban living. Don't miss out on this unique opportunity!

Region: Metro **Neighborhood:** Waikiki **Condition:** Excellent, Above Average **Parking:** Covered - 1 **Total Parking:** 1
View: Garden **Frontage:** **Pool:** **Zoning:** X2 - Apartment Precinct **Sale Conditions:** None **Schools:** , , * [Request Showing](#),
[Photos](#), [History](#), [Maps](#), [Deed](#), [Watch List](#), [Tax Info](#)

DOM = Days on Market