

**Esplanade 500 Lunalilo Home Road Unit 26D, Honolulu 96825 \* Esplanade \* \$1,250,000**

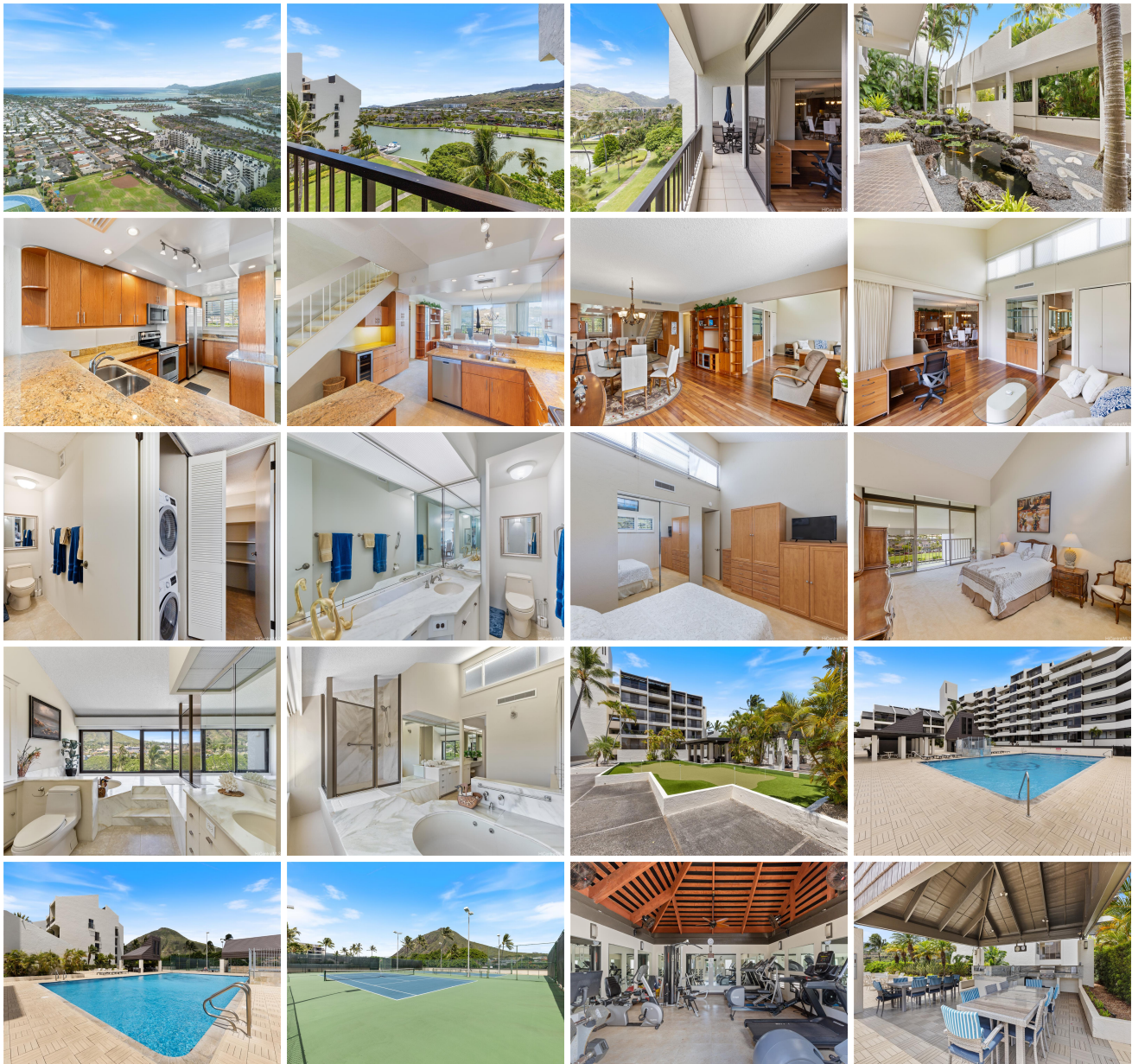
Beds: <b>3</b>	MLS#: <b>202415865, FS</b>	Year Built: <b>1973</b>
Bath: <b>3/0</b>	Status: <b>Active</b>	Remodeled:
Living Sq. Ft.: <b>1,657</b>	List Date & DOM: <b>07-15-2024 &amp;</b>	Total Parking: <b>3</b>
Land Sq. Ft.: <b>205,821</b>	Condition: <b>Above Average</b>	<a href="#">Assessed Value</a>
Lanai Sq. Ft.: <b>175</b>	Frontage: <b>Marina, Waterfront</b>	Building: <b>\$674,900</b>
Sq. Ft. Other: <b>0</b>	Tax/Year: <b>\$260/2024</b>	Land: <b>\$377,900</b>
Total Sq. Ft. <b>1,832</b>	Neighborhood: <b>West Marina</b>	Total: <b>\$1,052,800</b>
Maint./Assoc. <b>\$1,991 / \$0</b>	<a href="#">Flood Zone</a> : <b>Zone D - Tool</b>	Stories / CPR: <b>8-14 / No</b>
<b>Assigned, Covered - 2, Garage,</b>		
Parking: <b>Guest, Open - 1, Secured Entry, Street</b>		Frontage: <b>Marina, Waterfront</b>

[Zoning](#): **12 - A-2 Medium Density Apartme**

View: **Coastline, Diamond Head, Garden, Marina/Canal, Mountain, Sunset**

**Public Remarks:** The iconic Esplanade offers life in a resort-style setting with enough amenities to cater to every interest and keep you busy all day...The complex is situated on the water in beautiful Hawaii Kai and will welcome you, your boat, and your pets. This lovely two-story unit offers an upgraded kitchen/bar area, 2 bathrooms on the main floor, a flexible floor plan to suit your needs, a lanai with a Diamond head view, and a large primary suite on the entire second floor. Three parking stalls come with the unit. The seller offers to include furnishings in the price. Other upgrades include Australian koa hardwood flooring downstairs, mirrored wall, and meticulous upkeep including a new a/c system in 2016. **Sale Conditions:** None

**Schools:** [Koko Head](#), [Niu Valley](#), [Kaiser](#) \* [Request Showing](#), [Photos](#), [History](#), [Maps](#), [Deed](#), [Watch List](#), [Tax Info](#)





Address	Price	Bd & Bth	Living / Avg.	Land   Avg.	Lanai	Occ.	FL	DOM
<a href="#">500 Lunalilo Home Road 26D</a>	<a href="#">\$1,250,000</a>	3 & 3/0	1,657   \$754	205,821   \$6	175	70%	6	0

Address	Tax   Maint.   Ass.	Assessed Land	Assessed Building	Assessed Total	Ratio	Year & Remodeled
<a href="#">500 Lunalilo Home Road 26D</a>	\$260   \$1,991   \$0	\$377,900	\$674,900	\$1,052,800	119%	1973 & NA

[500 Lunalilo Home Road 26D](#) - MLS#: [202415865](#) - The iconic Esplanade offers life in a resort-style setting with enough amenities to cater to every interest and keep you busy all day...The complex is situated on the water in beautiful Hawaii Kai and will welcome you, your boat, and your pets. This lovely two-story unit offers an upgraded kitchen/bar area, 2 bathrooms on the main floor, a flexible floor plan to suit your needs, a lanai with a Diamond head view, and a large primary suite on the entire second floor. Three parking stalls come with the unit. The seller offers to include furnishings in the price. Other upgrades include Australian koa hardwood flooring downstairs, mirrored wall, and meticulous upkeep including a new a/c system in 2016. **Region:** Hawaii Kai **Neighborhood:** West Marina **Condition:** Above Average **Parking:** Assigned, Covered - 2, Garage, Guest, Open - 1, Secured Entry, Street **Total Parking:** 3 **View:** Coastline, Diamond Head, Garden, Marina/Canal, Mountain, Sunset **Frontage:** Marina, Waterfront **Pool:** **Zoning:** 12 - A-2 Medium Density Apartme **Sale Conditions:** None **Schools:** [Koko Head](#), [Niu Valley](#), [Kaiser](#) \* [Request Showing](#), [Photos](#), [History](#), [Maps](#), [Deed](#), [Watch List](#), [Tax Info](#)

DOM = Days on Market, Occ. = Occupancy, FL = Floor Number