

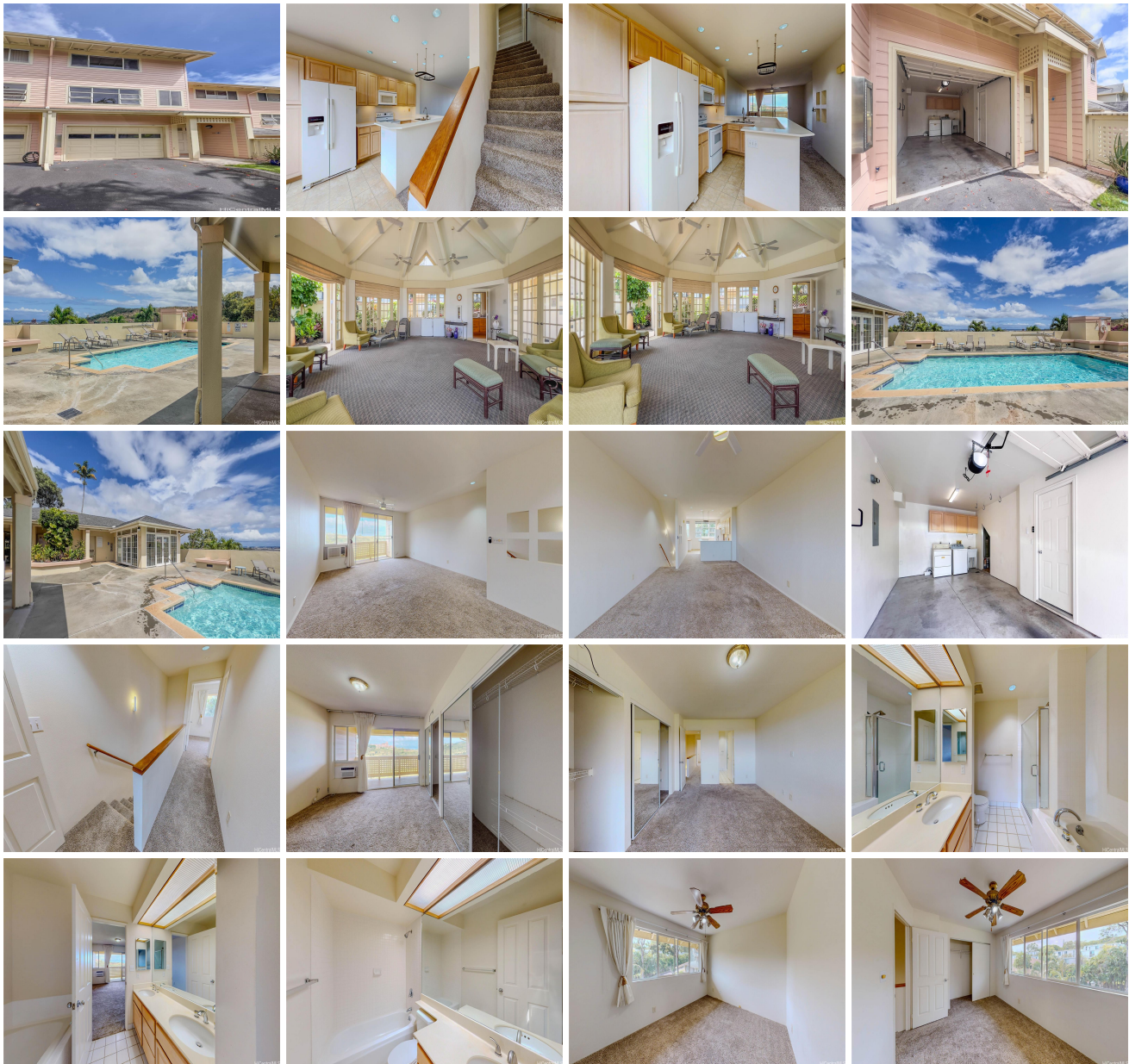
Moanalua Village 1355 Moanalualani Place Unit 9D, Honolulu 96819 * \$839,000

Beds: 2	MLS#: 202415897, FS	Year Built: 1992
Bath: 2/0	Status: Active	Remodeled:
Living Sq. Ft.: 1,520	List Date & DOM: 07-12-2024 & 3	Total Parking: 2
Land Sq. Ft.: 432,943	Condition: Excellent	Assessed Value
Lanai Sq. Ft.: 152	Frontage:	Building: \$631,200
Sq. Ft. Other: 0	Tax/Year: \$229/2024	Land: \$190,700
Total Sq. Ft. 1,672	Neighborhood: Moanalua Valley	Total: \$821,900
Maint./Assoc. \$858 / \$0	Flood Zone : Zone D - Tool	Stories / CPR: Three / No
Parking: Assigned, Covered - 1, Open - 1, Tandem	Frontage:	

[Zoning](#): **12 - A-2 Medium Density Apartme**

View: **City, Golf Course, Mountain, Ocean, Sunrise**

Public Remarks: Rarely available, Luxurious- executive fee simple townhome in a private and gated community. This spacious and immaculate unit has a large modern kitchen that opens into the dining/living room and is perfect for entertaining. Two large lanais offer panoramic mountain, ocean, and golf course views. One Covered parking and another one outside. Amenities include guest parking, pool, jacuzzi, fitness center and clubhouse. Pets are allowed. **Sale Conditions:** None **Schools:** [Moanalua](#), [Moanalua](#), [Moanalua](#) * [Request Showing](#), [Photos](#), [History](#), [Maps](#), [Deed](#), [Watch List](#), [Tax Info](#)



Address	Price	Bd & Bth	Living / Avg.	Land Avg.	DOM
1355 Moanalualani Place 9D	\$839,000	2 & 2/0	1,520 \$552	432,943 \$2	3

Address	Tax Maint. Ass.	Assessed Land	Assessed Building	Assessed Total	Ratio	Year & Remodeled
1355 Moanalualani Place 9D	\$229 \$858 \$0	\$190,700	\$631,200	\$821,900	102%	1992 & NA

[1355 Moanalualani Place 9D](#) - MLS#: [202415897](#) - Rarely available, Luxurious- executive fee simple townhome in a private and gated community. This spacious and immaculate unit has a large modern kitchen that opens into the dining/living room and is perfect for entertaining. Two large lanais offer panoramic mountain, ocean, and golf course views. One Covered parking and another one outside. Amenities include guest parking, pool, jacuzzi, fitness center and clubhouse. Pets are allowed. **Region:** Metro **Neighborhood:** Moanalua Valley **Condition:** Excellent **Parking:** Assigned, Covered - 1, Open - 1, Tandem **Total Parking:** 2 **View:** City, Golf Course, Mountain, Ocean, Sunrise **Frontage:** **Pool:** **Zoning:** 12 - A-2 Medium Density Apartme **Sale Conditions:** None **Schools:** [Moanalua](#), [Moanalua](#), [Moanalua](#) * [Request Showing](#), [Photos](#), [History](#), [Maps](#), [Deed](#), [Watch List](#), [Tax Info](#)

DOM = Days on Market