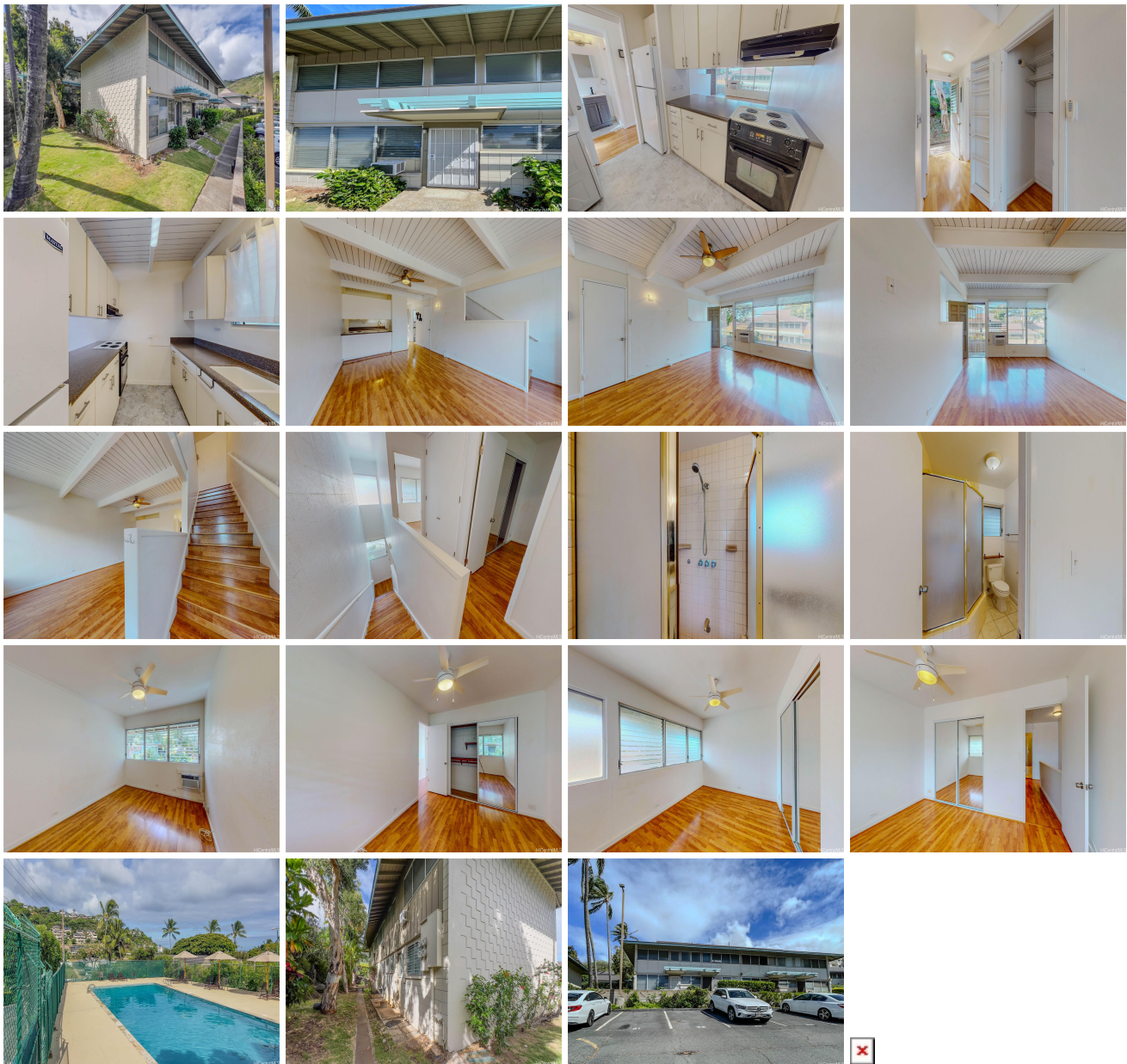


Waialae Gardens 1 Keanu Street Unit 71, Honolulu 96816 * Waialae Gardens * \$699,000

Beds: 2	MLS#: 202415901, FS	Year Built: 1966
Bath: 2/0	Status: Active	Remodeled: 2017
Living Sq. Ft.: 1,035	List Date & DOM: 07-12-2024 & 3	Total Parking: 2
Land Sq. Ft.: 445,009	Condition: Excellent	Assessed Value
Lanai Sq. Ft.: 0	Frontage:	Building: \$200,700
Sq. Ft. Other: 0	Tax/Year: \$188/2024	Land: \$461,200
Total Sq. Ft. 1,035	Neighborhood: Waialae Nui Vly	Total: \$661,900
Maint./Assoc. \$755 / \$0	Flood Zone : Zone X - Tool	Stories / CPR: Two / No
Parking: Assigned, Open - 2	Frontage:	
Zoning : 11 - A-1 Low Density Apartment	View: None	

Public Remarks: Rarely available 2 parking, townhome with 2 bed, 2 bath, plus a large attic for additional storage space. Located in Kahala, one of Oahu's most desired neighborhoods. Walking distance to Kahala Mall and Theaters, Kuono Marketplace, Whole Foods Market, and Starbucks. Conveniently located, and with easy access to freeways. The Associations maintains the yard areas and pool. Low maintenance fee. **Sale Conditions:** None **Schools:** [Wilson](#), [Kaimuki](#), [Kalani](#) * [Request Showing](#), [Photos](#), [History](#), [Maps](#), [Deed](#), [Watch List](#), [Tax Info](#)



Address	Price	Bd & Bth	Living / Avg.	Land Avg.	Lanai	Occ.	FL	DOM
1 Keanu Street 71	\$699,000	2 & 2/0	1,035 \$675	445,009 \$2	0	74%	2	3

Address	Tax Maint. Ass.	Assessed Land	Assessed Building	Assessed Total	Ratio	Year & Remodeled
1 Keanu Street 71	\$188 \$755 \$0	\$461,200	\$200,700	\$661,900	106%	1966 & 2017

[1 Keanu Street 71](#) - MLS#: [202415901](#) - Rarely available 2 parking, townhome with 2 bed, 2 bath, plus a large attic for additional storage space. Located in Kahala, one of Oahu's most desired neighborhoods. Walking distance to Kahala Mall and Theaters, Kuono Marketplace, Whole Foods Market, and Starbucks. Conveniently located, and with easy access to freeways. The Associations maintains the yard areas and pool. Low maintenance fee. **Region:** Diamond Head **Neighborhood:** Waialae Nui Vly **Condition:** Excellent **Parking:** Assigned, Open - 2 **Total Parking:** 2 **View:** None **Frontage:** **Pool:** **Zoning:** 11 - A-1 Low Density Apartment **Sale Conditions:** None **Schools:** [Wilson](#), [Kaimuki](#), [Kalani](#) * [Request Showing](#), [Photos](#), [History](#), [Maps](#), [Deed](#), [Watch List](#), [Tax Info](#)

DOM = Days on Market, Occ. = Occupancy, FL = Floor Number