

Windward Passage 322 Aoloa Street Unit 1305, Kailua 96734 * Windward Passage *

\$898,000

Beds: **2**
 Bath: **2/0**
 Living Sq. Ft.: **964**
 Land Sq. Ft.: **0**
 Lanai Sq. Ft.: **92**
 Sq. Ft. Other: **0**
 Total Sq. Ft. **1,056**
 Maint./Assoc. **\$839 / \$0**

MLS#: **202415942, FS**
 Status: **Active**
 List Date & DOM: **07-16-2024 &**
 Condition: **Excellent**
 Frontage: **Other**
 Tax/Year: **\$270/2023**
 Neighborhood: **Kailua Town**
 Flood Zone: **Zone X - Tool**

Year Built: **1979**
 Remodeled:
 Total Parking: **2**
[Assessed Value](#)
 Building: **\$738,000**
 Land: **\$104,400**
 Total: **\$842,400**
 Stories / CPR: **15-20 / No**

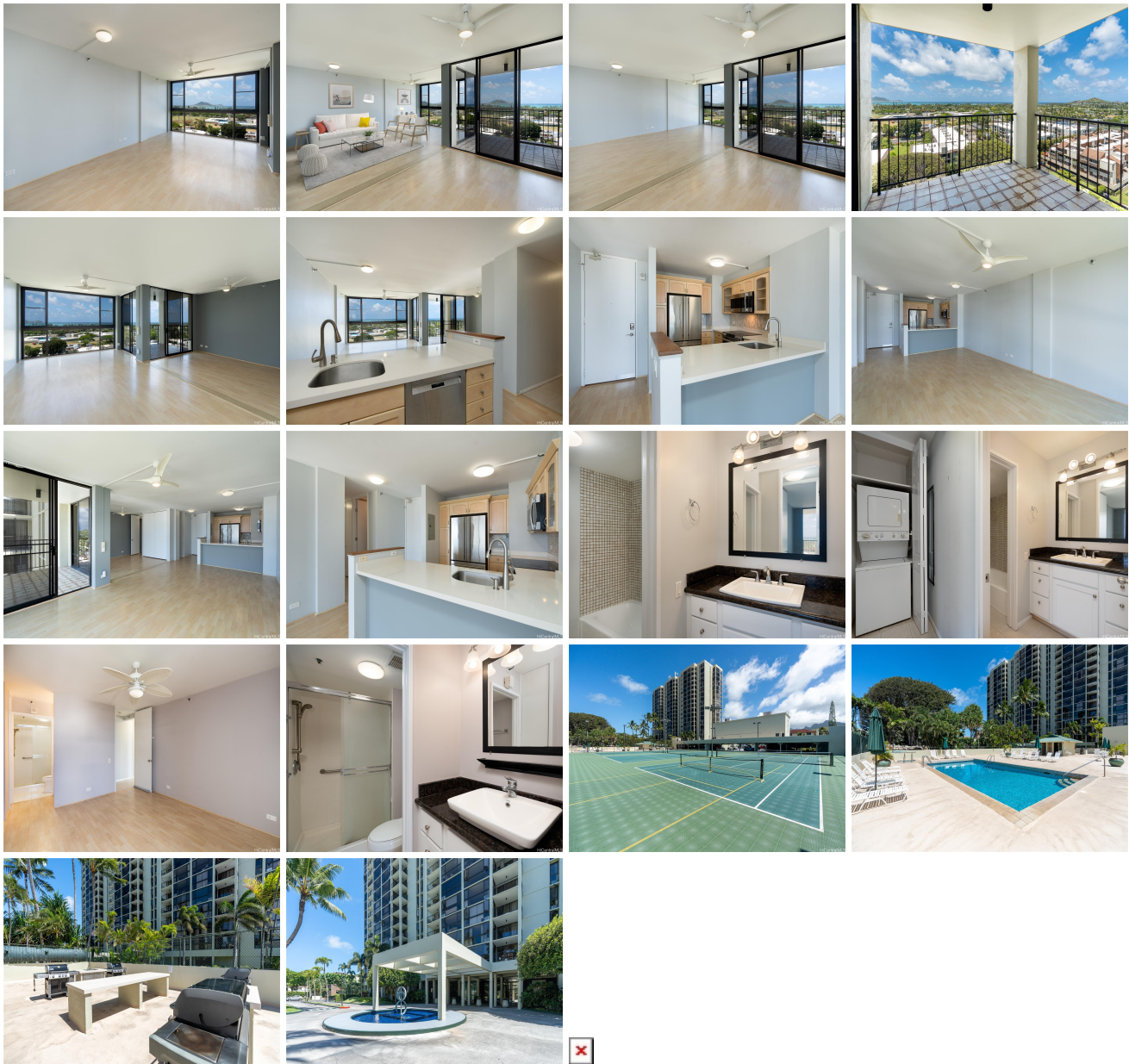
Parking: **Assigned, Covered - 1, Open - 1, Secured Entry**

Frontage: **Other**

Zoning: **12 - A-2 Medium Density Apartme**

View: **Coastline, Mountain, Ocean, Sunrise**

Public Remarks: Experience luxury in this 2-bedroom, 2-bathroom condominium on the 13th floor with sweeping views of the ocean and Kailua. Windward Passage merges a peaceful retreat with urban convenience. The unit features resort-like amenities such as a swimming pool, jacuzzi, tennis courts, fitness center, and landscaped gardens. Spend your days at the beach and discover the vibrant local community of Kailua. **Sale Conditions:** None **Schools:** [Kailua](#), [Kailua](#), [Kalaheo](#) * [Request Showing](#), [Photos](#), [History](#), [Maps](#), [Deed](#), [Watch List](#), [Tax Info](#)



Address	Price	Bd & Bth	Living / Avg.	Land Avg.	Lanai	Occ.	FL	DOM
322 Aoloa Street 1305	\$898,000	2 & 2/0	964 \$932	0 \$inf	92	54%	13	0

Address	Tax Maint. Ass.	Assessed Land	Assessed Building	Assessed Total	Ratio	Year & Remodeled
322 Aoloa Street 1305	\$270 \$839 \$0	\$104,400	\$738,000	\$842,400	107%	1979 & NA

[322 Aoloa Street 1305](#) - MLS#: [202415942](#) - Experience luxury in this 2-bedroom, 2-bathroom condominium on the 13th floor with sweeping views of the ocean and Kailua. Windward Passage merges a peaceful retreat with urban convenience. The unit features resort-like amenities such as a swimming pool, jacuzzi, tennis courts, fitness center, and landscaped gardens. Spend your days at the beach and discover the vibrant local community of Kailua. **Region:** Kailua **Neighborhood:** Kailua Town **Condition:** Excellent **Parking:** Assigned, Covered - 1, Open - 1, Secured Entry **Total Parking:** 2 **View:** Coastline, Mountain, Ocean, Sunrise **Frontage:** Other **Pool:** **Zoning:** 12 - A-2 Medium Density Apartme **Sale Conditions:** None **Schools:** [Kailua](#), [Kailua](#), [Kalaheo](#) * [Request Showing](#), [Photos](#), [History](#), [Maps](#), [Deed](#), [Watch List](#), [Tax Info](#)

DOM = Days on Market, Occ. = Occupancy, FL = Floor Number